



## Lime Grove, Cheadle, Stockport

Offers Over £360,000

2 1 1

- Charming Period Mid Terrace.
- First Class Location In Cheadle Village Conservation Area.
- Cellars with Potential To Develop Subject to Planning.
- Period Style Four Piece Bathroom Suite.
- Period Features Throughout.
- Exceptional Presentation Throughout.
- Wonderful Extended Open Plan Living Space.
- Larger than Average First Floor Accommodation.
- Well Laid Out Village Garden & Permit Off Road Parking.
- Tenure - Freehold / EPC - / Council Band - C

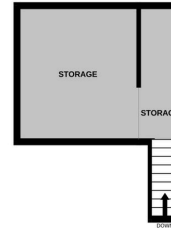


This attractive extended two-bedroom period terrace is situated in the heart of the sought-after Cheadle Village Conservation Area and offers over 1,000 sq ft of accommodation. The property features a spacious open-plan living and dining area, an extended kitchen with quality fittings, integrated appliances, and patio doors to the rear garden, as well as useful cellar storage with conversion potential, subject to consent. Upstairs are two generous bedrooms and a stylish four-piece family bathroom with a roll-top bath and walk-in shower. Externally, there is a charming private rear garden with a patio area, a front garden, and two allocated off-road parking spaces.

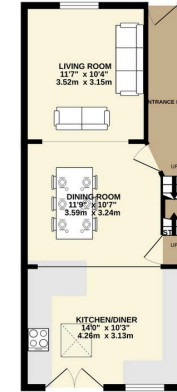




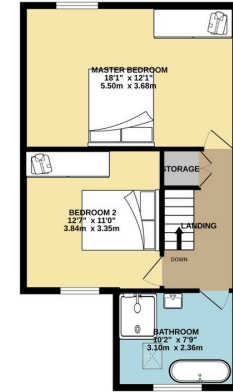
BASEMENT  
179 sq ft. (16.6 sq m.) approx.



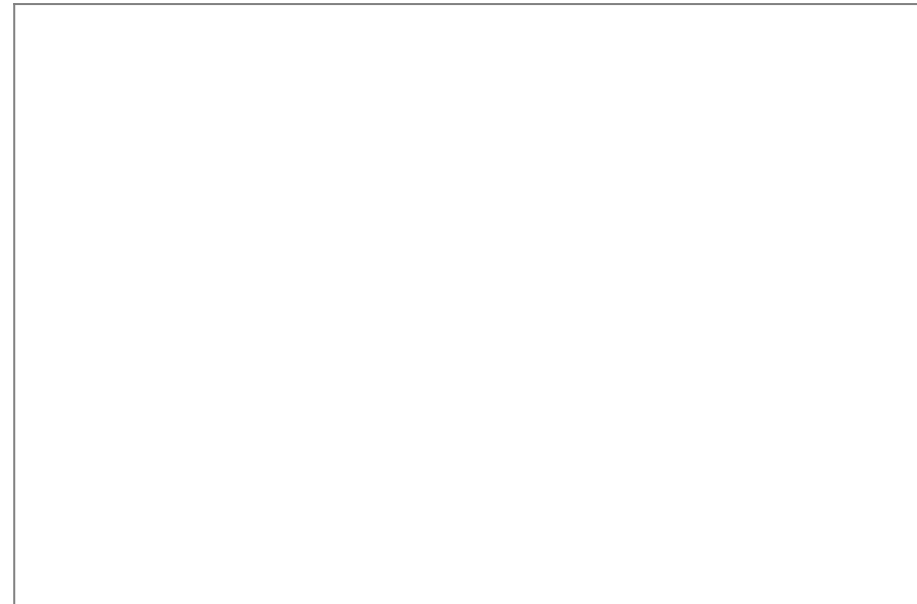
GROUND FLOOR  
454 sq ft. (42.1 sq m.) approx.



1ST FLOOR  
521 sq ft. (48.4 sq m.) approx.



TOTAL FLOOR AREA: 1153 sq ft. (107.1 sq m.) approx.  
 Whilst every effort has been made to ensure the accuracy of the floorplan contained here, measurements of doors, windows, rooms and any other items are approximate and no responsibility is taken for any error, omission or mis-statement. This plan is for illustrative purposes only and should be used as such by any prospective purchaser. The services, systems and appliances shown have not been tested and no guarantee as to their quantity or efficiency can be given.  
 Made with Metropac (2008)



9 Gatley Road, Cheadle, Cheshire SK8 1LY Tel. 0161 428 1488 Fax. 0161 428 1479  
 Email. [mail@andrewdawson.co.uk](mailto:mail@andrewdawson.co.uk)