



**Stockwell Road, SW9**

**£450,000**

**Dexters**



## Stockwell Road, SW9

A lovely two bedroom first floor period conversion of a beautiful townhouse located on Stockwell Road. The property comprises two double bedrooms at the front of the building, an open plan reception room with kitchen at the back, and a bathroom in the middle. The apartment offers ample storage throughout and wooden floors.

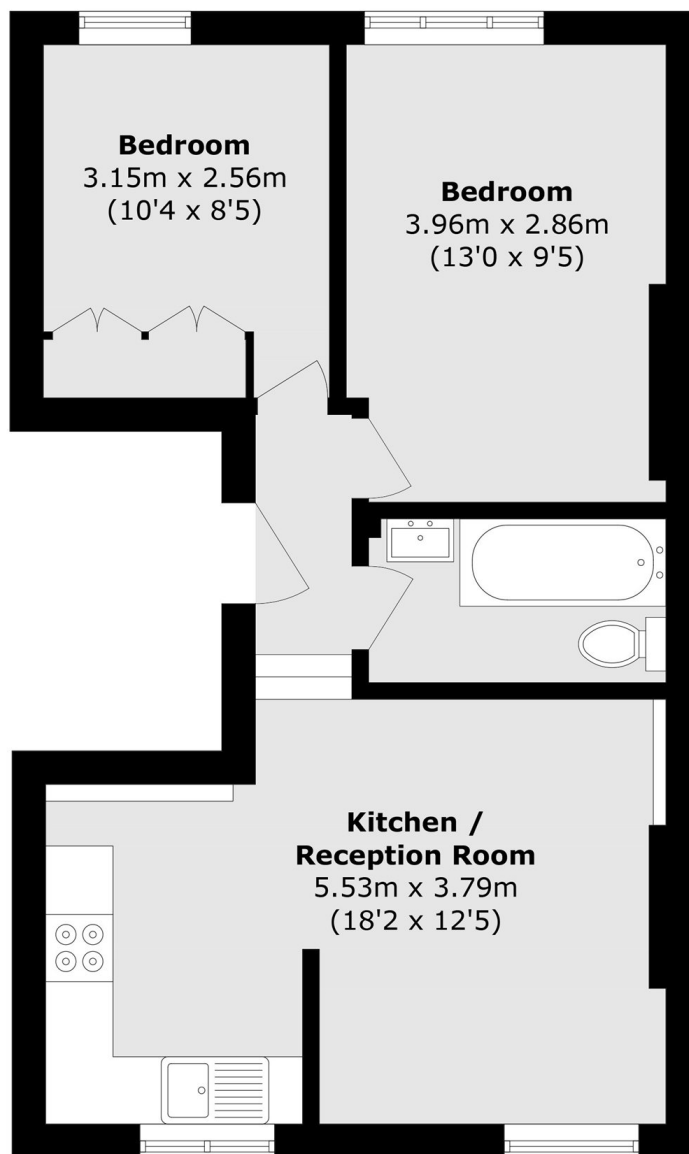
Stockwell Road is a vibrant and well connected location in SW9, ideally positioned between Brixton and Stockwell. It offers easy access to a wide range of cafés, restaurants, and local amenities, along with excellent transport links via the Victoria and Northern lines. Nearby green spaces, including Larkhall Park and Brockwell Park, provide a great balance to city living.

### Features

- Two Double Bedroom
- First Floor
- Open Plan
- Built in Storage



# Stockwell Road, London, SW9



Total area (approx.): 46.8 sq. m (503.7 sq. ft)