



## WARWICK DRIVE, SW15

£510,000

Two Bedrooms  
Second Floor  
Private Balcony  
Lift Service  
On-Site Caretaker  
Well Maintained Communal Gardens

@marshandparsons  
marshandparsons.co.uk

MARSH &  
PARSONS



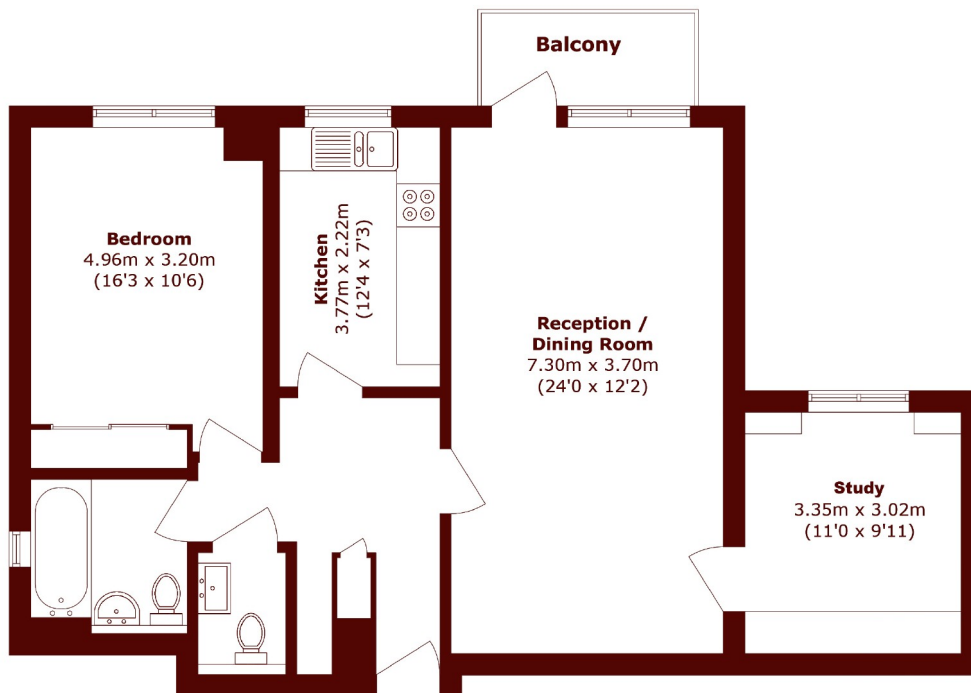
# ABOUT THE PROPERTY

Marsh & Parsons is proud to represent this second floor stylish and chic apartment. The property comprises an entrance hallway, large double bedroom with built in wardrobes, modern kitchen, large separate reception room with private balcony and spacious study room / spare room off the reception room.

Willow Lodge is located in Warwick Drive between the Upper Richmond Road, SW15 and Queens Ride, SW13. Barnes Village, Putney, East Sheen and Richmond are all easily accessed by local bus routes. Barnes Common and Putney Common are a short walk away and there is good access to West Putney and the River Thames.



# STEP INSIDE WARWICK DRIVE



Total area (approx.): 81.0 sq. m (871.8 sq. ft)  
Balcony area (approx.): 3.8 sq. m (40.9 sq. ft)

**Barnes & East Sheen**  
020 8563 8333

Energy Rating: C We aim to make our particulars both accurate and reliable. However, they are not guaranteed; nor do they form part of an offer or contract. If you require clarification on any points then please contact us, especially if you're traveling some distance to view. Please note that appliances and heating systems have not been tested and therefore no warranties can be given as to their good working order

**MARSH &  
PARSONS**