



## Premiere Place, E14

£450,000

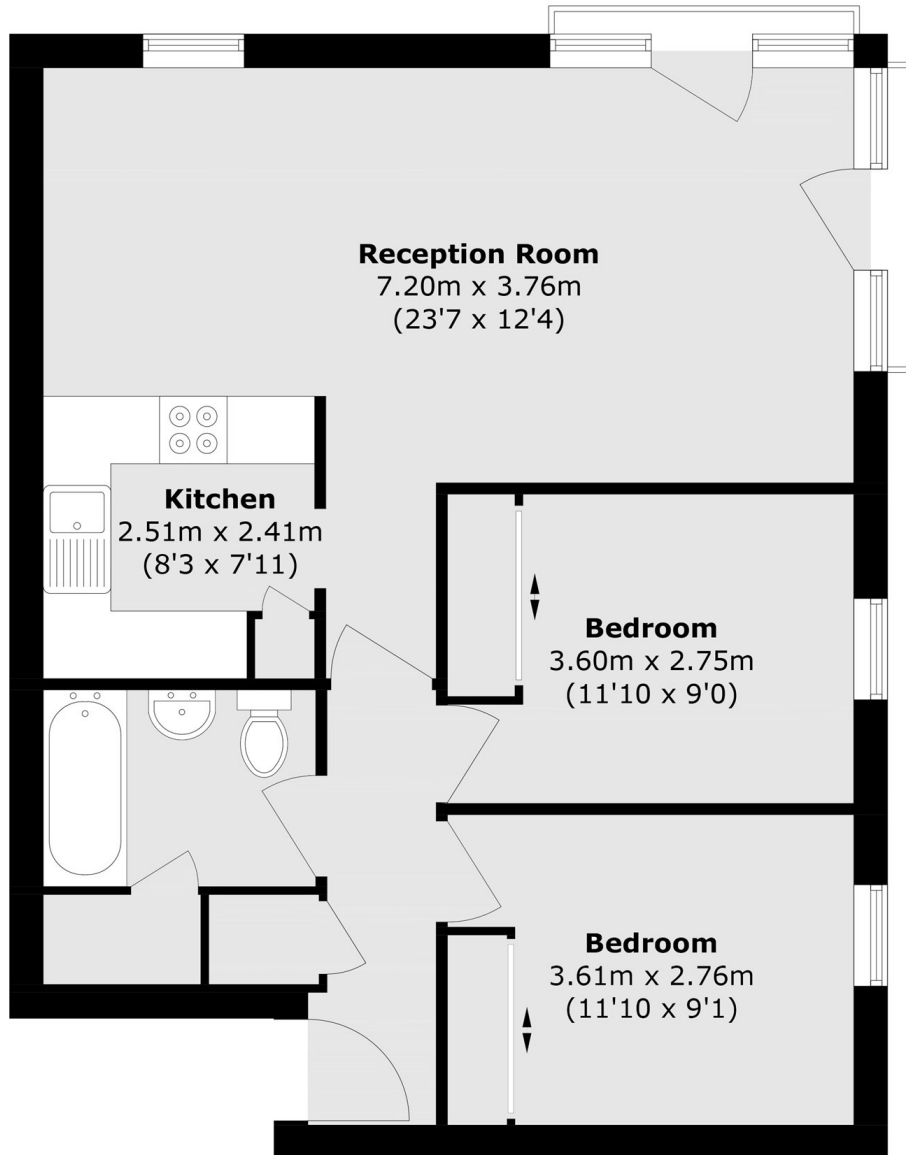
We are delighted to offer this two-bedroom home to the market, located within the sought-after Premiere Place development. The property benefits from a re-fitted bathroom, wooden flooring throughout, a day porter service, and is offered on a chain-free basis.

Premiere Place is ideally located just 0.1 miles from Westferry DLR station, providing excellent transport links across the City. In addition, Canary Wharf is within easy walking distance, offering a wide range of shops, restaurants, and amenities.

### Features

- Premiere Place Development
- Chain Free
- Day Porter
- Wooden Flooring Throughout
- Re-Fitted Bathroom
- Short Walk To Canary Wharf

Premiere Place,  
London, E14



Total area (approx.): 64.7 sq. m (696.4 sq. ft)