



The Highway, London E1W

Guide price £375,000 Leasehold





Description

This well-proportioned apartment is ideally situated on the third floor of a contemporary riverside development along the Thames, positioned equidistant between Canary Wharf and The City. The development features beautifully maintained communal gardens with river views and vistas toward the Canary Wharf skyline. Residents benefit from 24-hour concierge service and comprehensive leisure amenities including a gymnasium and swimming pool. Allocated secure parking is also included.



- 3rd floor
- 1 Bedroom
- 1 Bathroom
- 24hr concierge
- Gym & Leisure facilities

- Lift
- Allocated Secure Parking
- Approx. 587 sq ft
- Leasehold: 960 years
- No ground rent

Free Trade Wharf

Approximate Gross Internal Area = 54.6 sq m / 587.7 sq ft

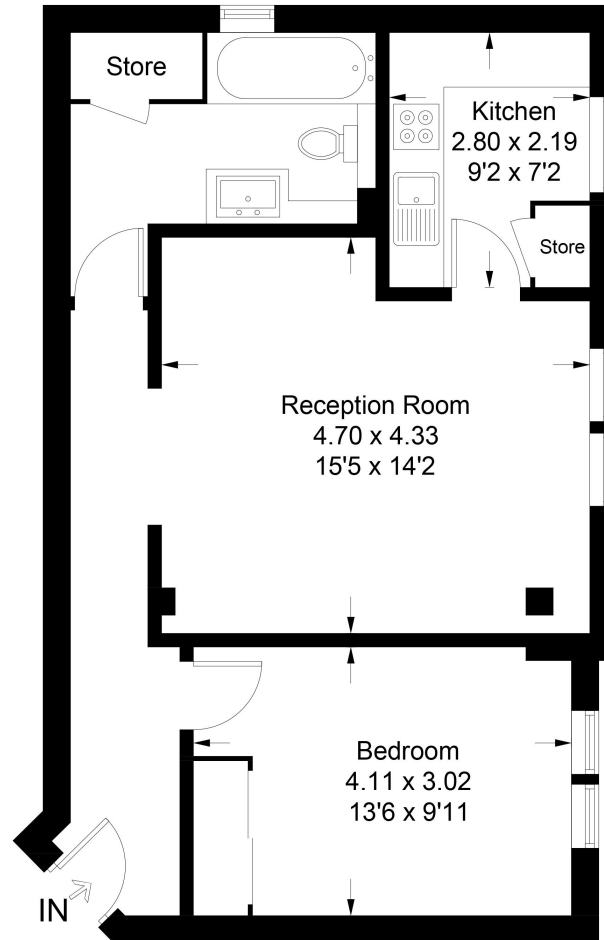


Illustration for identification purposes only, measurements are approximate, not to scale. Fourlabs.co © (ID1288472)

City
25 Walbrook The Walbrook
Building,
London EC4N 8AF
+4420 7337 4000

Urban living, your way.

jll.co.uk/residential

© 2019 Jones Lang LaSalle IP, Inc. All rights reserved. All information contained herein is from sources deemed reliable; however, no representation or warranty is made to the accuracy thereof.

