

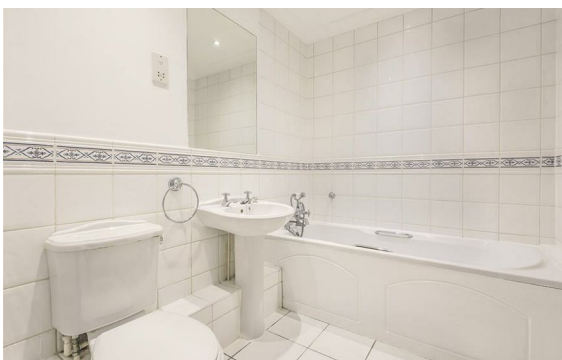


**York Terrace West, Marylebone, London, NW1**

Rent £1,100 Per Month

2 Bed | 2 Bath | 1 Reception

*Please call us on 020 7724 2233 or email us [info@newingtonstates.com](mailto:info@newingtonstates.com) to book a viewing.*



Spacious and quiet apartment moments from Regent's Park.

A well-proportioned two-bedroom, two-bathroom apartment set within a secure portered building, offering comfortable living in a highly convenient central location.

The property features a bright reception room, a separate fully fitted kitchen, and two well-sized double bedrooms. Both bathrooms provide added convenience, making the layout ideal for professionals or sharers.

Ideally located close to Marylebone and Regent's Park, with excellent transport links via Baker Street Station and easy access to Marylebone High Street.

EPC rating: C

## Energy Efficiency Rating: C

Agents Note: Whilst every care has been taken to prepare these particulars, they are for guidance purposes only. All measurements are approximate and are for general guidance purposes only and whilst every care has been taken to ensure their accuracy, they should not be relied upon and potential buyers/tenants are advised to recheck the measurements.

**NEWINGTON**  
— ESTATES —

60 Upper Montagu Street

London

W1H 1SN

020 7724 2233

[info@newingtonestates.com](mailto:info@newingtonestates.com)

<http://www.newingtonestates.com>