



Solway Road, N22

£2,150 Per calendar month

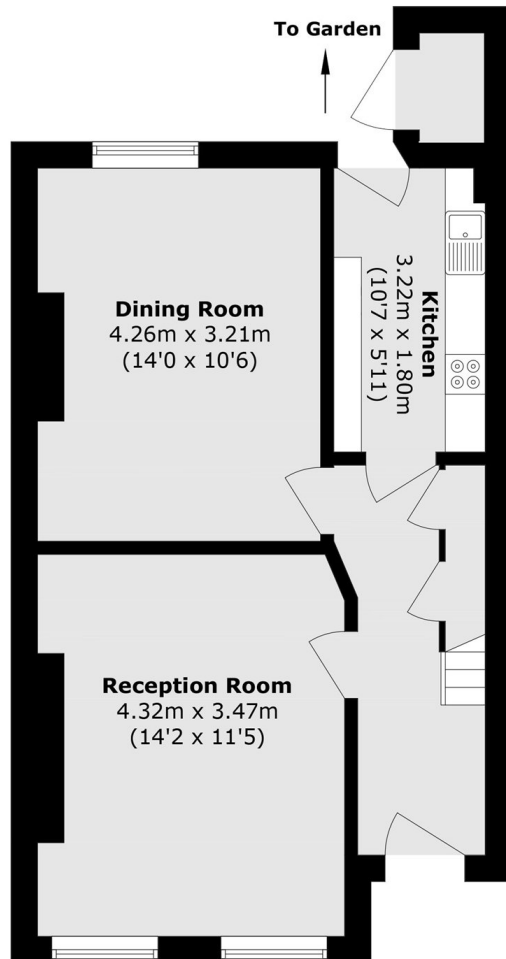
The property is a well-presented three-bedroom terraced house offering generous living space, including a bright reception room, separate dining room, and a fitted kitchen leading to the garden. Upstairs comprises two spacious double bedrooms, a further bedroom ideal as a study or nursery, and a family bathroom. The property can include two double beds (subject to condition), along with a dining table and four chairs. White goods including a dishwasher, washing machine, tumble dryer and fridge freezer are also included. No HMO.

Ideally located within a short walk of Wood Green Underground station, the property benefits from excellent transport links into Central London. Wood Green High Street and shopping centre are also within easy reach, offering a wide range of shops, restaurants and amenities. The area is well served by local bus routes with convenient access to Edmonton, Enfield, the A406 North Circular and A10, making it a highly practical and well-connected location.

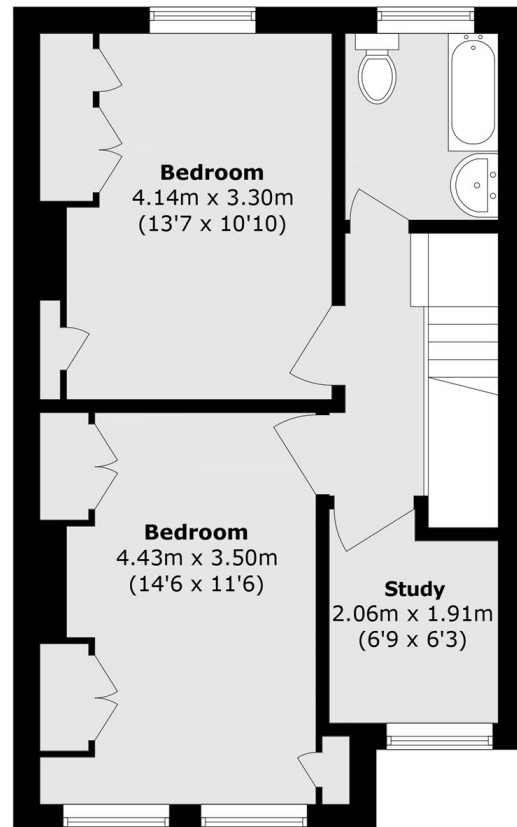
Features

Three Bedrooms
Two Receptions
One Bathroom

Solway Road, London, N22



Ground Floor



First Floor

Total area (approx.): 86.1 sq. m (926.7 sq. ft)
External Storage area (approx.): 0.9 sq. m (9.6 sq. ft)