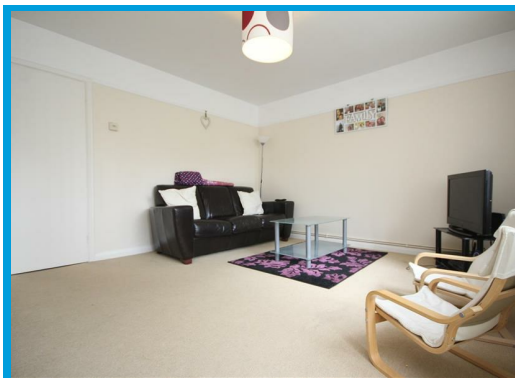
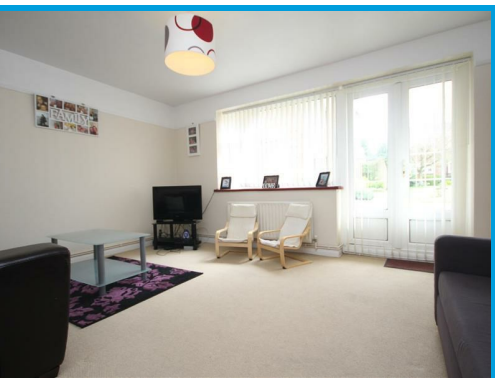




Telford Court, Clandon Road Guildford, Surrey GU1 2EA

£1,700 PCM

Presented in excellent order throughout, this two double bedroom apartment is located in a peaceful, leafy town centre location with use of communal grounds and parking.



Description

Located moments from Guildford town centre in a highly sought after position, this two double bedroom apartment is presented in excellent order throughout.

The accommodation comprises a hallway leading a good size lounge with doors to the communal grounds, a large master bedroom with ample built in wardrobes, a further double bedroom, a bathroom with shower and a recently fitted kitchen with dining area.

Further features include parking and communal gardens.



Energy Efficiency Rating		Current	Potential
Very energy efficient - lower running costs			
(92 plus) A			
(81-91) B			
(69-80) C			
(55-68) D			
(39-54) E			
(21-38) F			
1-10 G			
Not energy efficient - higher running costs			
England & Wales		76	78
EU Directive 2002/91/EC			

Environmental Impact (CO ₂) Rating		Current	Potential
Very environmentally friendly - lower CO ₂ emissions			
(92 plus) A			
(81-91) B			
(69-80) C			
(55-68) D			
(39-54) E			
(21-38) F			
1-10 G			
Not environmentally friendly - higher CO ₂ emissions			
England & Wales			
EU Directive 2002/91/EC			

