



WILL CAMPBELL

exp[®] UK

@ will.campbell@exp.uk.com

willcampbell.exp.uk.com

07518 198 785

**Flat 124, Regents Court, Sopwith Way,
£340,000**

 1  1  1



- Modern one-bedroom apartment in Regents Court, KT2
- Bright reception room with space for dining and home working
- Separate fitted kitchen with tiled floor and integrated oven
- Contemporary tiled bathroom
- Second-floor position in a secure gated development
- Stylish engineered wood flooring in reception and hallway
- Spacious double bedroom with built-in wardrobe
- Allocated gated parking space
- Access to residents' gym and communal gardens
- Next to Kingston Station and moments from town centre shops and riverside

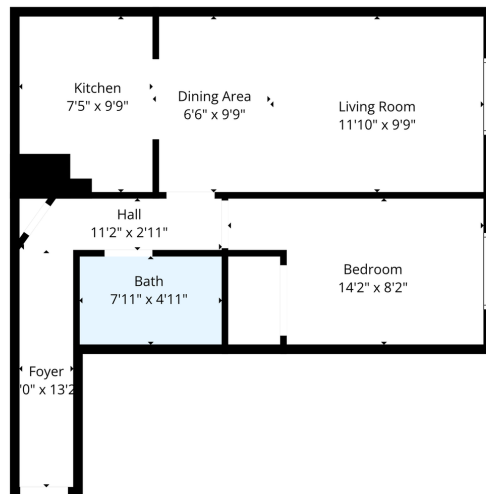


Regents Court, Sopwith Way, Kingston Upon Thames, KT2 5AQ
Bright and well-presented one-bedroom apartment set on the second floor of a gated development beside Kingston Station.

Features include a spacious reception room with engineered wood flooring, a set-back fitted kitchen, double bedroom with built-in wardrobe, and a modern tiled bathroom. Residents enjoy secure gated parking (allocated space), communal gardens, and access to a gym.

Moments from Kingston's shops, cafés, restaurants and riverside walks, with fast trains to London Waterloo. Ideal for first-time buyers or investors.

Call now to arrange your viewing.



TOTAL: 494 sq. ft.
FLOOR 1: 494 sq. ft.
EXCLUDED AREAS: WALLS: 53 sq. ft.