



**Cranes Park, KT5**

**£1,500,000**

**Dexters**



## Cranes Park, KT5

An imposing, four bedroom, two reception room family home on a highly sought after road in Surbiton. With original features throughout, this wonderful property has plenty of character and huge potential.

On the ground floor there are two, large, bright reception rooms and a kitchen with utility space. There are original fireplaces and decorative ceilings throughout. Upstairs are four well proportioned bedrooms, a bathroom and a separate WC.

To the front of the house there is a pretty paved courtyard and off street parking. To the rear is a lovely, mature private garden with soft planting and a large lawn.

This property has enormous potential to extend and to personalise (STPP).

With Surbiton high street, the mainline train station, with a 16 minute train to London Waterloo ( and only 0.5 miles from the house), Kingston town centre, some fantastic schools and the River Thames all approximately half a mile away, Cranes Park is a sought after road and a convenient place to live.

### Features

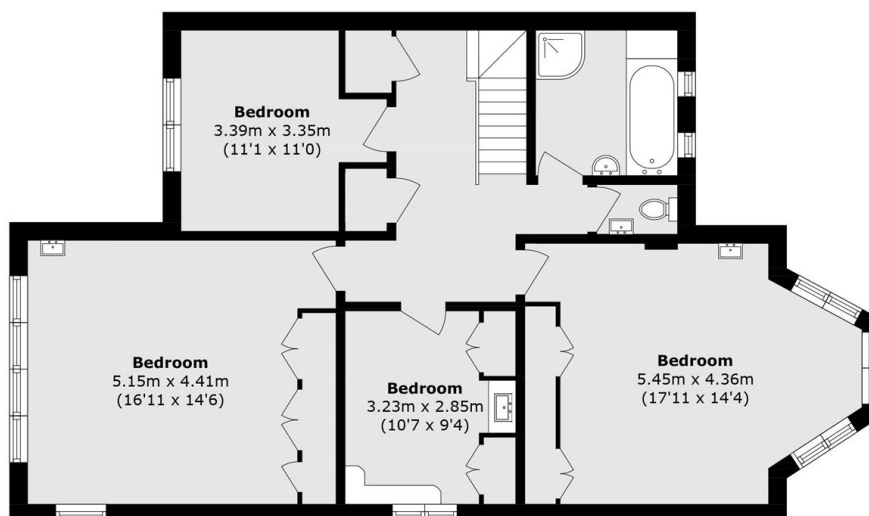
- Detached House
- Original Features
- Off Street Parking
- Mature Garden
- Ideal Location
- Potential To Extend (STPP)



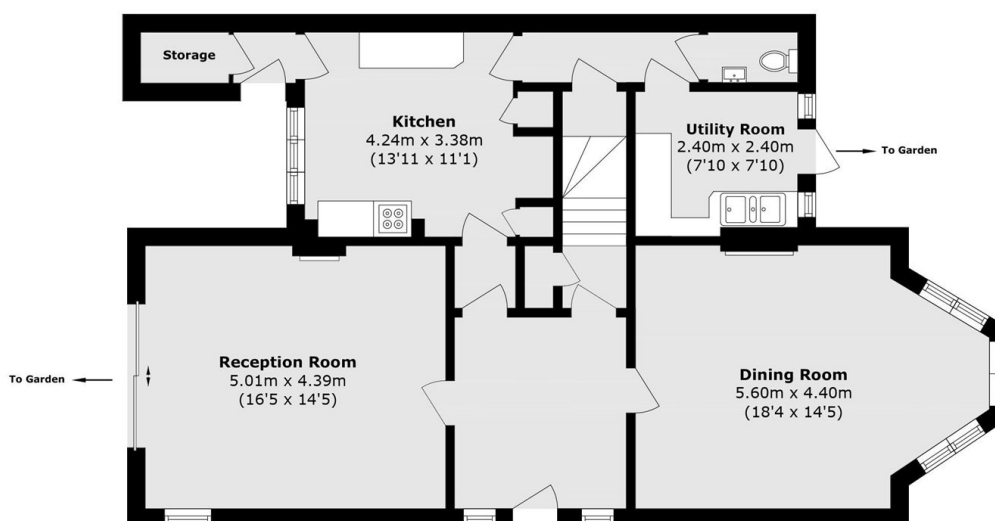




# Cranes Park, Surbiton, KT5



**First Floor**



**Ground Floor**

Total area (approx.): 177.1 sq. m (1906.3 sq. ft)