



Cliffview Road, SE13

£950,000

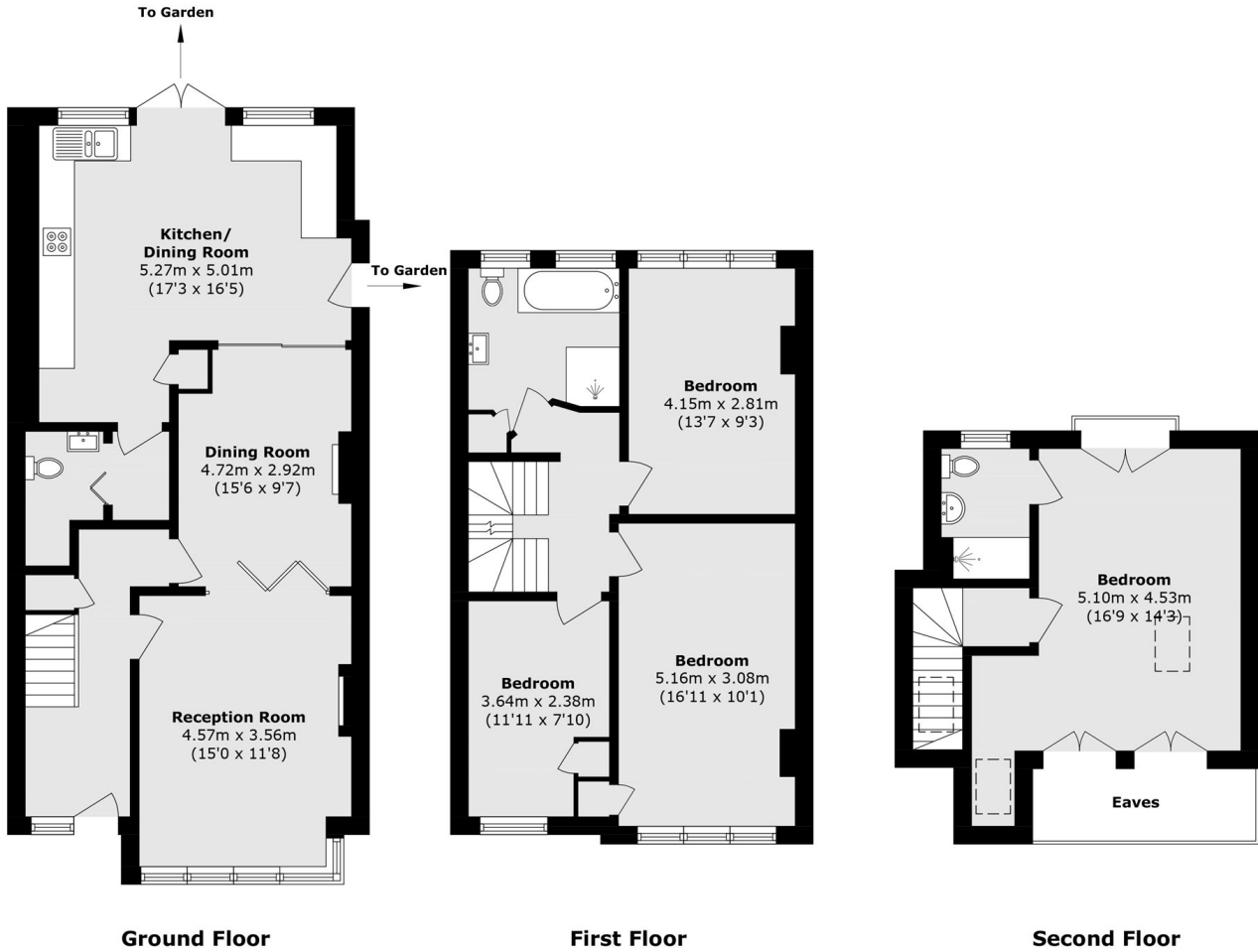
A well-presented four bedroom semi-detached house arranged over three floors with off-street parking. There is a warm and inviting reception room, a dining room leading to the extended kitchen which gives access to the well-maintained rear garden. The converted loft is a generous size, has an en suite bathroom and fantastic views of the city skyline.

Cliffview Road is a lovely residential road located just around the corner from Hilly Fields and between St. John's, Lewisham, Brockley and Ladywell train stations giving excellent transport links.

Features

- Four Bedrooms
- Semi-Detached
- Two Bathrooms
- Off-Street Parking
- Close To Hilly Fields
- Close To Transport Links

Cliffview Road, London, SE13



Total area (approx.): 145.7 sq. m (1568.3 sq. ft)
(Excluding Eaves)