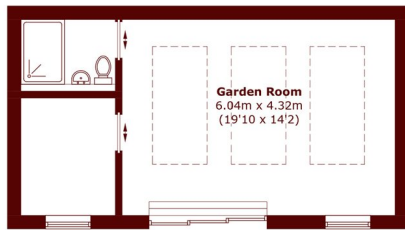




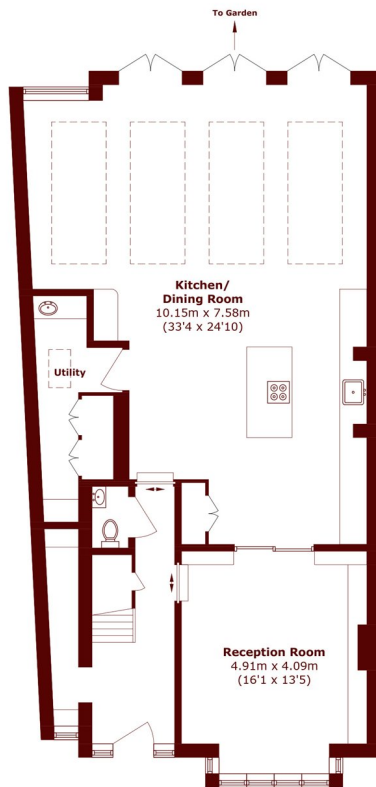
ULLSWATER ROAD, SW13

£12,500 per month

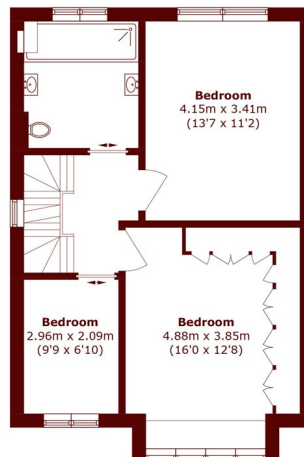
STEP INSIDE ULLSWATER ROAD



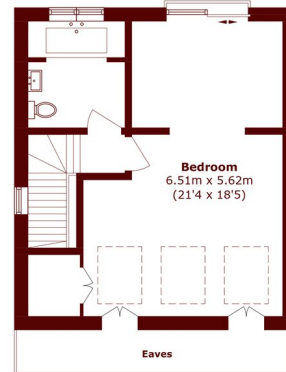
Ground Floor



Ground Floor



First Floor



Second Floor

Total area (approx.): 197.0 sq. m (2120.5 sq. ft)
Outbuilding area (approx.): 35.6 sq. m (383.2 sq. ft)
(Excluding Eaves & Void)

Barnes & East Sheen
020 8563 8222

Energy Rating: We aim to make our particulars both accurate and reliable. However, they are not guaranteed; nor do they form part of an offer or contract. If you require clarification on any points then please contact us, especially if you're traveling some distance to view. Please note that appliances and heating systems have not been tested and therefore no warranties can be given as to their good working order

**MARSH &
PARSONS**