



PCM

£1,400

** AVAILABLE END OF APRIL ** ** FURNISHED **

This two bedroom end of terrace house is situated within a short walk of High Wycombe's town centre and train station. The accommodation comprises; entrance hall, modern fitted kitchen, large lounge/dining room, modern bathroom and two double bedrooms. The property further benefits from gas central heating, UPVC double glazing, private garden and driveway parking.

HOLDING DEPOSIT: £323.08
DEPOSIT REQUIRED: £1615.40
TENANCY TERM: 12 MONTHS

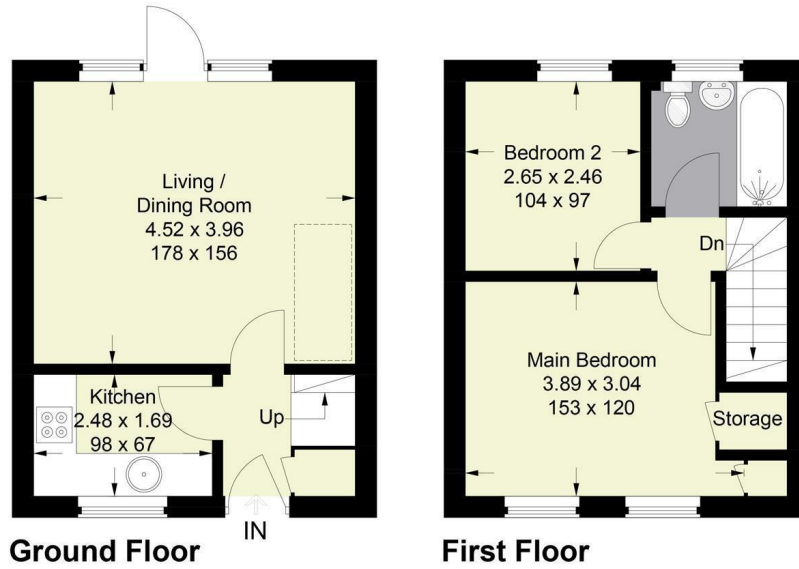
- FURNISHED
- LOUNGE/DINER
- WALK OF STATION
- UPVC DOUBLE GLAZING
- TWO BEDROOM SEMI-DETACHED PROPERTY
- PRIVATE GARDEN
- DRIVEWAY PARKING
- GAS CENTRAL HEATING



58 Wheelers Park, High Wycombe, Bucks, HP13 6GH

Estate Agents ~ Lettings Agents ~ Valuers ~ Independent Mortgage Advisors

Approximate Gross Internal Area
Ground Floor = 26.4 sq m / 284 sq ft
First Floor = 26.1 sq m / 281 sq ft
Total = 52.5 sq m / 565 sq ft



This plan is for layout guidance only. Not drawn to scale unless stated. Windows and door openings are approximate. Whilst every care is taken in the preparation of this plan, please check all dimensions, shapes and compass bearings before making any decisions reliant upon them.
© CJ Property Marketing Ltd Produced for Hurst

