

Luxury+Prestige



OSHUN

1 THE DRIVE, BRUDNELL AVENUE, CANFORD CLIFFS, POOLE, BH13 7NW













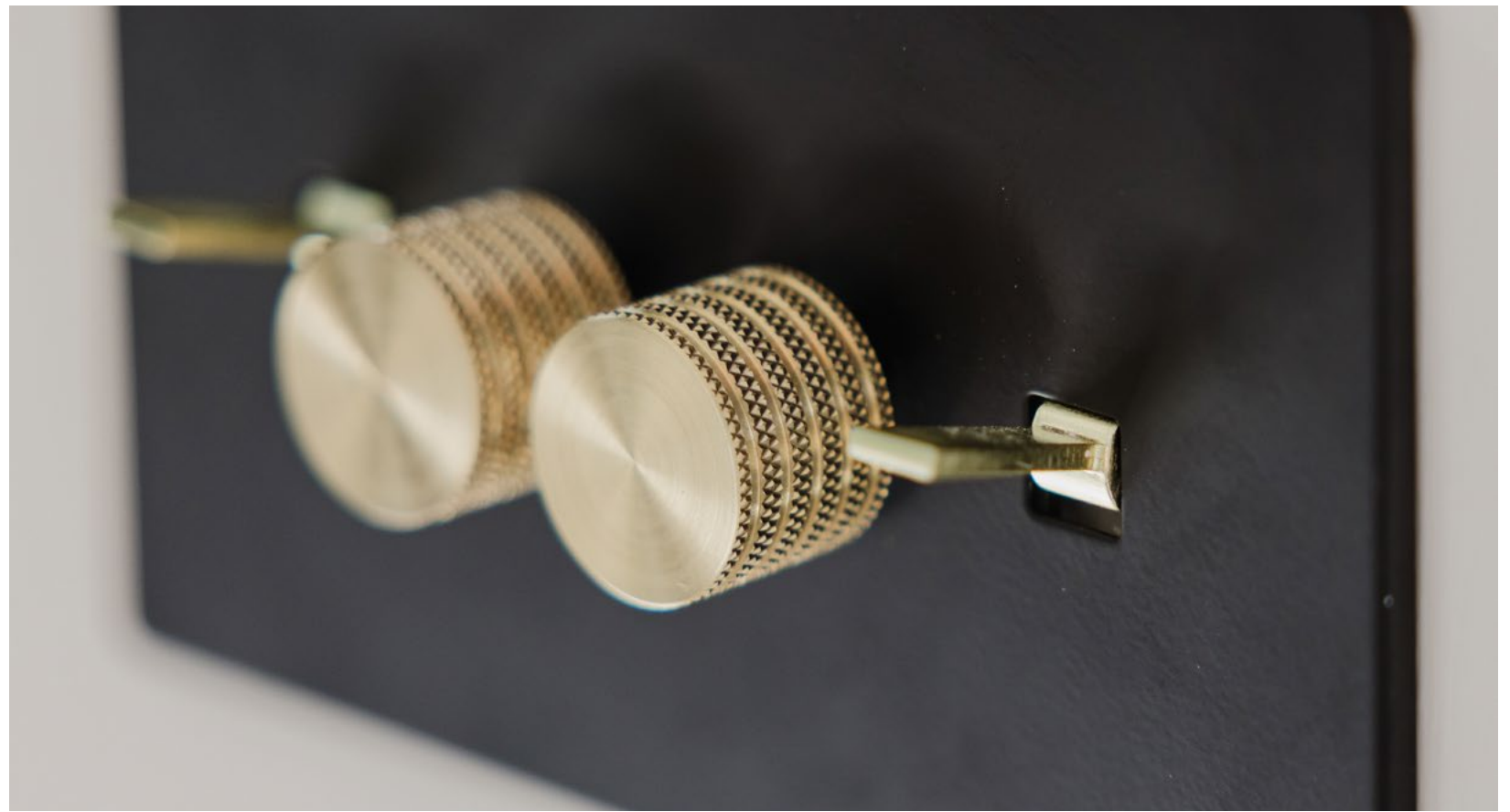














TAKE A STEP INSIDE



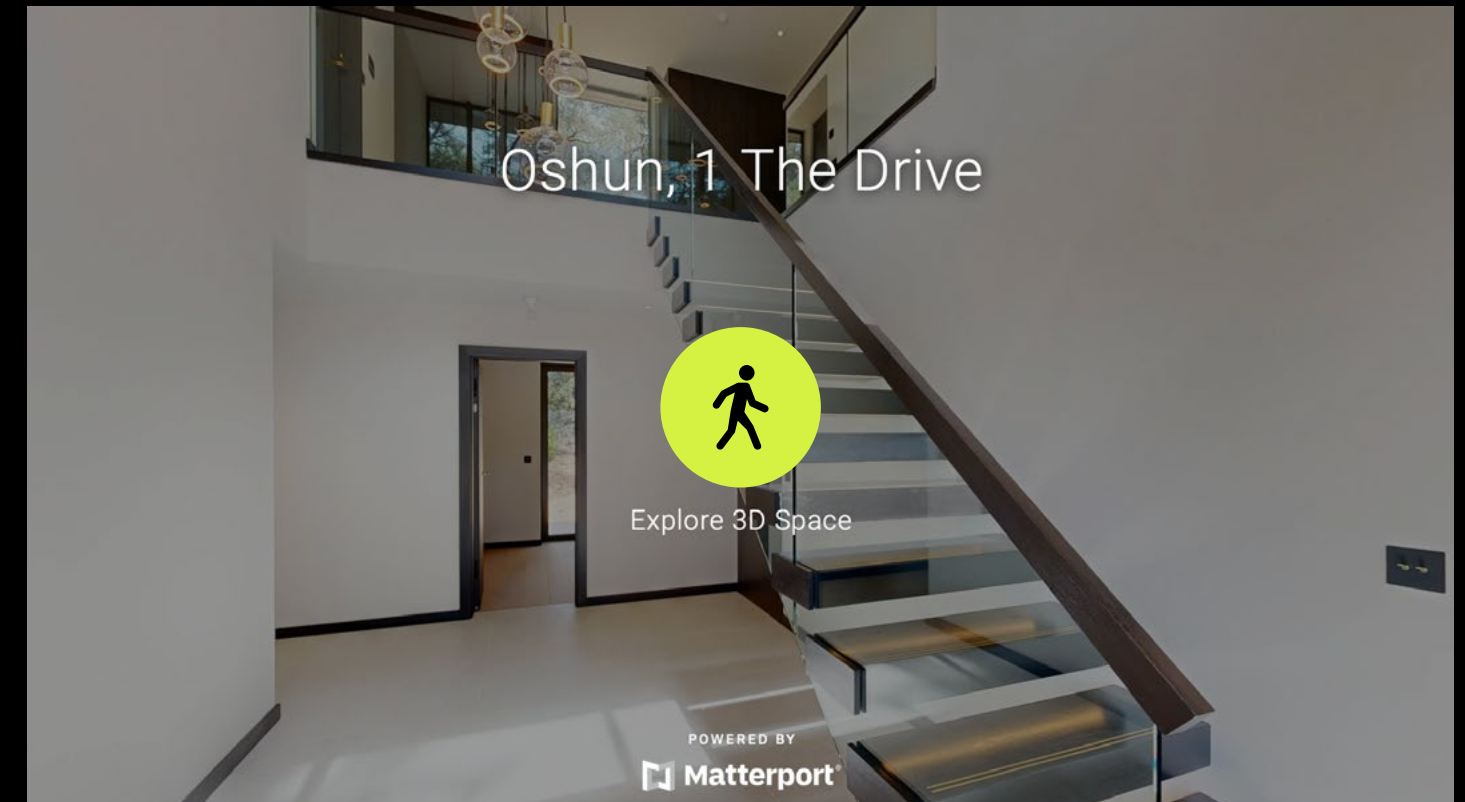
Simply click on the thumbnail above to let one of our team give you a guided tour of the highlights.

If you are longing for a more in-depth explore at your own pace, then head across the page to our fully interactive 3D tour.



Can't wait to view in person?

All of our properties feature a professionally produced one minute video, personally introduced by a member of our team as well as a fully interactive 3D tour.



Simply click on the thumbnail above to take a step inside and explore this beautiful home.

This fully immersive experience allows you to 'click and drag' your way through the property at your own pace. It is best viewed on a desktop screen or in landscape mode on your smartphone or tablet.



Floorplan

Oshun, 1 The Drive, Brudenell Avenue
Canford Cliffs, Poole, BH13 7NW

GROSS INTERNAL AREA

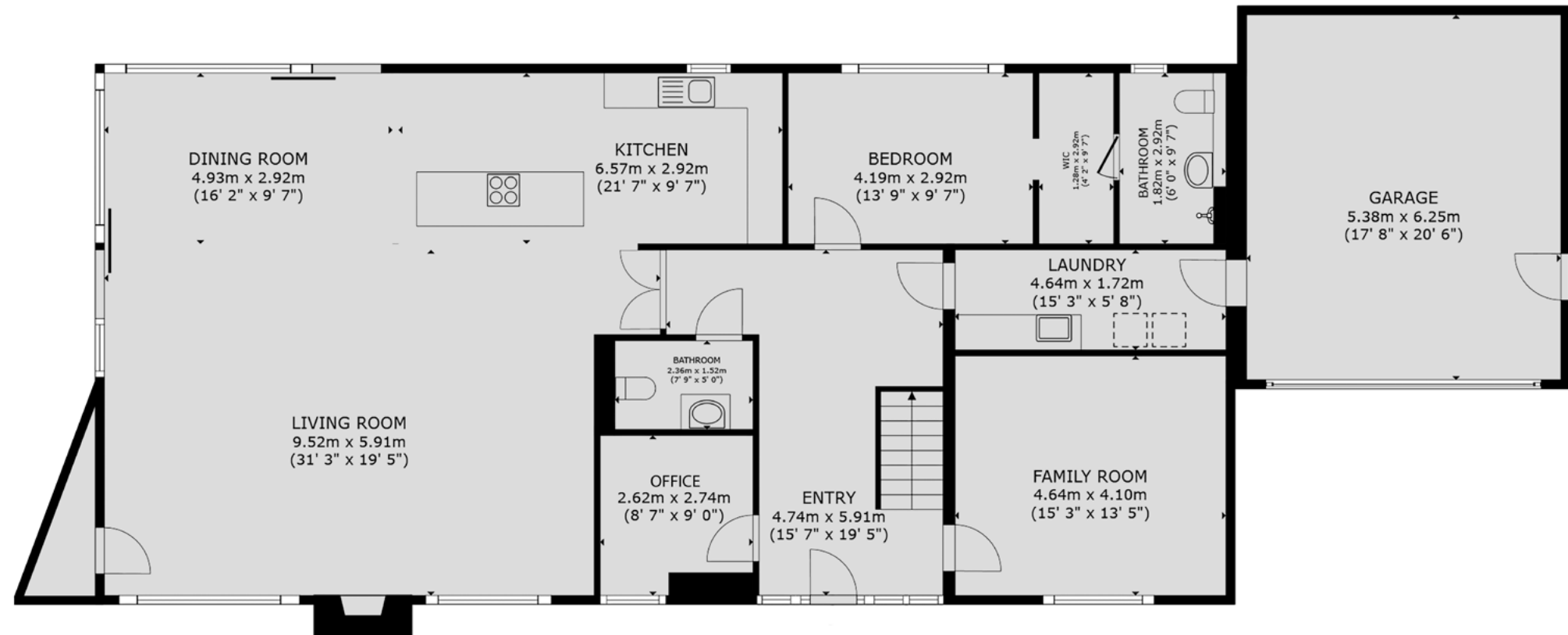
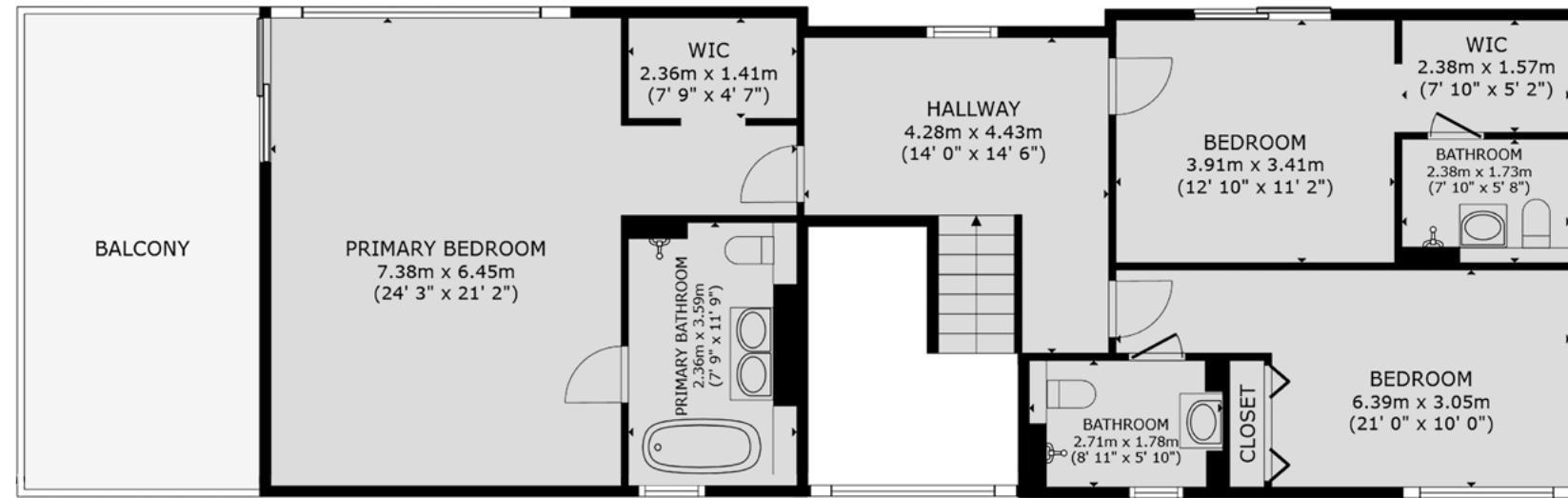
House:

Ground Floor: 1,868 sq. ft / 174 m²
First Floor: 1,160 sq. ft / 108 m²
Total: 3,028 sq. ft / 282m²

Garage: 362 sq. ft / 34 m²

Overall Total: 3,390 sq. ft / 316 m²

Sizes and dimensions are approximate, actual may vary.



Summary

Defined by its proximity to the coastline and to nature, Oshun is a newly built luxury property tucked away amidst a grove of pine trees in an exclusive gated enclave of just four residences.

A 320-metre stroll (approximately 6 minutes) leads you from this peaceful seclusion to the water's edge at Poole Harbour, with the world-renowned shoreline of Sandbanks also within easy walking or cycling distance.

The ultimate luxury in today's world, Oshun offers unmatched privacy with dual-layered security: a gated communal entrance at the end of a private drive, followed by the property's own secure perimeter. An unrivalled blend of private architectural sanctuary and the vibrant coastal lifestyle of Canford Cliffs and Sandbanks, Oshun is a property that must be visited to be truly understood. In a market where high-end properties can often feel standardised and interchangeable, Oshun represents a singular architectural statement. |

It is a home for those who value bespoke character and distinctive individuality over the conventional. Constructed to an uncompromising level of detail both externally and internally, Oshun combines traditional and modern materials in a natural aesthetic, surrounded by the scent of pines.

Details

Guide Price: £3,950,000

Tenure: Freehold

Lease Length: N/A

Maintenance: N/A

Ground Rent: N/A*

* Ground Rents can increase over time and advice should always be sought from your solicitor before exchange of contracts.

Stamp Duty: Main Home £387,750**
Additional Home £585,250**

** based on guide price

Local Authority: BCP Council

Council Tax: Band TBC
2025/2026 £x,xxx.xx pa***

*** Amount shown is for a main home, please seek advice for additional home.

Services: Mains gas, electricity, water and drainage

Key features

- + 'Gold-standard' privacy within a secure enclave of just four residences.
- + A genuine 320-metre (6-minute) walk to the shores of Poole Harbour
- + Private terrace overlooking the fairways of the prestigious Parkstone Golf Club
- + Premium and custom-crafted external and internal finishes throughout
- + Ideal for lovers of water-sports and golf
- + Exceptional open plan living space with dual aspect
- + Additional sitting room and office
- + 4 exquisite bedrooms, 4 bathrooms including a suite on the ground floor
- + Air source heat pump and the latest thermal insulation
- + Ready for immediate occupation

Our team



Steve Isaacs
Director

07970 878106
steve@luxuryandprestige.com



David Chissell
Director

07795 835647
david@luxuryandprestige.com



Harriet Towing
Head of Sales

07809 908718
harriet@luxuryandprestige.com



Adrianna Ciereszko
Photographer

01202 007373
adrianna@luxuryandprestige.com



Ryan Horan
Land & New Homes

07512 196688
ryan@luxuryandprestige.com



Thomas Powner
Residential Sales

07437 491094
tom@luxuryandprestige.com



Asia Roberston
Social Media Manager

01202 007373
asia@luxuryandprestige.com



Valentina Morana
Residential Sales

07366 799790
valentina@luxuryandprestige.com



Joanne Bound
Search Agent

01202 007373
jbound@luxuryandprestige.com

Get in touch

In person:	28A Haven Road Canford Cliffs Poole BH13 7LP
By phone:	01202 007373
By email:	info@luxuryandprestige.com
Online:	luxuryandprestige.com
Facebook:	facebook.com/luxuryandprestige
Instagram:	@luxuryprestigerealty
Property ref:	0924
Published:	June 2025



Important notice

Luxury and Prestige Realty Ltd, its clients and any joint agents give notice that 1: They are not authorised to make or give any representations or warranties in relation to the property either here or elsewhere, either on their own behalf or on behalf of their client otherwise. They assume no responsibility for any statement that may be made in these particulars. These particulars do not form part of any offer or contract and must not be relied upon as statements or representations of fact. 2: Any areas, measurements or distances are approximate. The text, photographs and plans are for guidance only and are not necessarily comprehensive. It should not be assumed that the property has all necessary planning, building regulation or other consents and Luxury and Prestige have not tested any services, equipment or facilities. Purchasers must satisfy themselves by inspection or otherwise.

Luxury+Prestige

luxuryandprestige.com