



George Street, W1H

£805 Per week

Dexters



George Street, W1H

A modern one bedroom apartment on the first floor of an attractive Georgian building on George Street, moments from Hyde Park.

The property has an open-plan kitchen/reception room with wood flooring, high ceilings and floor-to-ceiling windows providing superb natural light. The kitchen has brand new built-in appliances kitchen island.

The bedroom is a good sized double room with built-in wardrobes and there is a modern shower room off the hallway.

The apartment forms part of a substantial building which has just been completely refurbished throughout, with phone entry systems to all of the flats.

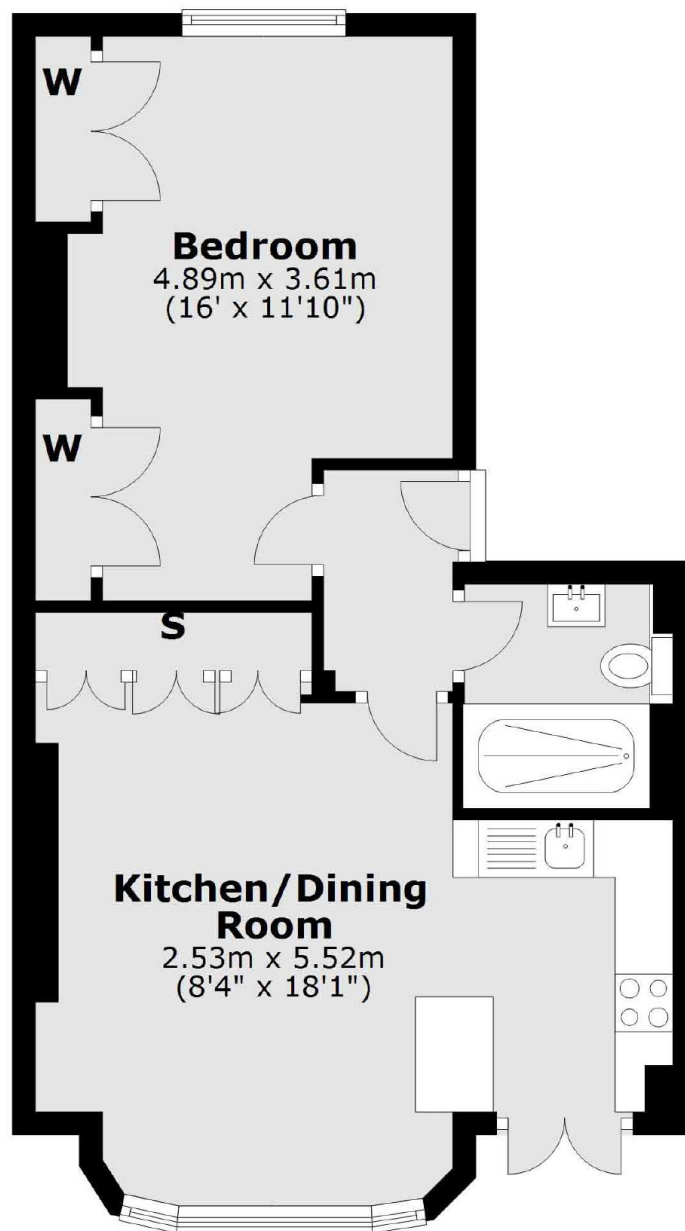
George Street is moments from the open spaces of Hyde Park and a short walk from the vibrant shops, bars and restaurants of Portman Village and Marylebone Village. Edgware Road, Marble Arch and Bond Street stations are all close by.

Features

- One Bedroom
- Unfurnished
- Owned and Managed by The Portman Estate
- Complimentary Membership to Portman Concierge



**George Street,
London, W1H**



First Floor

Total area: approx. 44.7 sq. metres (481.4 sq. feet)

Dexters

Marylebone
53-55 Weymouth Street
London
W1G 8NJ
Lettings
0207 224 5545

Energy Rating: E. We aim to make our particulars both accurate and reliable. However they are not guaranteed; nor do they form part of an offer or contract. If you require clarification on any points then please contact us, especially if you're traveling some distance to view. Please note that appliances and heating systems have not been tested and therefore no warranties can be given as to their good working order.

 **RICS** | Regulated
Estate Agent
and Letting Agent

[dexters.co.uk](https://www.dexters.co.uk)