

Tower View, Chartham, Canterbury, CT4 7TQ

£1,150 Per Month



GODFREY GARDENS



2



1



1



B

Tower View

Chartham, Canterbury CT4 7TQ

Welcome to this charming first-floor apartment located in the desirable area of Tower View, Chartham, near Canterbury. This delightful property offers a perfect blend of comfort and convenience, making it an ideal choice for individuals or small families seeking a modern living space.

Upon entering, you are greeted by a welcoming entrance hallway that leads to a spacious sitting room, perfect for relaxation or entertaining guests. The separate kitchen is well-equipped with essential white goods, providing a functional space for culinary pursuits. The apartment boasts two generously sized double bedrooms, ensuring ample space for rest and personal belongings. The bathroom features a shower over the bath, catering to your daily needs with ease.

One of the standout features of this property is the provision of parking for two vehicles, a rare find in many urban settings. This added convenience allows for easy access and peace of mind for residents and their guests.

Situated in Chartham, this apartment benefits from a tranquil environment while remaining close to the vibrant city of Canterbury, known for its rich history and cultural attractions. With excellent transport links and local amenities nearby, this property is perfectly positioned for both work and leisure.

In summary, this two-bedroom first-floor flat at Tower View offers a comfortable and practical living space, complemented by the convenience of parking and a prime location. It presents an excellent opportunity for those looking to settle in a charming community with easy access to the best that Canterbury has to offer. A pet fee for permission to keep a pet may apply under the superior lease.

Available July 2026
Rent is £1,150 per month
Deposit is £1326.92 (equal to 5 weeks rent)
Council tax band: C
Unfurnished
All viewings are strictly by appointment only.

Please refer to the fee's tab on our website (www.sallyhatcher.co.uk) for all information on fee's and deposit options

Entrance / Hallway

Kitchen

15'7" (4.751)

Bedroom 2

26'1" (7.957)

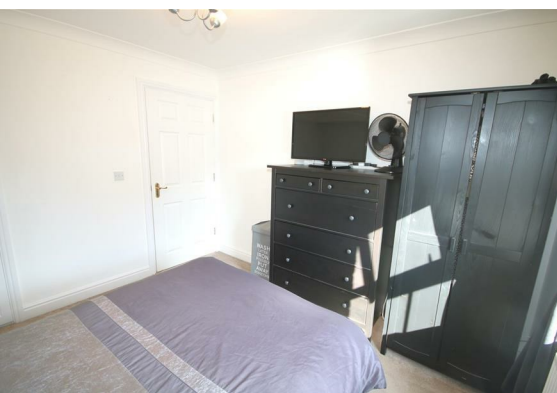
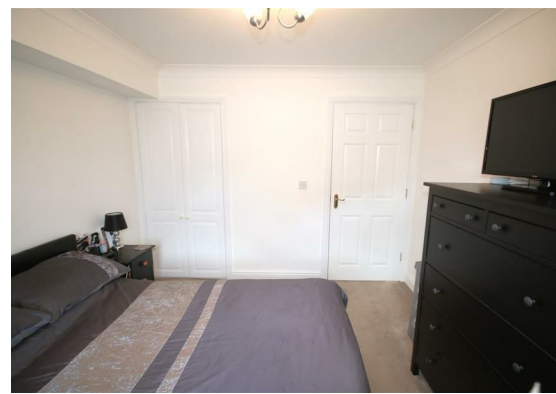




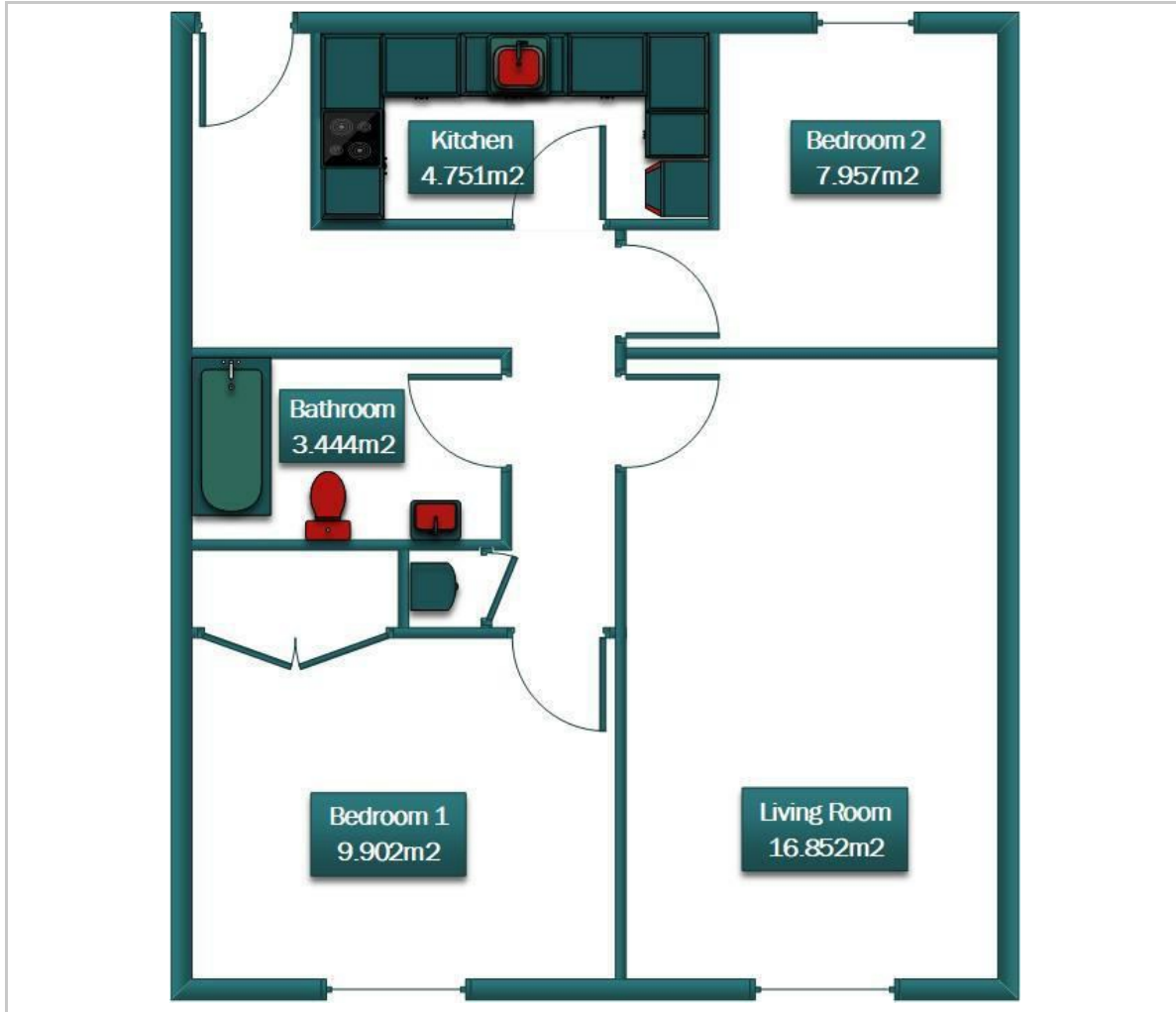
Living Room
55'3" (16.852)

Bedroom 1
32'5" (9.902)

Bathroom
11'3" (3.444)



Floor Plan



Viewing

Please contact us on 01227 733888 if you wish to arrange a viewing appointment for this property or require further information.

These particulars, whilst believed to be accurate are set out as a general outline only for guidance and do not constitute any part of an offer or contract. Intending purchasers should not rely on them as statements of representation of fact, but must satisfy themselves by inspection or otherwise as to their accuracy. No person in this firm's employment has the authority to make or give any representation or warranty in respect of the property.

Area Map



Energy Efficiency Graph

