



Telegraph Avenue, SE10 £350,000

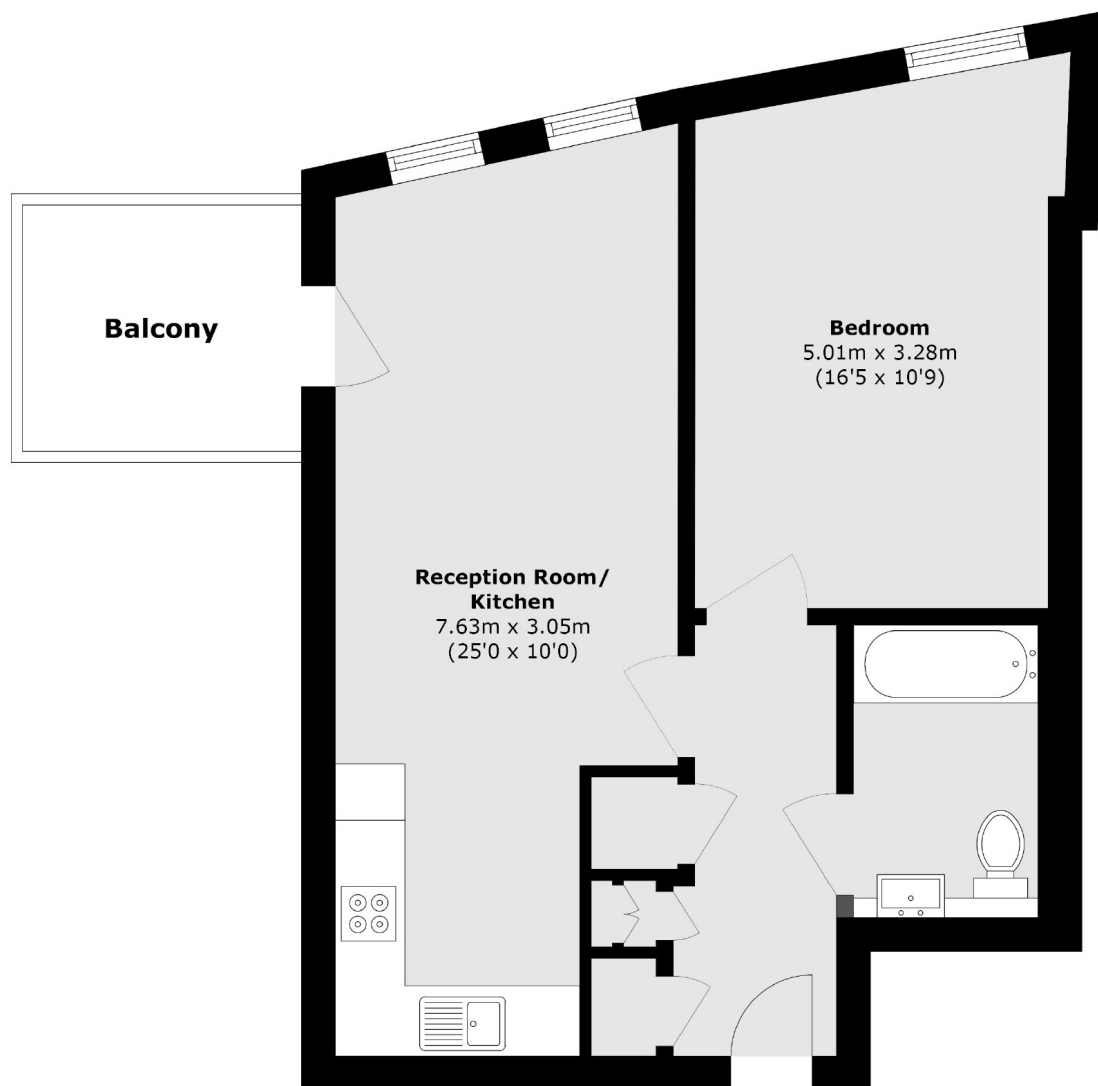
This beautifully presented modern apartment that is being sold chain-free, making it the perfect opportunity for a quick move. Residents enjoy exclusive access to a range of on-site amenities, including a 24-hour concierge and a two-level gym.

Transport links are excellent with the Jubilee line from North Greenwich station, DLR at Cutty Sark and mainline services from Maze Hill all offering regular services into central London. There are also a wide variety of shops, bars and restaurants in Greenwich Town centre (including the historic market) not forgetting the wide open spaces of Greenwich Park.

Features

- Private Balcony
- Chain Free
- Gym
- Modern
- Ideal First Purchase
- Sought After Location

Telegraph Avenue, London, SE10



Total area (approx.): 50.3 sq. m (541.4 sq. ft)

Balcony area (approx.): 5.4 sq. m (58.1 sq. ft)