



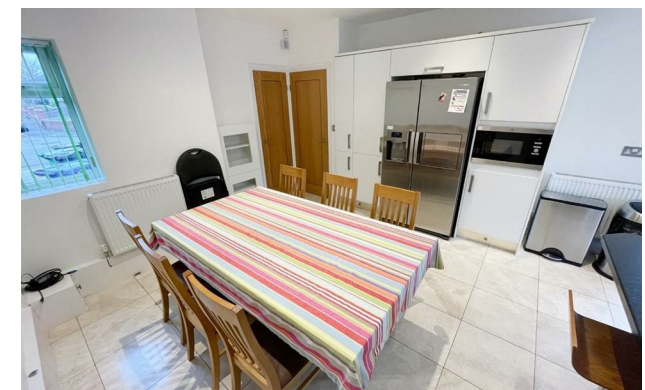
jordan fishwick

DIDSBURY
Kingsfield Drive



**Kingsfield Drive,
Didsbury, M20 6HU**

£2,100 Per Calendar Month



The Property

*** AVAILABLE MARCH *** A truly stunning, bay fronted, semidetached property that has been extended and modernised with considerable effect, the results of which now provide a superb home that is well presented with quality fittings throughout. Enjoying a popular residential location with parking and gardens, the home in brief comprises, to the ground floor; entrance porch, downstairs WC, entrance hall, two reception rooms, & the superb dining kitchen, whilst the first floor offers; three double bedrooms (Master En-Suite), a separate family bathroom and the great advantage of a study! Beautiful lawned front and rear gardens. Gardener inc. in the rental price and off-road parking provided. Offered on a furnished basis. To view please contact our Didsbury office.

View our Virtual Tour Here - <https://youtu.be/znuZgOFAn0Q>

EPC Rating - C / Council Tax Band C

Directions

M20 6HU



- Available March
- Three Double Bedrooms
- Two Bathrooms
- Furnished
- WC & Study
- Fantastic Family Home
- Great Location of Didsbury
- Large Garden & Parking
- Council Tax Band C
- EPC Rating C

Postcode - M20 6HU

EPC Rating - C

Floor Area - sq ft

Local Authority - Manchester City Council

Council Tax - C





These particulars are believed to be accurate but they are not guaranteed and do not form a contract. Neither Jordan Fishwick nor the vendor or lessor accept any responsibility in respect of these particulars, which are not intended to be statements or representations of fact and any intending purchaser or lessee must satisfy himself by inspection or otherwise as to the correctness of each of the statements contained in these particulars. Any floorplans on this brochure are for illustrative purposes only and are not necessarily to scale.

Offices also at: Wilmslow, Macclesfield, Hale, Sale, Chorlton, Glossop, Manchester & Salford

757-759 Wilmslow Road, Didsbury Village, Manchester

0161 445 4480

didsbury@jordanfishwick.co.uk
www.jordanfishwick.co.uk