



Guide Price
£500,000

Freehold

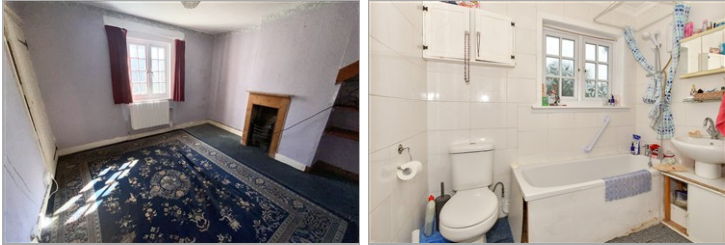
4x  2x  2x 

**Bysing Wood Cottages,
Bysing Wood Road,
Faversham, Kent, ME13**

OVER 60?

Secure this property
for up to **59% less!**

Wards
Helping you move forwards



Main features

- Delightful setting surrounded by local woodlands
- Good sized living accommodation, perfect for a growing family
- Popular primary school within walking distance
- Substantial rear garden with garage and plenty of parking
- No onward chain

Accommodation

GROUND FLOOR

Entrance Porch
 Entrance Lobby
 Lounge: 22'5 x 12'0 (6.84m x 3.66m)
 Dining Room: 14'0 x 10'11 (4.27m x 3.33m)
 Kitchen: 17'10 x 10'3 (5.44m x 3.13m)
 Shower Room
 Conservatory: 12'0 x 8'8 (3.66m x 2.64m)

FIRST FLOOR

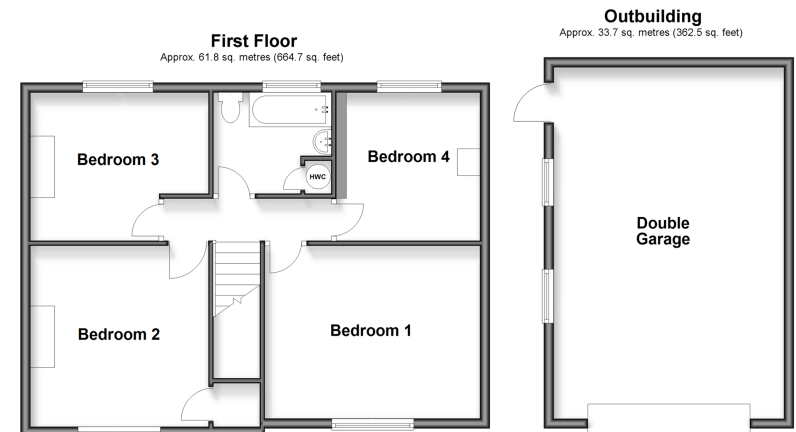
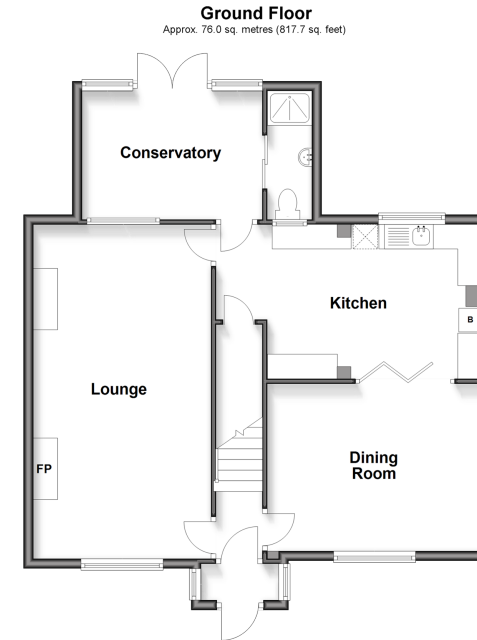
Landing
 Bedroom 1: 14'0 x 11'0 (4.27m x 3.36m)
 Bedroom 2: 12'0 x 12'0 (3.66m x 3.66m)
 Bedroom 3: 12'0 x 9'10 (3.66m x 3.00m)
 Bedroom 4: 10'5 x 8'10 (3.18m x 2.69m)
 Bathroom

OUTBUILDING

Double Garage

OUTSIDE

Front Garden
 Substantial Rear Garden
 Parking



Call Faversham - 01795 535517 ■ wardsofkent.co.uk

■ Through a Homewise Home For Life Plan people aged 60+ can secure this property for up to 59% less, by purchasing a Lifetime Lease



10832454/20260331/PJ/PJ