



Coleridge Gardens, SW10

£1,350,000

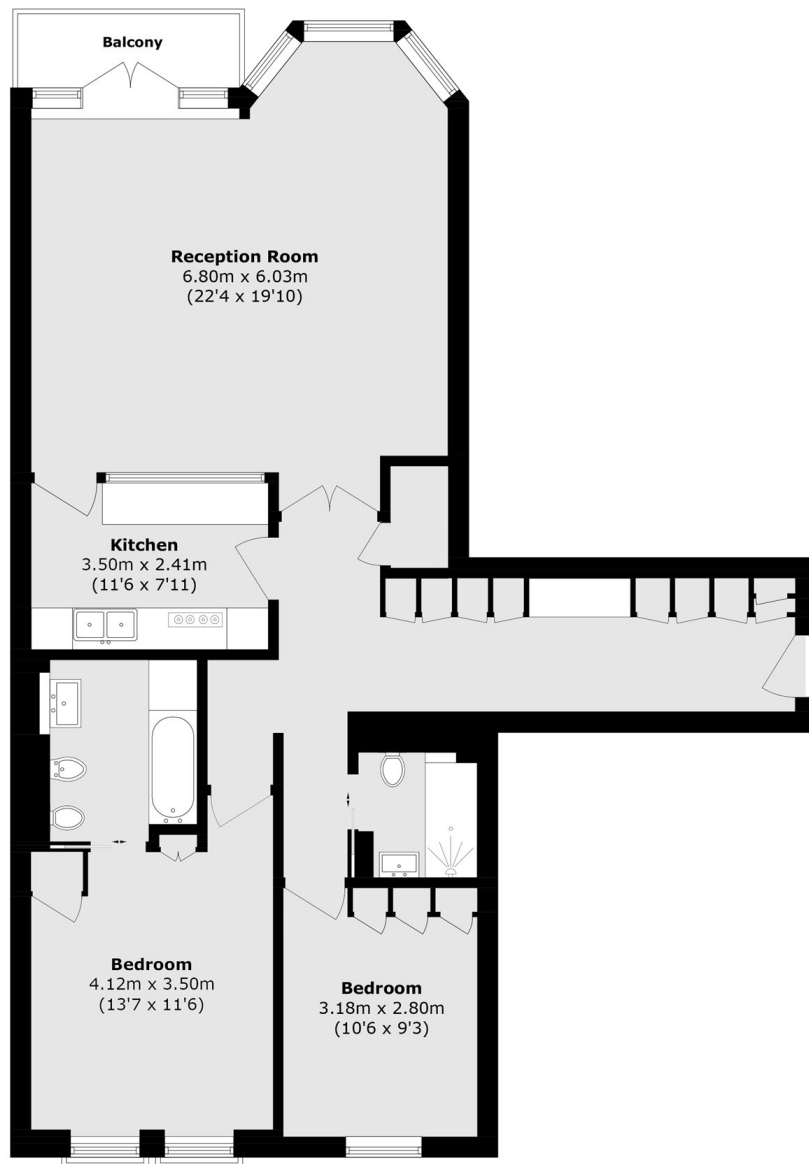
A second floor apartment boasting a reception room that overlooks well kept communal gardens. This property is in great condition throughout and has the added benefit of a balcony as well as a private parking space.

Coleridge Gardens is a private development boasting a gym, communal gardens and a swimming pool, ideally located between the King's Road and Fulham Road with shops, transport links and restaurants close by.

Features

- Balcony
- Lift
- Private Parking Space
- Gated Development
- 24 Hour Porter
- Communal Gardens

Coleridge Gardens, London, SW10



Second Floor

Total area (approx.): 104 sq. m (1119.8 sq. ft)

Dexters

Chelsea and Belgravia
45 Sloane Avenue
London
SW3 3DH
Sales
020 7590 9510

Energy Rating: . We aim to make our particulars both accurate and reliable. However they are not guaranteed; nor do they form part of an offer or contract. If you require clarification on any points then please contact us, especially if you're traveling some distance to view. Please note that appliances and heating systems have not been tested and therefore no warranties can be given as to their good working order.

 **RICS** | Regulated
Estate Agent
and Letting Agent

[dexters.co.uk](https://www.dexters.co.uk)