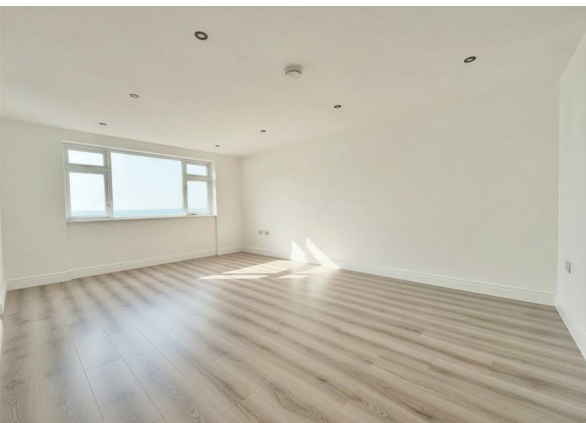


Ward Court, 65 Sea Front, Hayling Island, Hampshire, PO11 0AL

£1,250 Per month

EPC Rating: D Council Tax Band: C



## Ward Court, 65 Sea Front, Hayling Island, Hampshire, PO11 0AL

£1,250 Per month

Council Tax Band: C

Top-floor beachfront apartment with stunning views across The Solent. Spacious living room with balcony, three bedrooms, modern kitchen and large bathroom. Includes garage, parking, lift access and communal swimming pool. Moments from the beach, cafés and coastal walks.

Wake up to breathtaking sea views and the sound of the coast just moments from your door. This top-floor beachfront apartment offers a rare opportunity to live directly overlooking The Solent, with uninterrupted coastal views from both the living room and kitchen, all within a well-maintained development with lift access, private parking and a communal swimming pool.

The apartment offers bright and spacious accommodation throughout, beginning with a welcoming entrance hallway with useful storage. The main reception room is a fantastic living space, filled with natural light from a large window framing stunning views across the water. A door leads out onto a private balcony, providing the perfect spot to sit with a morning coffee or evening drink while enjoying the sea air and ever-changing coastal scenery.

The kitchen is positioned to take full advantage of the sea views and features a range of contemporary white wall and base units, a breakfast bar for casual dining, induction hob with extractor, built-in oven and space for additional appliances. The large window floods the room with natural light, creating a bright and practical cooking space.

There are three bedrooms, all well-proportioned and neutrally decorated, each with double-glazed windows, electric heating and modern downlighting. The third bedroom offers flexibility and could also serve as an ideal home office or study space.

The generous bathroom is well appointed and includes both a panel bath and a separate walk-in shower with glass screen, along with a wash basin with storage beneath, low-level WC, heated towel rail and modern tiling.

Residents benefit from a private garage, allocated parking and access to a communal swimming pool which is open during the summer months — perfect for enjoying the coastal lifestyle. The building also offers secure entry and lift access to the top floor.

Located just a short walk from the beach, local cafés, shops and beautiful coastal paths, the apartment also benefits from convenient bus routes to Havant and surrounding areas. This property offers an exceptional seaside lifestyle and would suit professionals, downsizers or anyone looking to enjoy coastal living in a sought-after waterfront setting.

Please note: pets are not permitted within the building or grounds.



