

Goldhawk Road, W6

£465,000

Dexters are proud to present this spacious two bedroom purpose built flat in 1930's mansions block in Stamford Court.

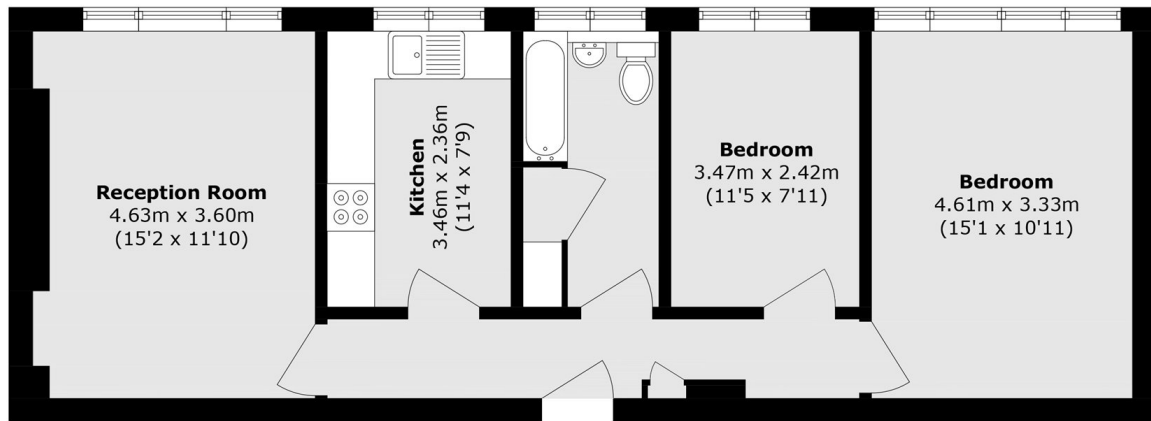
The property benefits from two large bedrooms a separate kitchen and in a very sought after location. The property is on the fourth floor with a south facing aspect. This flat has been very well maintained and benefits from private parking, communal grounds, on-site porter, residents lifts and offered chain free. The service charges also cover your hot water and heating.

Ideally positioned moments from Stamford Brook Station, Ravenscourt Park aswell as the array of amenities on King Street & Chiswick High Road as well as being a short distance from the River Thames with its riverside walks and pubs.

Features

- Two Bedrooms
- Well Maintained
- Private Parking
- Close To Transport
- Stamford Brook
- Chain Free

Goldhawk Road, London, W6



Total area (approx.): 63.8 sq. m (686.7 sq. ft)