

# Lyndale, Stevenage, Hertfordshire, SG1 1UB

£1,950 PCM

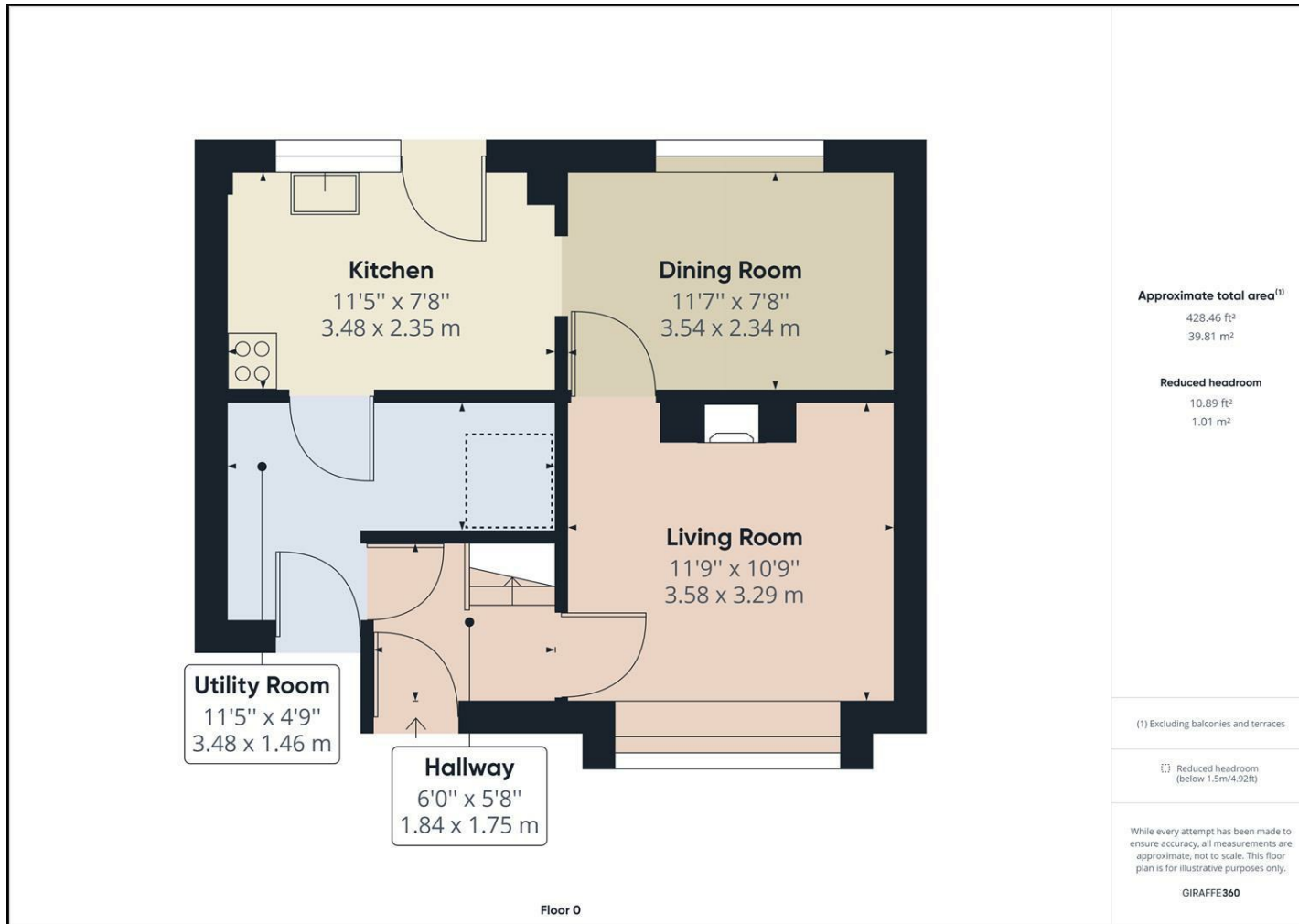


**\*\*DON'T MISS OUT FACETIME/SKYPE VIEWINGS AVAILABLE\*\* \*\*GSK INTERNSHIPS\*\***  
 Three bedroom shared house located in the Monkwood area of Stevenage only 0.4 miles from Stevenage Town Centre. Set up for sharers and ideal for interns at GSK, AIRBUS and MBDA. Offered furnished with white goods and available from the 28th August 2026. Call Homes and Mortgages today on 01438 728 444 to arrange your viewing.



86 High Street  
 Stevenage  
 Hertfordshire  
 SG1 3DW  
 01438 728444

[stevenage@homesandmortgages.co.uk](mailto:stevenage@homesandmortgages.co.uk)



**Energy Efficiency Rating**

	Current	Potential
Very energy efficient - lower running costs		
(92 plus) <b>A</b>		
(81-91) <b>B</b>		<b>86</b>
(69-80) <b>C</b>	<b>70</b>	
(55-68) <b>D</b>		
(39-54) <b>E</b>		
(21-38) <b>F</b>		
(1-20) <b>G</b>		
Not energy efficient - higher running costs		
<b>England &amp; Wales</b>	EU Directive 2002/91/EC	