



DERRICK GARDENS, SE7

£400,000

Flat
Two bedrooms
One reception room
One bathroom
Private garden
Energy rating: C

@marshandparsons
marshandparsons.co.uk

MARSH &
PARSONS



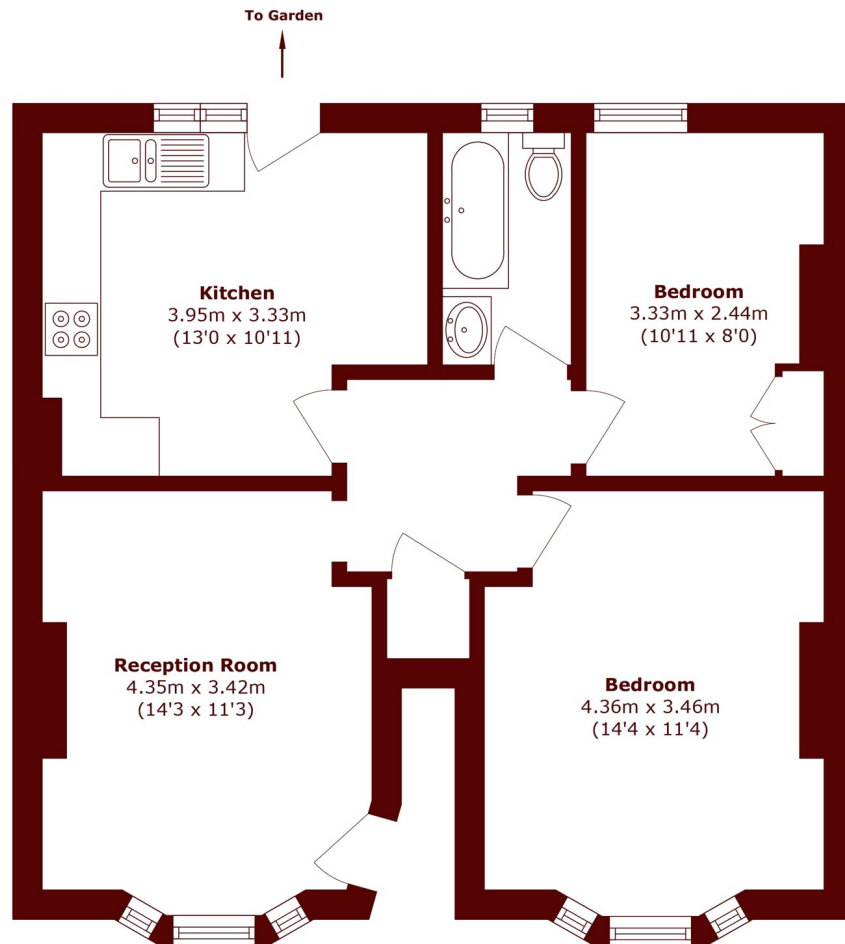
ABOUT THE PROPERTY

This bright and spacious Edwardian ground floor flat offers two double bedrooms and is the perfect first time purchase. The property benefits from ample storage, two generously sized double bedrooms, a separate living room, and a large kitchen. You also have direct access to your own private reception room. Convenient shopping facilities are just a short walk away.

This property is only a short walk to Charlton railway station which benefit from frequent trains into the City, providing direct access to London Bridge and Cannon Street via the Southeastern service and Blackfriars, Farringdon, and London St Pancras via the Thameslink service.



STEP INSIDE DERRICK GARDENS



Total area (approx.): 60.0 sq. m (645.8 sq. ft)

Charlton
020 8293 0454

Energy Rating: C We aim to make our particulars both accurate and reliable. However, they are not guaranteed; nor do they form part of an offer or contract. If you require clarification on any points then please contact us, especially if you're traveling some distance to view. Please note that appliances and heating systems have not been tested and therefore no warranties can be given as to their good working order

**MARSH &
PARSONS**