

# Frank Harris & Co.



**Swinton Street, WC1X**

**£325,000**

Introducing this large, lower ground floor studio located in a period conversion on Swinton Street. Benefiting from low service charge, no onward chain and rear terrace.

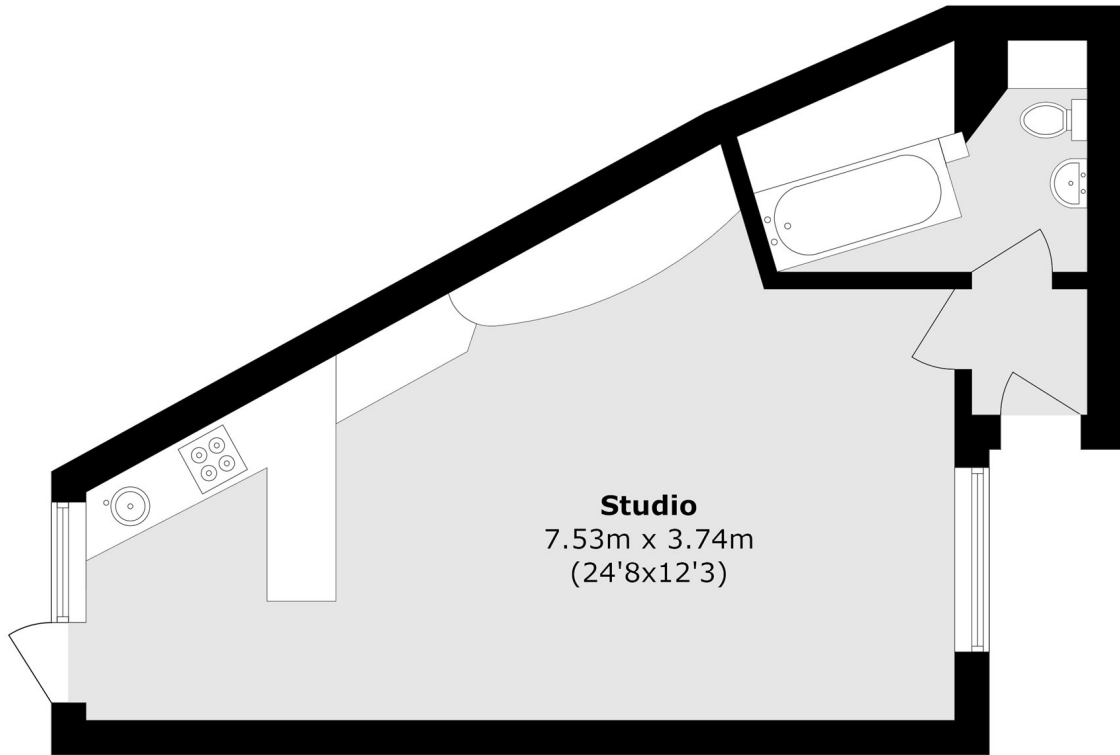


Moments from King's Cross and St Pancras stations. Covent Garden, the West End and various local parks are within easy walking distance.

- Period Property • Long Lease • Resident Parking Bays •
- Rear Terrace • Low Service Charge • Share of Freehold •



# Frank Harris & Co.



Total area (approx.): 33.6 sq. m (361.6 sq. ft)

Frank Harris & Co. Bloomsbury and Kings Cross  
81 Marchmont Street,  
London, WC1N 1AL  
020 7405 4444  
bloomsburysales@frankharris.co.uk

Energy Rating: . We aim to make our particulars both accurate and reliable. However they are not guaranteed; nor do they form part of an offer or contract. If you require clarification on any points then please contact us, especially if you're traveling some distance to view. Please note that appliances and heating systems have not been tested and therefore no warranties can be given as to their good working order.

