



**Connells**

Bridgewater Close  
Brooklands MILTON KEYNES



# Bridgewater Close Brooklands MILTON KEYNES MK10 7JH

for sale fixed price  
**£265,000**



## Property Description

**LOW-COST HOME!!** This end of terraced home is offered under the sought after fixed equity scheme with a 20% discount. There is no rent or service charge payable. In brief to comprise of entrance hall, lounge area, kitchen area, wc, two double bedrooms, family bathroom, two allocated parking spaces in front of the property, front and rear gardens. CALL Connells today to enquire about the scheme!

## Entrance Hall

Double glazed door to front aspect, radiator, door to lounge area. Stairs to first floor accommodation.

## Lounge Area

10' 2" x 13' 9" ( 3.10m x 4.19m )  
Double Glazed window to front and side aspect. Wall mounted radiator.

## Kitchen Area

9' 1" x 12' 7" ( 2.77m x 3.84m )  
A fitted kitchen to comprise of low- & high-level units with work surface over. Integrated Fridge Freezer, Integrated dish washer, Integrated, Washing Machine, sink drainer unit, part tiled, Wall mounted boiler. Double glazed window to rear aspect, tiled flooring, and door to rear lobby.

## Rear Lobby

Door to garden and door to cloak room.

## Cloak Room

A two-piece suite to comprise of low level wc and wash hand basin with splashback tilling. Extractor fan.

## First Floor Landing

Doors to all rooms and family bathroom and airing cupboard.

## Bedroom One

10' 2" max x 13' 7" max ( 3.10m max x 4.14m max )  
Double glazed windows to front aspect, radiator and storage cupboard.

## Bedroom Two

13' 7" max x 11' 2" max ( 4.14m max x 3.40m max )  
Wall mounted radiator. Double glazed window to rear aspect.

## Family Bathroom

A tree piece suite to comprise of single panel bath with shower over, low level wc , wash hand basin, part tiled, and double-glazed window to side aspect.

## Outside

## Parking

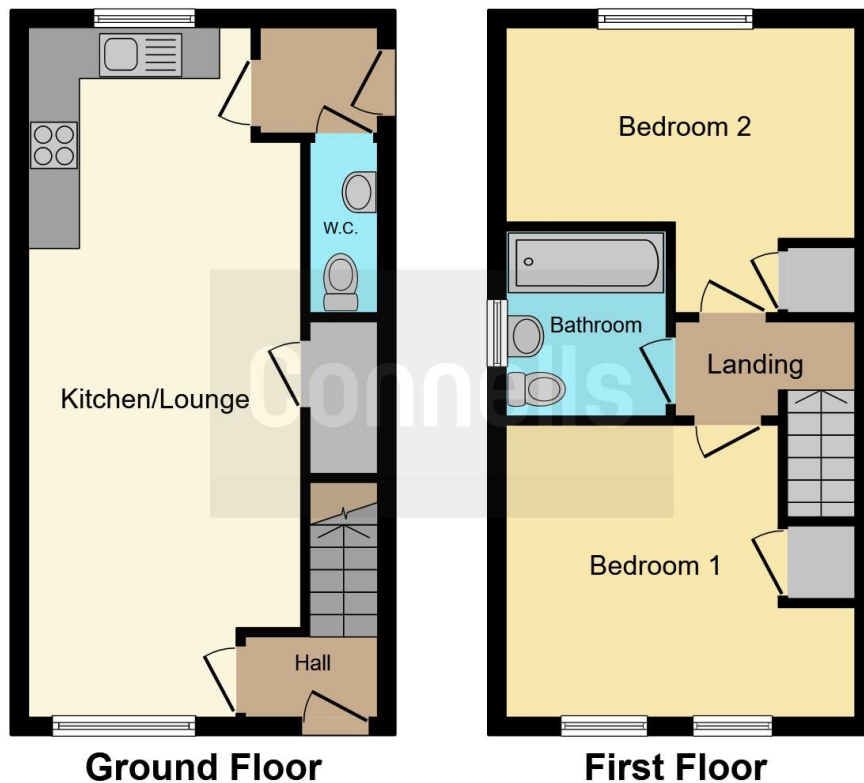
Allocated parking for two cars.

## Rear Garden

Mainly laid to lawn with patio area, and wooden panel fence surround.







This floor plan is for illustrative purposes only. It is not drawn to scale. Any measurements, floor areas (including any total floor area), openings and orientation are approximate. No details are guaranteed, they cannot be relied upon for any purpose and they do not form part of any agreement. No liability is taken for any error, omission or misstatement. A party must rely upon its own inspection(s). Powered by [www.focalagent.com](http://www.focalagent.com)

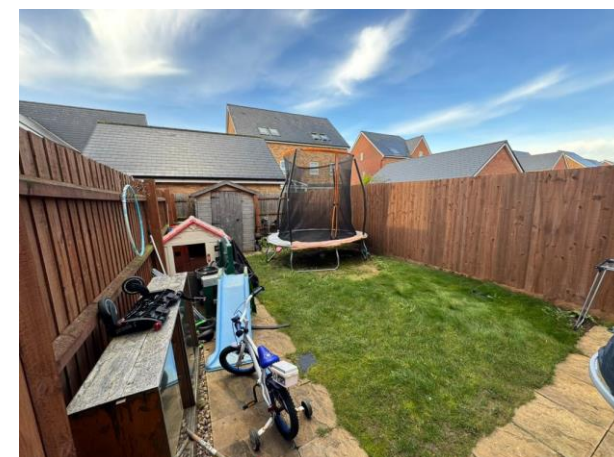
To view this property please contact Connells on

**T 01908 691606**  
**E [walnuttree@connells.co.uk](mailto:walnuttree@connells.co.uk)**

26A Fyfield Barrow The Walnut Tree Local Centre Walnut Tree

EPC Rating: B Council Tax Band: C

**view this property online [connells.co.uk/Property/WNT307222](http://connells.co.uk/Property/WNT307222)**



Tenure: Freehold



1. MONEY LAUNDERING REGULATIONS Intending purchasers will be asked to produce identification documentation at a later stage and we would ask for your co-operation in order that there will be no delay in agreeing the sale. 2. These particulars do not constitute part or all of an offer or contract. 3. The measurements indicated are supplied for guidance only and as such must be considered incorrect. Potential buyers are advised to recheck measurements before committing to any expense. 4. We have not tested any apparatus, equipment, fixtures, fittings or services and it is in the buyers interest to check the working condition of any appliances.

Connells Residential is registered in England and Wales under company number 1489613, Registered Office is Cumbria House, 16-20 Hockliffe Street, Leighton Buzzard, Bedfordshire, LU7 1GN. VAT Registration Number is 500 2481 05.

**See all our properties at [www.connells.co.uk](http://www.connells.co.uk) | [www.rightmove.co.uk](http://www.rightmove.co.uk) | [www.zoopla.co.uk](http://www.zoopla.co.uk)**

Property Ref: WNT307222 - 0003