



DRAYCOTT PLACE LONDON SW3
£575 PER WEEK AVAILABLE 08/07/2026

Hamptons
THE HOME EXPERTS

{ THE PARTICULARS

Draycott Place London SW3

£575 Per Week
Furnished

 1 Bathroom
 1 Reception

Features

- One Bathroom, - Private entrance, -
Wooden flooring, - Furnished, - Council Tax
Band E, - 347 Squared Feet, - Available
Now

Council Tax

Council Tax Band E

Hamptons
7 Lower Sloane Street
Sloane Square, London, SW1W 8AH
020 7824 8242
sloanesquarelettings@hamptons.co.uk
www.hamptons.co.uk

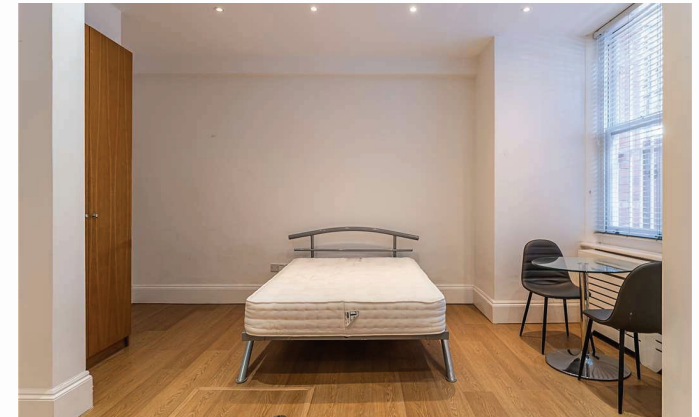
{ FANTASTIC STUDIO FLAT IN HEART OF SLOANE SQUARE.

The Property

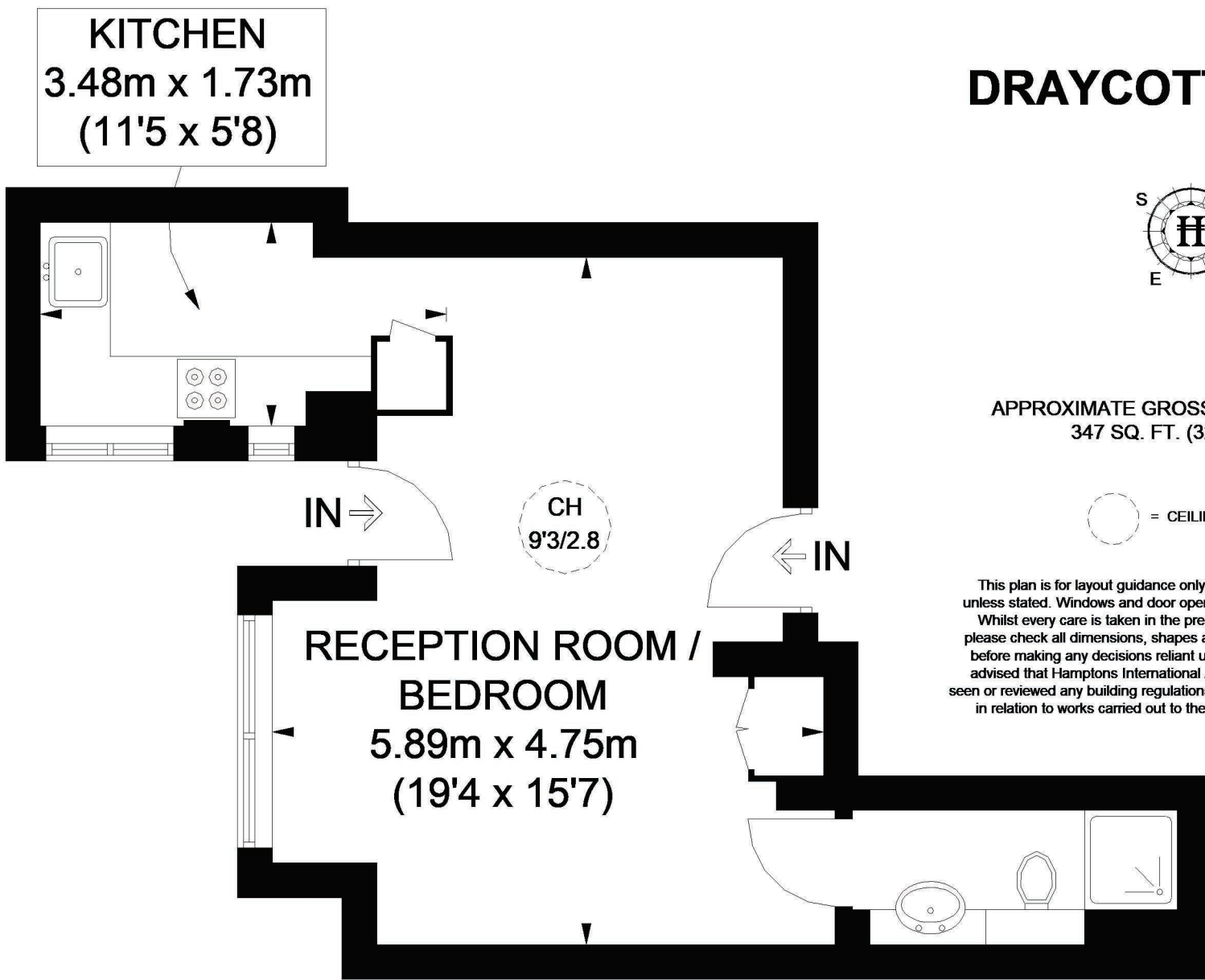
A fantastic studio flat located on Draycott Place moments from Sloane Square with wood floors. The property has high ceilings, own entrance and offers well arranged space with the kitchen area tucked away off the studio reception area. This larger than average studio offers 347 squared feet of living space with a separate bed, two seat sofa and further space for a dining table or work station should this be required. With wooden flooring throughout and a high quality finish, this is a perfect studio flat in the heart of Sloane Square.

Location

Draycott Place is a pretty residential address tucked away from the many bustling shops, bars and restaurants along King's Road with South Kensington and Knightsbridge also within close proximity. Sloane Square is 0.3 miles away offering the Circle & District Lines and South Kensington, offering the same and to include the Piccadilly Line is 0.6 miles away with easy access to London's Museums on Exhibition Road.



DRAYCOTT PLACE



LOWER GROUND FLOOR

For Clarification

We wish to inform prospective tenants that we have prepared these particulars as a general guide and they have been confirmed as accurate by the landlord. We have not verified permissions, nor carried out a survey, tested the services, appliances and specific fittings. Room sizes are approximate and measurement figures rounded: they are taken between internal wall surfaces and therefore include cupboards/shelves, etc. Accordingly, they should not be relied upon for

carpets and furnishings. It should also be noted that all fixtures and fittings, carpeted, curtains/blinds, kitchen equipment and garden statuary, whether fitted or not, are deemed removable by the landlord unless specifically itemised with these particulars. Please enquire in office or on our website for details on holding deposit and tenancy deposit figures.

Energy Efficiency Rating		Current	Potential
Band A	92-100		
Band B	81-91		
Band C	69-80		
Band D	55-68	63	71
Band E	39-54		
Band F	13-38		
Band G	1-12		

England & Wales EU Directive 2002/91/EC

