



Sawley Road, Shepherds Bush, London
£750,000

Sawley Road, Shepherds Bush, London

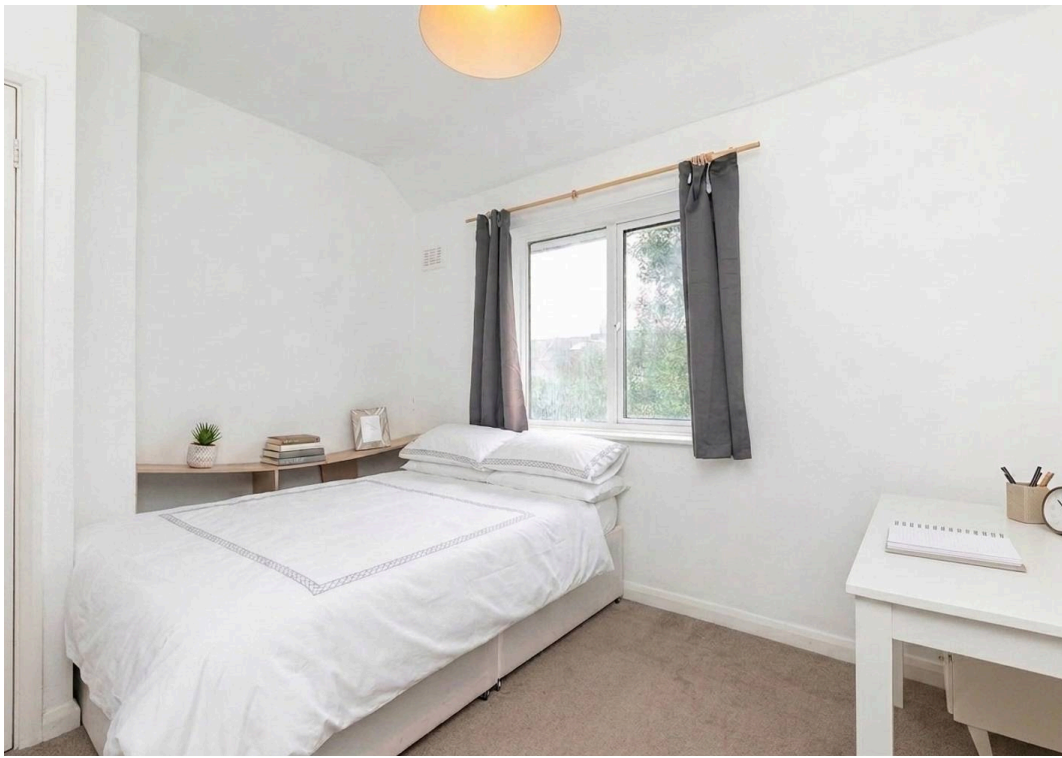
A rare and exciting opportunity to acquire this substantial freehold property situated on the sought-after Sawley Road in Shepherd's Bush, W12. Offering an abundance of space and flexibility, this impressive home is arranged over two levels and presents potential for both investors and owner-occupiers.

The property currently comprises four generously sized double bedrooms, all offering excellent proportions and two well-appointed bathrooms. At the heart of the home is a large, bright open-plan reception area, creating a versatile living and entertaining space.

One of the standout features of this property is its exceptional outdoor space. To the front, a sizeable garden and to the rear, a substantial private garden offers a peaceful retreat—ideal for entertaining and family use.

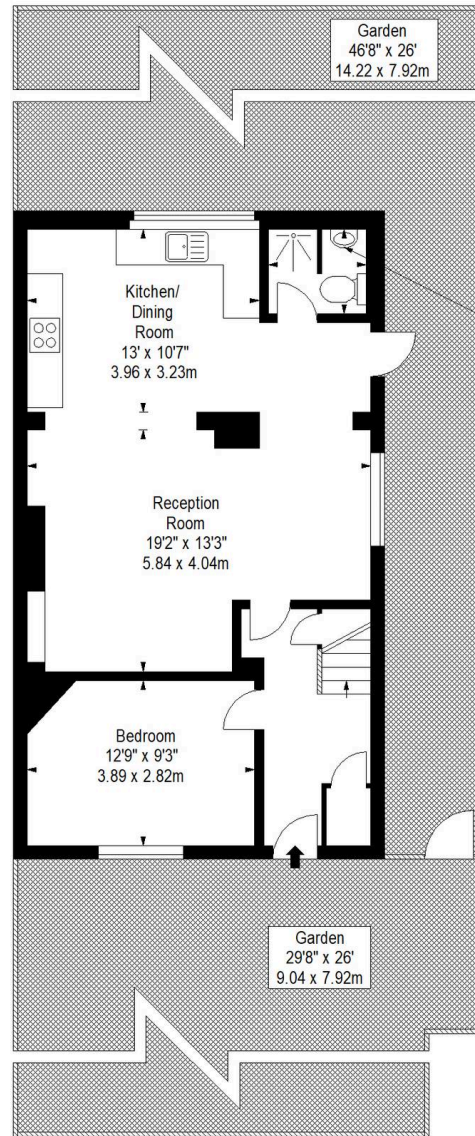
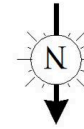
Combining generous proportions, outdoor space, and significant potential, this is a property that must be seen to be fully appreciated. Early viewing is highly recommended.



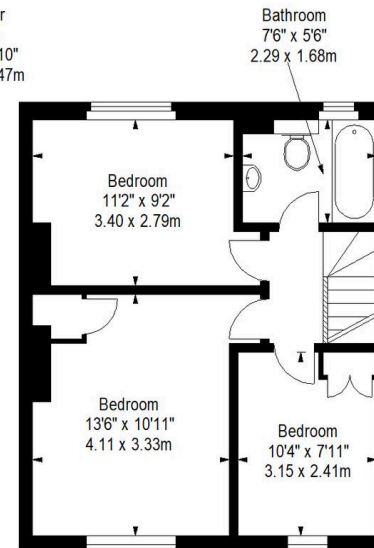


Sawley Road, W12

Approx. Gross Internal Area *
1111 Ft² - 103.21 M²



Ground Floor



First Floor

Every attempt has been made to ensure the accuracy of this floor plan however, measurements are approximate and for illustration purposes only. Measured in accordance with the RICS code of measuring practice. Not to scale



Black Katz

22 West Hampstead Mews, London - NW6 3BB

02073285000 • Thomas@blackkatz.com • blackkatz.com/