



Ambrose House, Circus West Village | £1,725,000





Ambrose House, Circus West Village

A one-of-a-kind apartment with breathtaking views of the river, the London skyline and the iconic Battersea Power Station.

This spacious 2-bedroom, 2-bathroom apartment in Ambrose House is one of the most exciting opportunities to hit the market this year.

Spanning 1,136sqft including its large terrace, it has a spacious open plan kitchen-living room, two well-proportioned bedrooms with inbuilt storage, one ensuite and a guest bathroom.

Its fully equipped kitchen has a breakfast bar connecting the dining area and the living room which itself flows seamlessly onto the terrace providing a fabulous entertaining space where you can enjoy stunning views across the Power Station, river and city beyond, with the park just below.

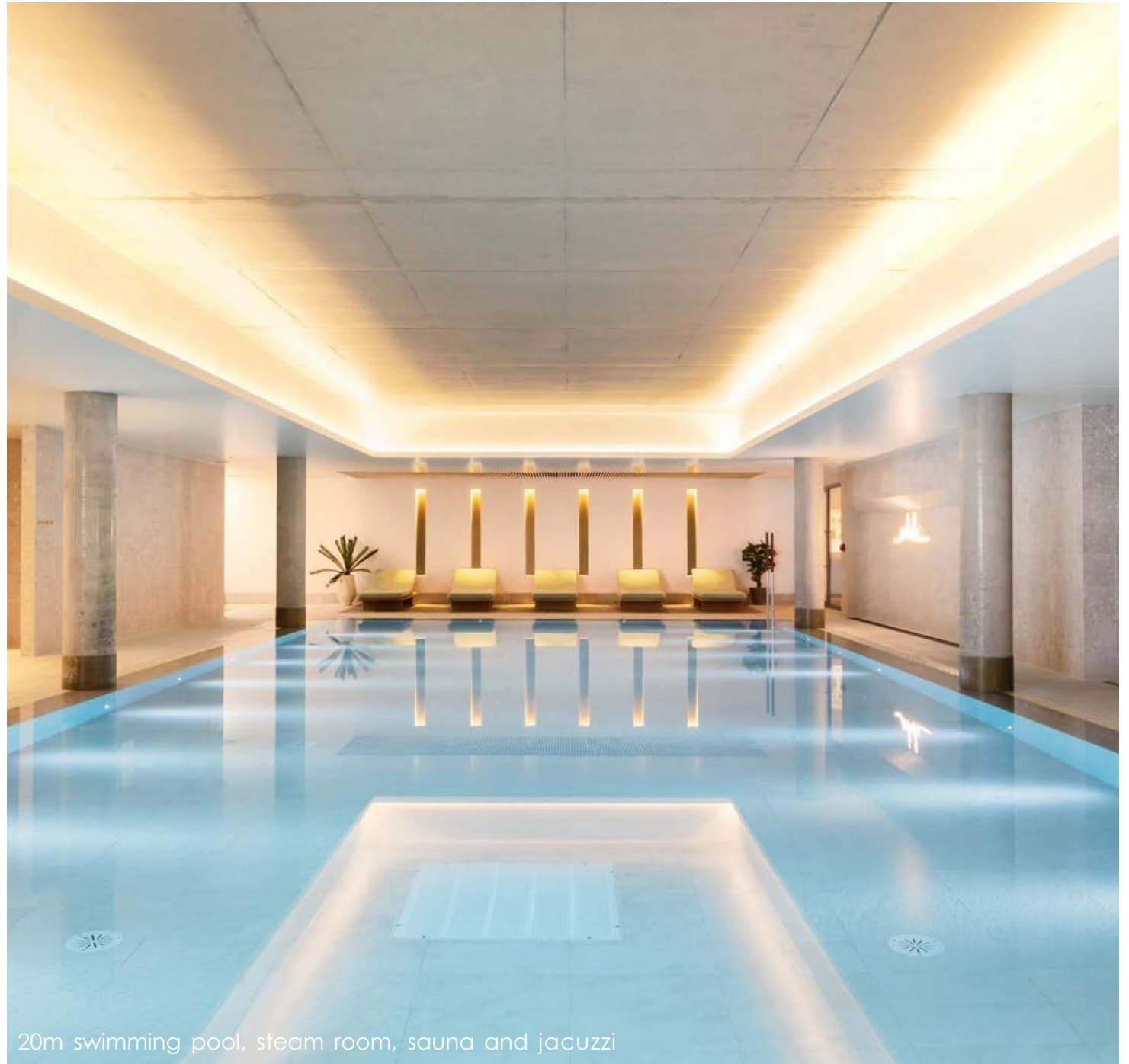
The property includes a parking space.

The property is ideally positioned in the heart of this iconic riverside development, where residents have access to a range of world-class amenities, including 24hr concierge, gym, pool and spa, lounges, meetings room and workspace and cinema, as well as access to hundreds of cafes, restaurants, bars and shops.





Amenities



20m swimming pool, steam room, sauna and jacuzzi

Circus West Village, Battersea Power Station

Bedrooms: 2
Bathrooms: 2

Internal Area: 924 sqft / 86 sqm
Outdoor Space: Terrace
Outdoor Area: 212 sqft / 20 sqm

Total Area: 1,136 sqft / 106 sqm

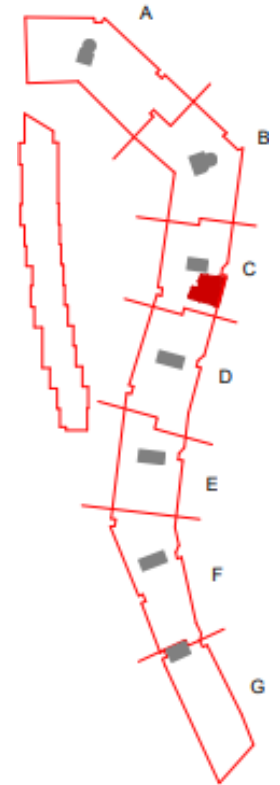
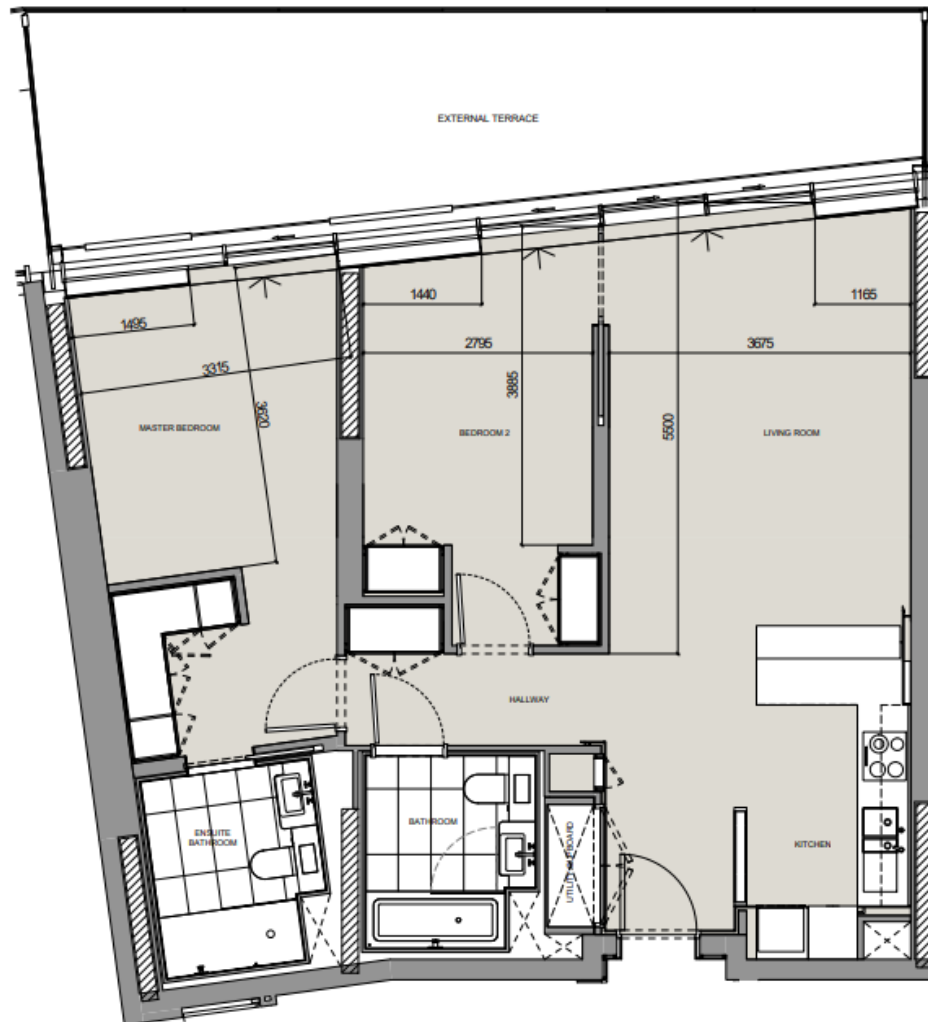
Location: Circus West Village
Floor: 13
View: River / Power Station

Parking: Yes
Storage: No

Swimming Pool/ Gym Facilities
Residents Lounge
24/7 Concierge & Security

EPC Rating: C
Leasehold: 986 years
remaining

Local Authority: London Borough of Wandsworth
Council Tax Band: F
Service Charge + Buildings Insurance : Est. £11,400
per annum
Reference: L-001164



020 3930 4194 | sales@bpsdc.co.uk

Sales & Lettings Suite, 44 Electric Boulevard, Battersea Power Station, London SW11 8BJ

