



Price
£325,000

Freehold

3x  1x  1x 

**Liverpool Road,
Walmer, Deal, Kent,
CT14**

Wards
Helping you move forwards



Main features

- Sought after location overlooking Marke Wood Park
- A stones throw to the beach and walking distance to town
- Offered chain free
- Single garage en block to rear
- Enclosed rear garden and shed with power

Accommodation

GROUND FLOOR

Entrance Hallway
 Lounge: 17'8 x 12'0 (5.39m x 3.66m)
 Kitchen/Diner : 15'3 x 8'1 (4.65m x 2.47m)

FIRST FLOOR

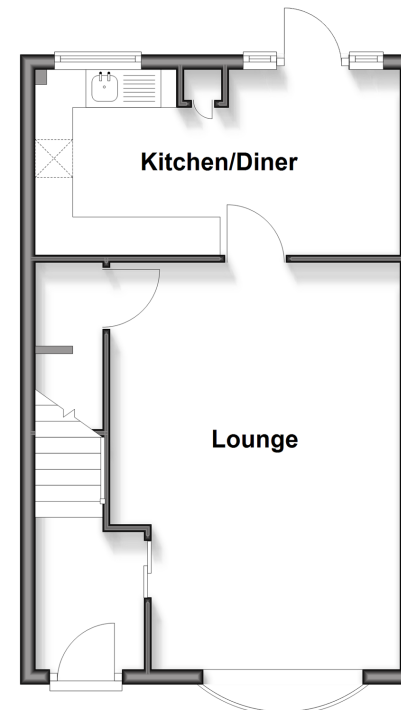
Landing
 Bathroom
 Bedroom 2: 9'7 x 8'5 (2.92m x 2.57m)
 Bedroom 1: 13'9 x 9'0 (4.19m x 2.75m)
 Bedroom 3: 10'4 x 5'11 (3.15m x 1.80m)

OUTSIDE

Front and Rear Gardens

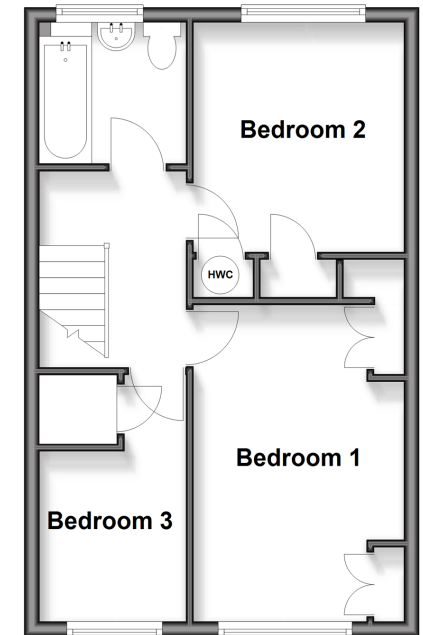
Ground Floor

Approx. 38.9 sq. metres (418.5 sq. feet)



First Floor

Approx. 38.5 sq. metres (414.5 sq. feet)



Call Deal - 01304 361420 ■ wardsofkennt.co.uk

■ Legal advice should be taken to verify fixtures/fittings, planning, alterations and/or lease details

■ Appliances & services are untested, dimensions are approximate and floor plans are not to scale



10635391/20251206/BG/LB1