



29 Parker Crescent, Ormskirk

Ormskirk

Guide Price £220,000

29 Parker Crescent

Ormskirk

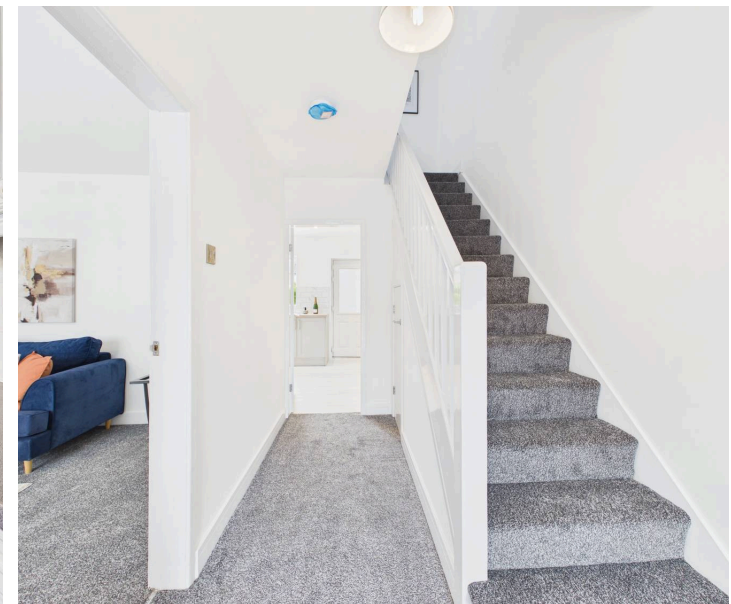
Beautifully renovated three-bed mid-terrace with driveway, modern kitchen diner, utility, stylish bathroom, private garden and new fittings throughout. Ready to move in. Approx. 1,018 sq ft. Council Tax band: B

Tenure: Freehold

EPC Energy Efficiency Rating: D

EPC Environmental Impact Rating: D

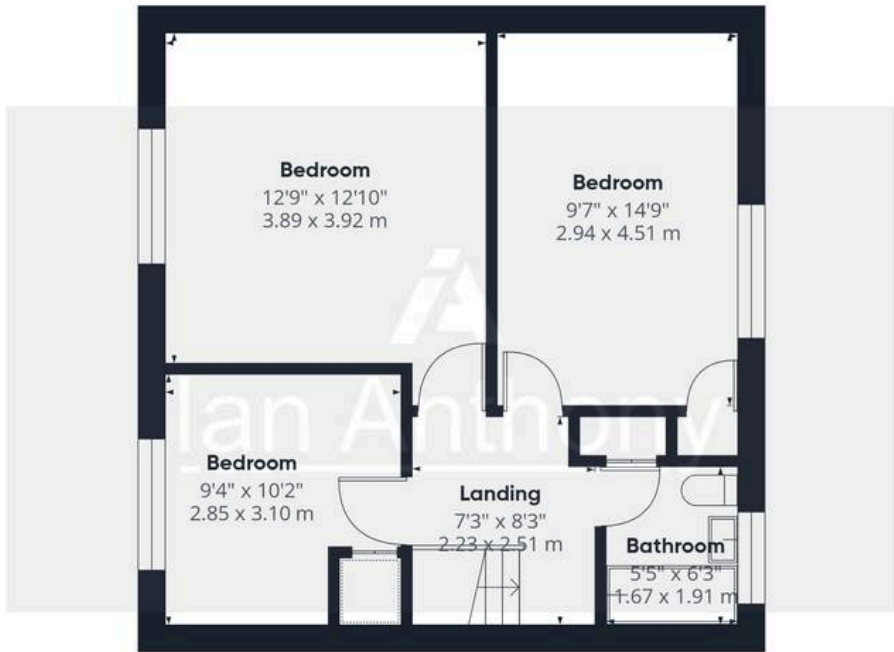
- Three Bedroom Mid-Terrace Home
- Approx. 1,018 sq ft
- Renovated Throughout
- Modern Kitchen Diner
- Utility Room
- Viewing Highly Recommended







Ground Floor



Floor 1



Approximate total area⁽¹⁾

1018 ft²

94.7 m²

(1) Excluding balconies and terraces

Calculations reference the RICS IPMS 3C standard. Measurements are approximate and not to scale. This floor plan is intended for illustration only.

GIRAFFE360



IAN ANTHONY

5 Burscough Street, Ormskirk - L39 2EG

01695580888

enquiries@iananthonyestates.co.uk

iananthonyestates.co.uk/

