



Guide Price
£475,000

Freehold

3x  1x  2x 

Fairhaven Avenue,
Shirley, Croydon,
Surrey, CR0

OVER 60?

Secure this property
for up to **59% less!**

cubitt & west
Helping you move forwards



Main features

- Splendid mid-terrace house in the heart of Shirley
- Open-plan lounge and dining area ensure entertaining guests is easy
- Garage as well as front and rear gardens
- Excellent transport links
- Situated close to amenities and many reputable schools

Accommodation

GROUND FLOOR

Entrance Hall

Lounge: 13'5 x 11'0 (4.09m x 3.36m)

Dining Area: 12'8 x 10'0 (3.86m x 3.05m)

Kitchen: 11'6 x 6'8 (3.51m x 2.03m)

FIRST FLOOR

Landing

Bedroom 1: 13'4 x 10'4 (4.07m x 3.15m)

Bedroom 2: 12'2 x 10'3 (3.71m x 3.13m)

Bedroom 3: 8'1 x 6'4 (2.47m x 1.93m)

Bathroom

OUTSIDE

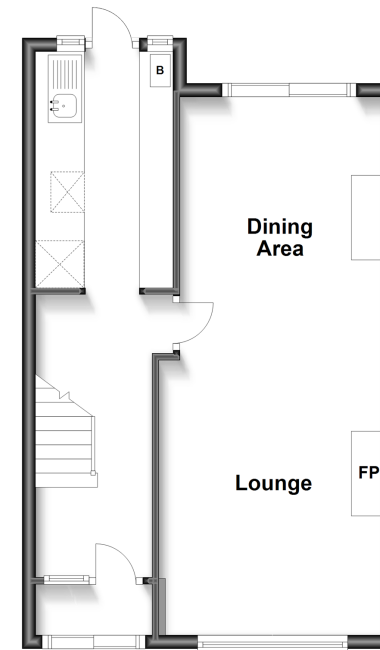
Front Garden

Garage

Rear Garden

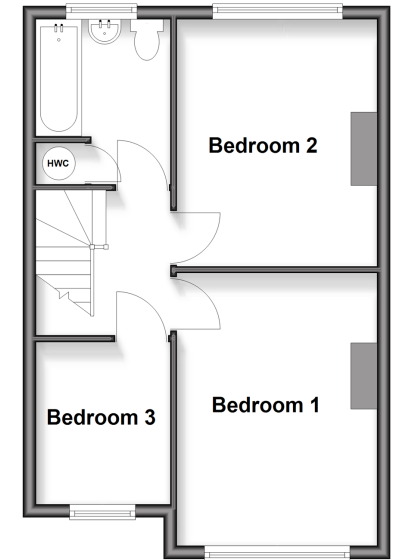
Ground Floor

Approx. 42.8 sq. metres (460.6 sq. feet)



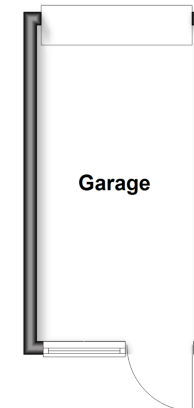
First Floor

Approx. 40.1 sq. metres (431.4 sq. feet)



Outbuilding

Approx. 11.9 sq. metres (127.9 sq. feet)



Call Shirley - 020 8654 3037 ■ cubittandwest.co.uk

■ Through a Homewise Home For Life Plan people aged 60+ can secure this property for up to 59% less, by purchasing a Lifetime Lease



21710737/20260509/GG/MS