



The Marlowes

St John's Wood, NW8

£11,266.67 per month
(£2,600.00 per week)

A newly refurbished five bedroom townhouse, set in a quiet residential cul-de-sac, with a private rear garden and double driveway.

CHESTERTONS



The Marlowes

St John's Wood, NW8

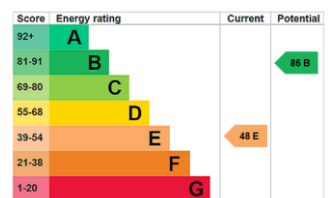
- Family Terraced House
- 5 Bedrooms, 2.5 Bathrooms
- Modern, Garden, Parking
- Close to St John's Wood



A newly refurbished five bedroom townhouse, set in a quiet residential cul-de-sac, with a private rear garden and double driveway, and within close proximity of ASL and St John's Wood Amenities.

The property comprises large open plan kitchen / reception room with double doors leading to the garden, a further two reception rooms, separate WC, five bedrooms and two bathrooms (one ensuite).

Minimum Term: 12 months
Deposit Required: £15,600.00
Local Authority: City Of Westminster
Council Tax Band: H
EPC Rating: E
Unfurnished



Chestertons St John's Wood Lettings

105 St. John's Wood Terrace
 London
 NW8 6PL
 stjohslettingsusers@chestertons.co.uk
 02030408622
 chestertons.co.uk

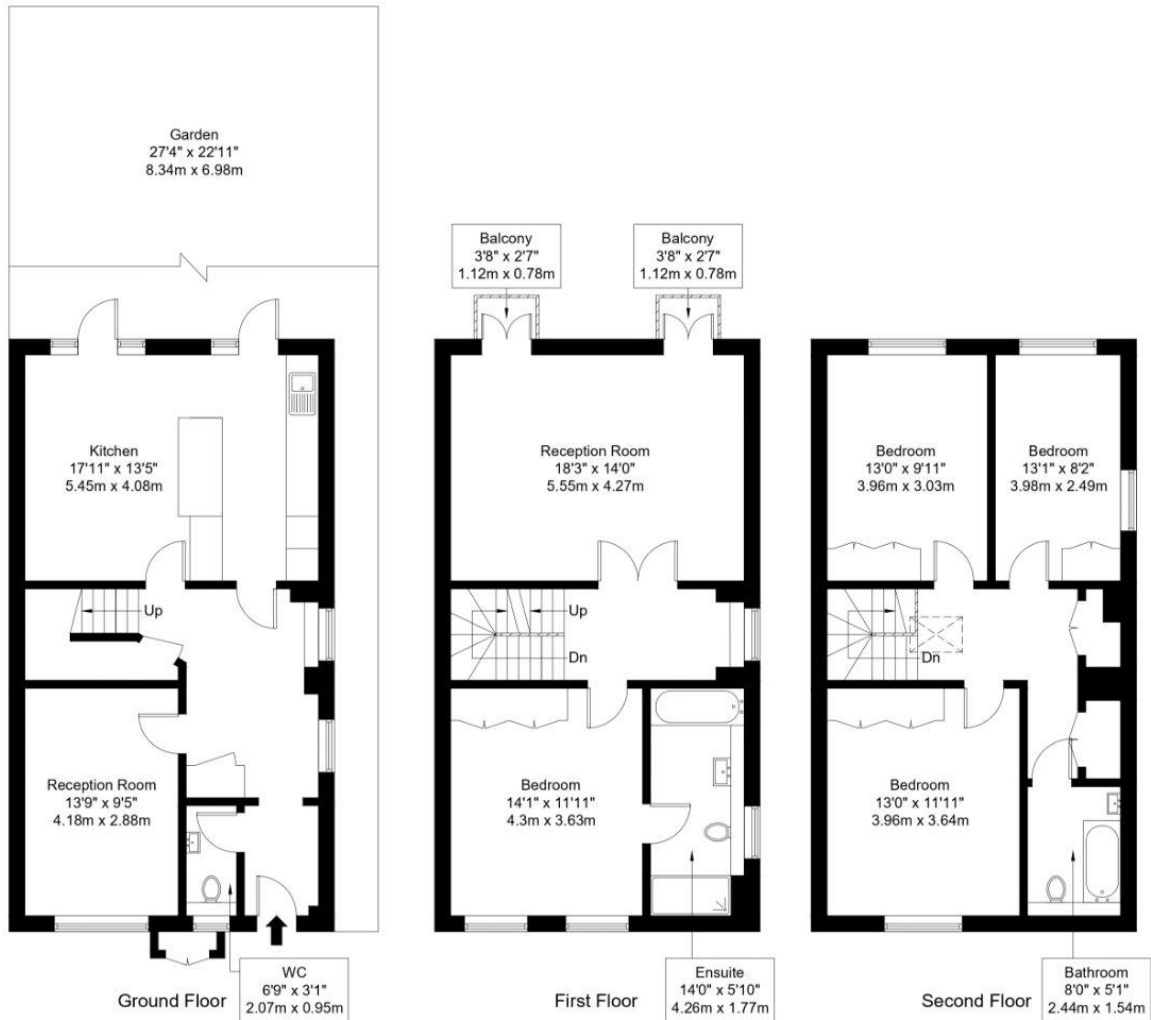
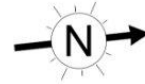
Additional tenant charges apply (fees apply to non-AST tenancies only)
 Tenancy Agreement Fee: £300
 References per Tenant/Guarantor: £60
 Inventory check (approx. £100 – £250 inc. VAT)
 chestertons.co.uk/property-to-rent/applicable-fees

The Marlowes, NW8 6NA

Approx Gross Internal Area = 176.5 sq m / 1900 sq ft

Balconies = 1.8 sq m / 19 sq ft

Total = 178.3 sq m / 1919 sq ft



Ref :

Copyright **BLEU PLAN**

The Floor plan is not to scale and measurements and areas shown are approximate and therefore should be used for illustrative purposes only. The plan has been prepared in accordance with the RICS code of Measuring Practice and whilst we have confidence in the information produced it must not be relied on. Maximum lengths and widths are represented on the floor plan. If there is any aspect of particular importance, you should carry out or commission your own inspection of the property.
Copyright © BleuPlan

