



**POOLE
TOWNSEND**

Marton Close, Dalton-In-Furness, LA15 8XL

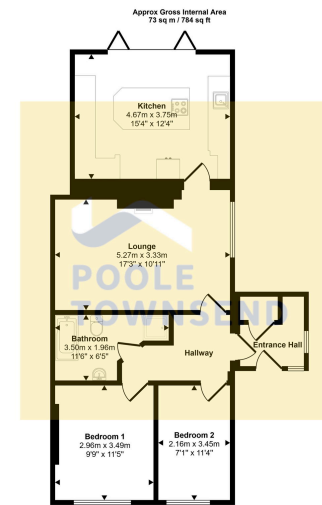
£265,000

2 1 1



- Semi Detached Bungalow
- Two Double Bedrooms
- 4 Piece Modern Bathroom
- Spacious Kitchen With Extension And Bi-Folding Doors
- Generous Lounge
- Private Driveway And an EV Charging Point
- Stylish And Modern Property
- Council Tax Band B
- GCH / DG Throughout
- NO UPPER CHAIN

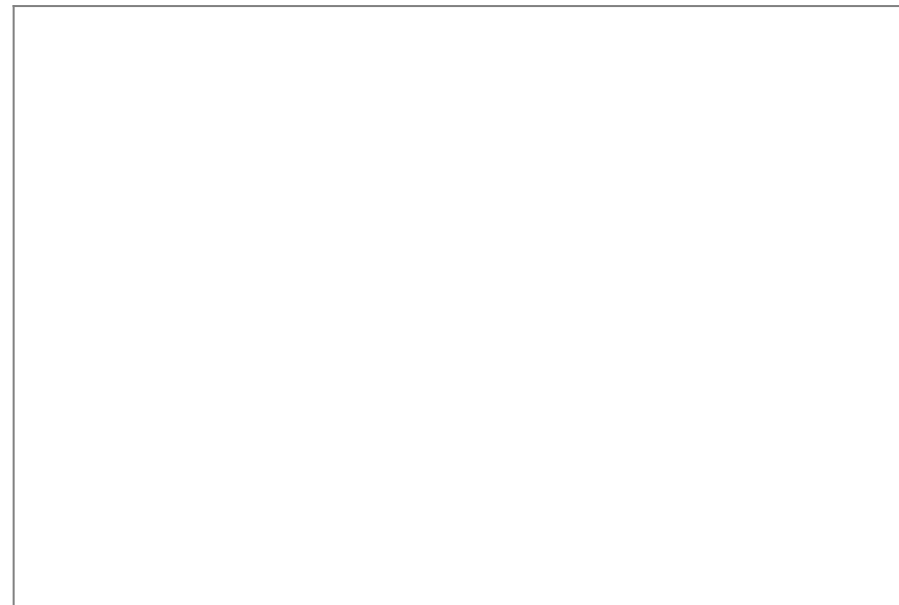




Floorplan

This floorplan is only for illustrative purposes and is not to scale. Measurements of rooms, doors, windows, and any items are approximate and no responsibility is taken for any error, omission or mis-statement. Some of items such as bathroom suites are representations only and may not look like the real items. Made with Made Snappy 360.

This fully renovated semi-detached bungalow in a quiet cul-de-sac on the outskirts of Dalton. With two double bedrooms, a modern 4-piece bathroom, and a spacious kitchen extension featuring bi-folding doors to a low-maintenance garden, the home is stylishly finished throughout. Additional highlights include a generous lounge with a multi-fuel stove, built-in kitchen appliances, gas central heating, double glazing, driveway parking, and an EV charging point. Perfect for those seeking a contemporary, move-in ready home in a peaceful location.



Visit us at
www.pooletownsend.co.uk
enquiries@pooletownsend.co.uk

We are open
 Monday – Friday 9.00 – 5.00
 Saturday 9.00 – 1.00

Barrow 01229 811811
 Ulverston 01229 588111
 Grange 015395 33316
 Kendal 01539 734455
 Milnthorpe 015395 62044