

## Rotherhithe Street, SE16

£375,000

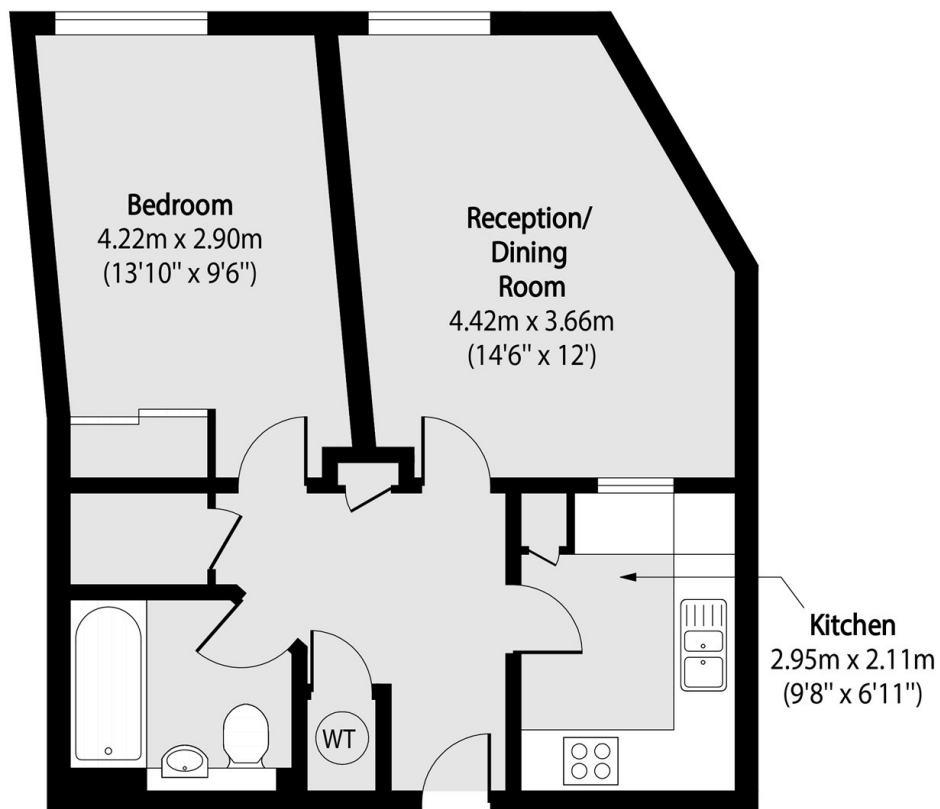
Situated within this extremely sought after Grade II listed waterfront warehouse conversion, this first floor one double bedroom flat is immaculately presented and boasts many features, such as high ceilings & lots of exposed brickwork. The historic building also offers concierge, gym, swimming and spa facilities.

Globe Wharf, set along the Thames Path, is just 0.6 miles from Rotherhithe and 0.8 miles from Canada Water stations, with excellent bus & ferry links. A wide range of shops, cafés, riverside pubs and restaurants are close by.

### Features

- One Double Bedroom Flat
- Excellent Condition
- Period Features
- Concierge, Gym & Pool/Spa
- Riverside Development

# Rotherhithe Street, London, SE16



Total area (approx): 48.87 sq m (526 sq. ft)