



Low Road, Queen Adelaide Ely CB7 4UQ

welcome to

Low Road, Queen Adelaide Ely

A detached home situated in a rural location offering well proportioned accommodation throughout providing scope for updating and improvement throughout - no onward chain.

Entrance Hall

With radiator, stairs to first floor and doors to:

Living Room

With two radiators, large feature fireplace and sliding patio doors to:

Conservatory

With radiator, power points, lights, double glazed windows to three sides and double doors to covered patio area.

Dining Room

With radiator, double glazed window to rear aspect and door to:

Kitchen

With a fitted range of base units and drawers with work surfaces over to three sides, matching wall units, breakfast bar, inset sink and drainer unit, built in eye level double oven, separate hob with extractor over, radiator, double glazed window to rear aspect and door to:

Rear Hall

With radiator, storage cupboard, door to garden and doors to:

W.C.

With low level w.c, radiator, window to rear.

Utility Room

With base units and drawers, inset sink and drainer unit, spaces for appliances, radiator, window to front.

Cloakroom/W.C.

Fitted with a suite comprising low level w.c, vanity wash hand basin, radiator and window to front.





First Floor Landing

With radiator, window to front aspect and doors to:

Bedroom One

With radiator, fitted wardrobes, windows to rear and side aspects, large walk in wardrobe and door to:

En-Suite Shower Room

Fitted with a suite comprising shower enclosure, low level w.c, vanity wash hand basin, towel ladder radiator and window to front.

Bedroom Two

With radiator, fitted wardrobes and window to rear aspect.

Bedroom Three

With radiator, fitted wardrobes and window to front aspect.

Bathroom

Fitted with a five piece suite comprising panel enclosed bath, shower enclosure, bidet, low level w.c, wash hand basin, towel ladder radiator and window to rear.

Double Garage Outside

There is a long gated driveway that leads to the property and double garage. The extensive gardens wrap around the property.



view this property online williamhbrown.co.uk/Property/ELY110083



welcome to

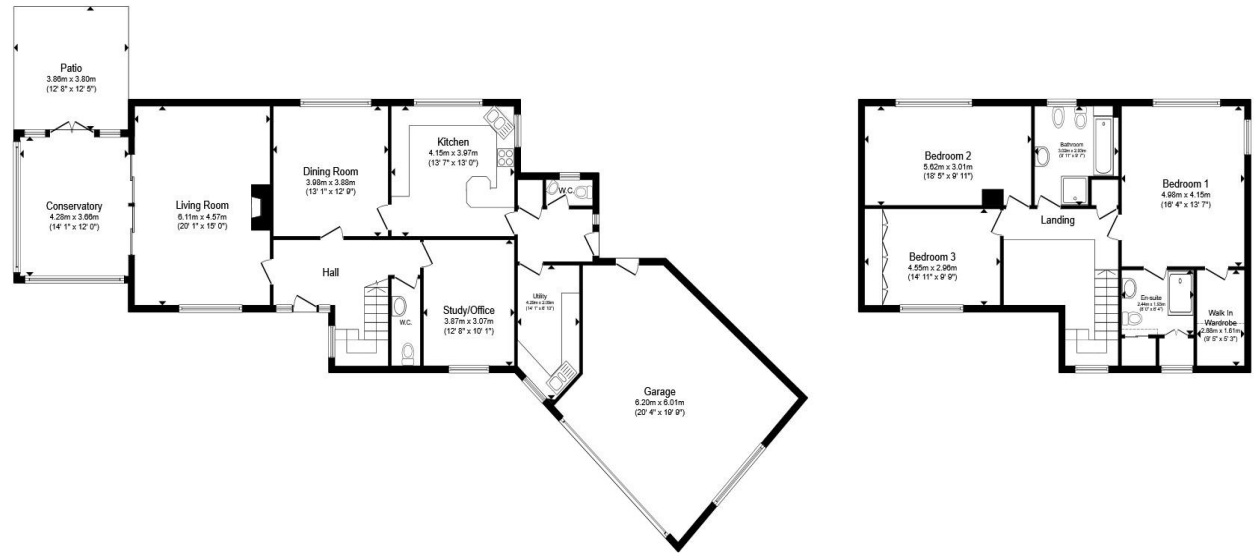
Low Road, Queen Adelaide Ely

- No Onward Chain
- Detached Family Home
- Approx 2695 sq. ft.
- Four Reception Rooms
- Three Double Bedrooms

Tenure: Freehold EPC Rating: D
Council Tax Band: F

guide price

£375,000



Ground Floor

First Floor

Total floor area 250.4 m² (2,695 sq.ft.) approx

This floor plan is for illustrative purposes only. It is not drawn to scale. Any measurements, floor areas (including any total floor area), openings and orientation are approximate. No details are guaranteed, they cannot be relied upon for any purpose and they do not form part of any agreement. No liability is taken for any error, omission or misstatement. A party must rely upon its own inspection(s). Powered by www.propertybox.io



view this property online williamhbrown.co.uk/Property/ELY110083



Property Ref:
ELY110083 - 0002

1. MONEY LAUNDERING REGULATIONS Intending purchasers will be asked to produce identification documentation at a later stage and we would ask for your co-operation in order that there is no delay in agreeing the sale. 2. These particulars do not constitute part or all of an offer or contract. 3. The measurements indicated are supplied for guidance only and as such must be considered incorrect. Potential buyers are advised to recheck measurements before committing to any expense. 4. We have not tested any apparatus, equipment, fixtures or services and it is in the buyers interest to check the working condition of any appliances. 5. Where an EPC, or a Home Report (Scotland only) is held for this property, it is available for inspection at the branch by appointment. If you require a printed version of a Home Report, you will need to pay a reasonable production charge reflecting printing and other costs. 6. We are not able to offer an opinion either written or verbal on the content of these reports and this must be obtained from your legal representative. 7. Whilst we take care in preparing these reports, a buyer should ensure that his/her legal representative confirms as soon as possible all matters relating to title including the extent and boundaries of the property and other important matters before exchange of contracts.

William H Brown is a trading name of Sequence (UK) Limited which is registered in England and Wales under company number 4268443, Registered Office is Cumbria House, 16-20 Hockliffe Street, Leighton Buzzard, Bedfordshire, LU7 1GN. VAT Registration Number is 500 2481 05.

william h brown



01353 663311



ely@williamhbrown.co.uk



6 Forehill, ELY, Cambridgeshire, CB7 4AF



williamhbrown.co.uk