

FLETCHERS

ESTATE AGENTS



Wolverton Gardens, W6

£700,000

An excellently presented, two bedroom, two bathroom, modern apartment situated within a highly sort-after development in the heart of Brook Green. Positioned on the first floor of the building, this stylish apartment has been finished to a high specification. The flat has a Juliette balcony in the reception room allowing an abundance of natural light as well as a large open-plan kitchen/living area complete with integrated appliances perfect for entertaining.

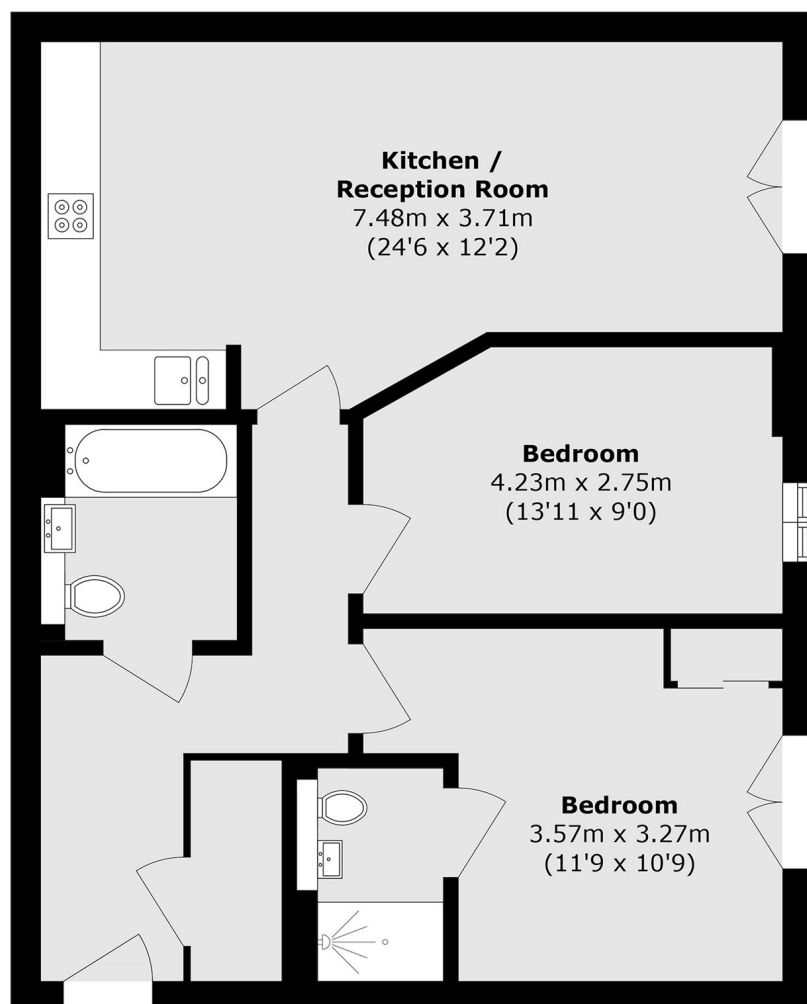
The flat is offered with a long lease, no onward chain and the building benefits from having lift access and cycle storage, a CCTV monitored entrance and access to both a well-maintained communal garden and roof terrace.

In the heart of Brook Green, the property is well-located for its array of eclectic groceries and independent restaurants and a short walk from the green itself. The property is also under a mile from the popular Westfield Shopping Centre. Goldhawk Road and Hammersmith Tube Stations are also under a mile away offering excellent connections in and out of the city.

• Two Double Bedrooms • Modern Development • Open-Plan Living • Lift-Access • Long Lease • Heart of Brook Green •

FLETCHERS

ESTATE AGENTS



Total area (approx.): 70.9 sq. m (763.1 sq. ft)

Fletchers Brook Green Sales
144 Shepherds Bush Road, Hammersmith, London, W6 7PB
020 7603 1415
brookgreensales@fletcherestates.com

Energy Rating: A. We aim to make our particulars both accurate and reliable. However they are not guaranteed; nor do they form part of an offer or contract. If you require clarification on any points then please contact us, especially if you're traveling some distance to view. Please note that appliances and heating systems have not been tested and therefore no warranties can be given as to their good working order.