



Garlands Road, Redhill

£1,275 Per Month





“

“This property was my first home that I owned on my own and I have loved living here. Not only is it a stone’s throw from Redhill station but I can also walk into Reigate High Street within 20 minutes. The flat is deceptively spacious inside and I have enjoyed entertaining family and friends in the open kitchen-living area. One of my favorite things about the property is the patio area directly out the front of the flat where I love to sit and enjoy a glass of wine whilst watching the sunset behind the trees.”

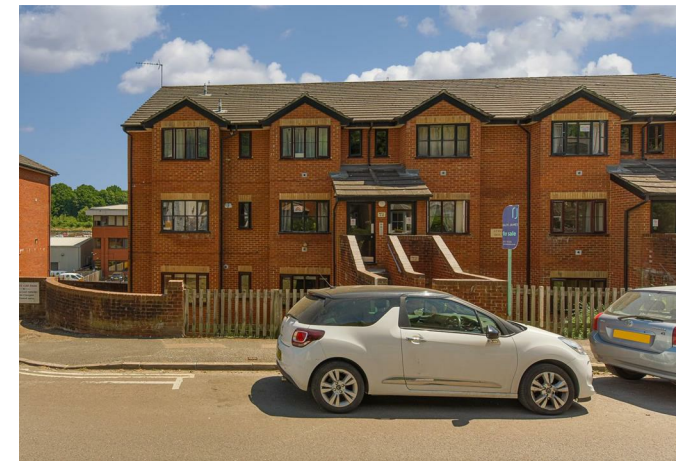
”



Just a short walk from town, this spacious one-bedroom elevated ground floor flat is beautifully renovated and modernised throughout. The light décor and large windows brighten the space on offer and allows natural light to flow through.

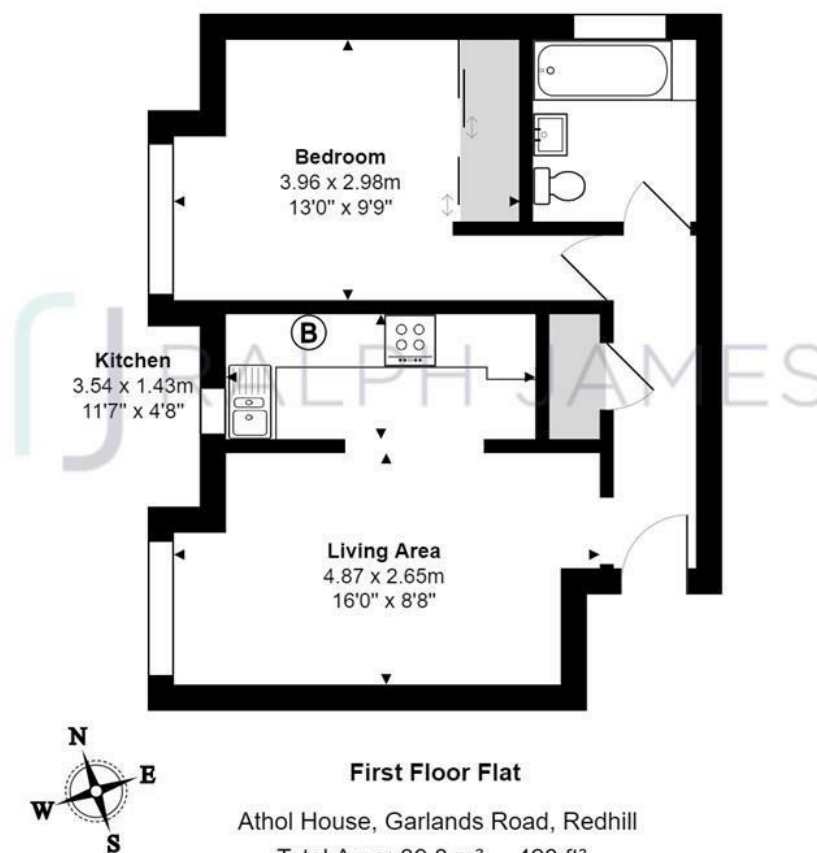
The living room and kitchen flow together through an open archway so you are able to keep an eye on dinner or chat to your guests as you prep. The modern fitted kitchen has been designed to make the most of the space, the white gloss cupboards lighten up the room along with the metro tiled splash back that contrasts nicely with the dark slate flooring and wooden counter-top. The built-in wine rack means you can keep bottles stored away, ready for any celebration! Sitting at the dining table tucked away in the corner you can enjoy your dinner before heading over to the sofa with a good book and a hot drink to unwind before bed.

The large double bedroom at the end of the hallway is a great size. The built in wardrobes provide lots of room for storage and the bay window could offer space for a decent sized chest of drawers or even a stylish vanity unit with the windows providing you with natural lighting.



Need to know

- Lovely one bed
- Modern inside
- Double bedroom
- Cracking location
- Allocated parking
- Plenty of storage
- Redhill centre
- Open plan
- EPC: C
- Council tax: C



Interested?

redhill@ralphjames.co.uk
01737 765 555

1

ralphjames.co.uk

Whilst every attempt has been made to ensure the accuracy of the floor plan shown, all measurements, positioning, fixtures, features, fittings and any other data shown are an approximate interpretation for illustrative purposes only and are not to scale.

No responsibility is taken for any error, omission, miss-statement or use of data shown.

The above statement applies to both 'Still Moving London LTD' and the Company or individual displaying this floor plan.

Unauthorised reproduction prohibited.

© Still Moving London LTD (www.stillmoving.london)

RALPH JAMES