

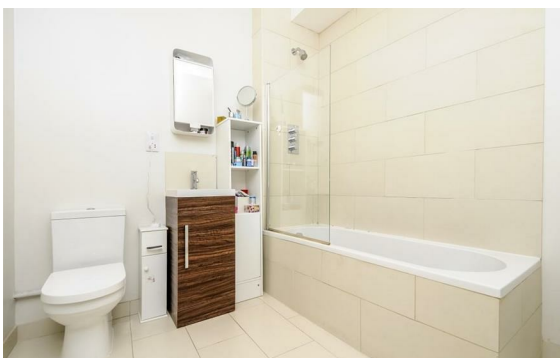


Baker Street, Marylebone, London, NW1

Rent £805 Per Month

2 Bed | 1 Bath | 1 Reception

Please call us on 020 7724 2233 or email us info@newingtonstates.com to book a viewing.



The property features lovely kitchen with a spacious living room providing ample room for both relaxing and entertaining. Both bedrooms are equally sized doubles with excellent storage, making the apartment ideal for sharers or professionals.

Ideally located in Marylebone, just moments from Baker Street Station and within easy reach of Marylebone Station. The property is also close to London Business School and the open green spaces of Regent's Park, with a wide range of shops, cafés, and restaurants nearby, as well as easy access to Oxford Street and Mayfair.

EPC rating: E

Energy Efficiency Rating: E

Agents Note: Whilst every care has been taken to prepare these particulars, they are for guidance purposes only. All measurements are approximate and are for general guidance purposes only and whilst every care has been taken to ensure their accuracy, they should not be relied upon and potential buyers/tenants are advised to recheck the measurements.

NEWINGTON
— ESTATES —

60 Upper Montagu Street

London

W1H 1SN

020 7724 2233

info@newingtonstates.com

<http://www.newingtonstates.com>