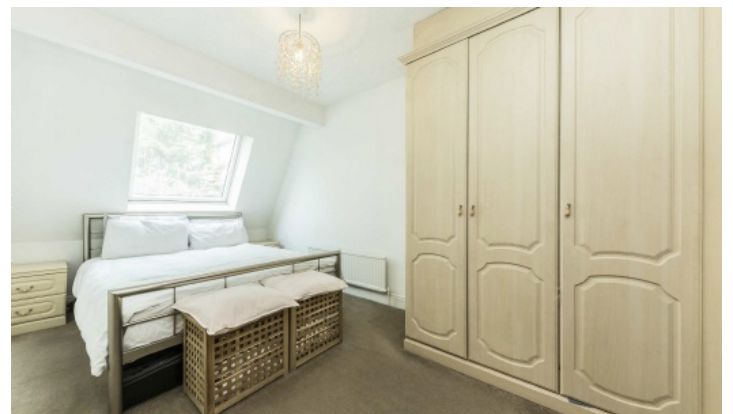


FLETCHERS

ESTATE AGENTS



White Swan Mews, W4

£849,950

A charming three bedroom mews house within a secure gated development. The house has a great entertaining space with separate kitchen and potential to extend into the secluded private garden. There is a garage included as well as an off street parking space.

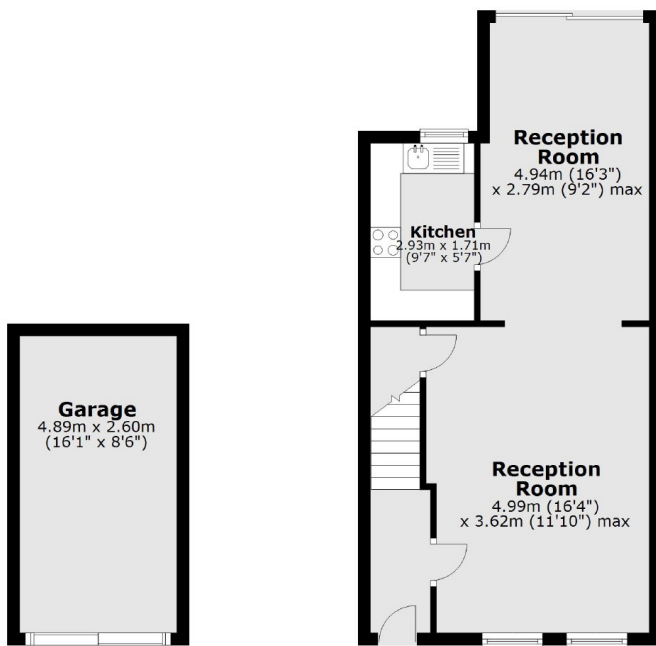
White Swan Mews is tucked away just south of the popular Glebe Estate part of Chiswick, within easy reach of the Chiswick High Road and Turnham Green terrace. Also withing a short walk is the Thames and Chiswick House.

- Three Bedrooms • Freehold House • Gated Development • Garage • Off Street Parking • Private Garden •

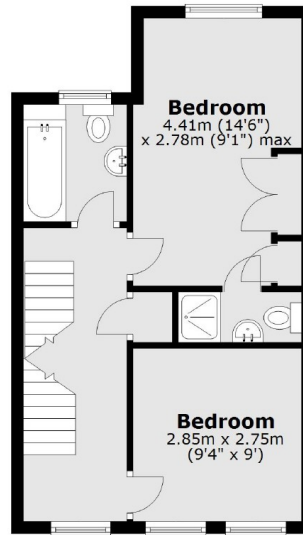
FLETCHERS

ESTATE AGENTS

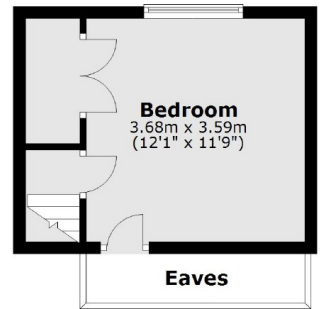
Ground Floor



First Floor



Second Floor



Main area: Approx. 94.5 sq. metres (1017.6 sq. feet)
Plus garages, approx. 12.7 sq. metres (136.9 sq. feet)

Fletchers Chiswick Turnham Green Sales
58 Turnham Green Terrace, London, W4 1QP
020 8987 3000
chiswicksales@fletcherestates.com

Energy Rating: C. We aim to make our particulars both accurate and reliable. However they are not guaranteed; nor do they form part of an offer or contract. If you require clarification on any points then please contact us, especially if you're traveling some distance to view. Please note that appliances and heating systems have not been tested and therefore no warranties can be given as to their good working order.