



Bulwer Street, W12

£450,000

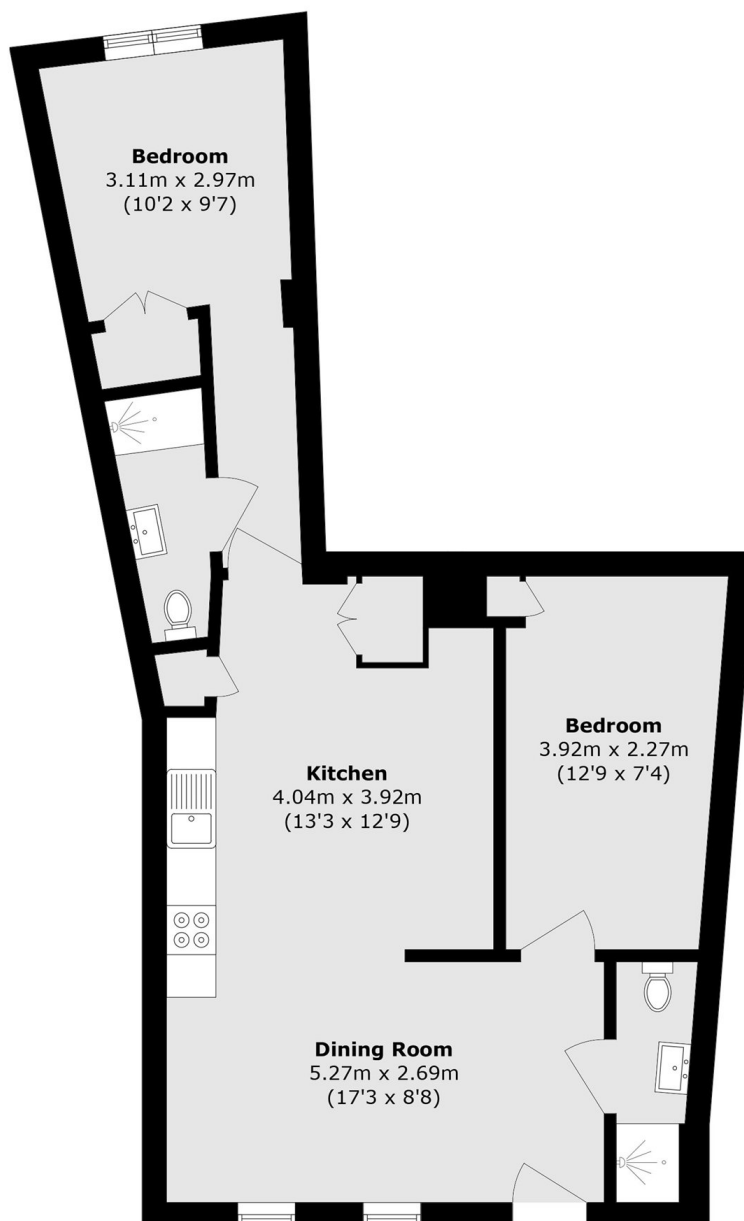
Situated in the heart of Shepherd's Bush, this two-bedroom flat offers bright and versatile living accommodation. The property comprises two bedrooms, one of which benefits from a skylight, two bathrooms and offered with no onward chain.

An excellent location just moments from Westfield London, offering superb shopping, dining, and transport connections on your doorstep.

Features

- Long Lease
- First Floor
- Two Bathrooms
- No Onward Chain
- Westfields Shopping Centre
- Shepherds Bush Station

Bulwer Street, London, W12



Total area (approx.): 66.2 sq. m (712.6 sq. ft)