



COUNTRY
HOLMES

Glossop Road, Charlesworth

Offers Over £350,000

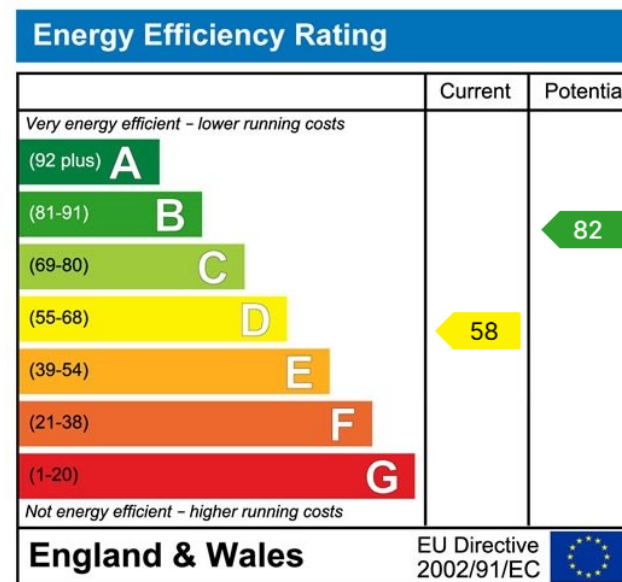
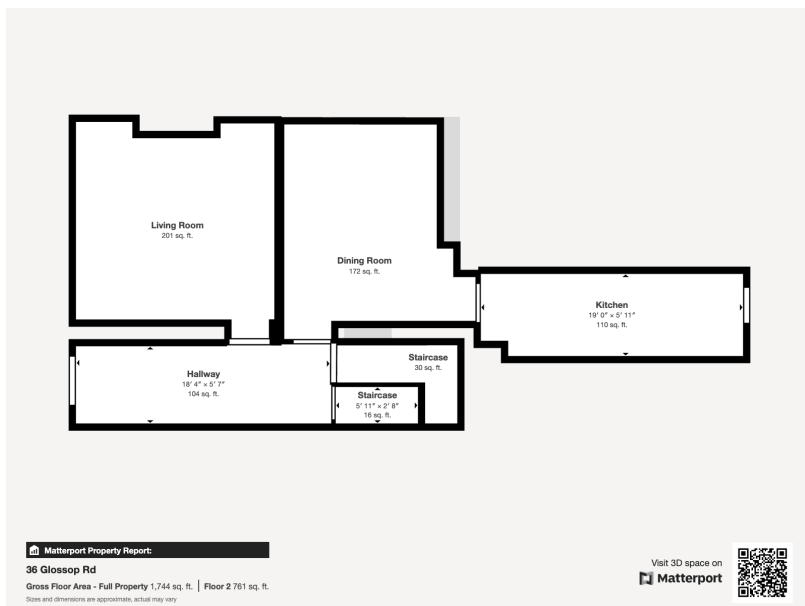
🛏 3 🚿 1 🚗 2



- Immaculate Semi-Detached Period Cottage
- Two Reception Rooms
- Three Sizeable Bedrooms - Two King Sized
- Cellar With Vaulted Ceiling and Stone Slab Shelves
- Sought After Location of Charlesworth
- Period Features and Shutter Blinds Throughout
- Countryside Views



This charming stone-built semi-detached home in the heart of Charlesworth offers character-filled accommodation with stunning countryside views. Featuring original period details, a cosy lounge with log burner, separate dining room, and a modern 18 ft galley kitchen, the property also boasts three bedrooms and a stylish four-piece bathroom. With a raised front garden and a central village location, it's an ideal family home. Early viewing is highly recommended.



01457 761310 | glossop@countryholmes.co.uk | www.countryholmes.co.uk
 18 High Street West, Glossop, Derbyshire, SK13 8BH