

Parfrey Street, W6

£800,000

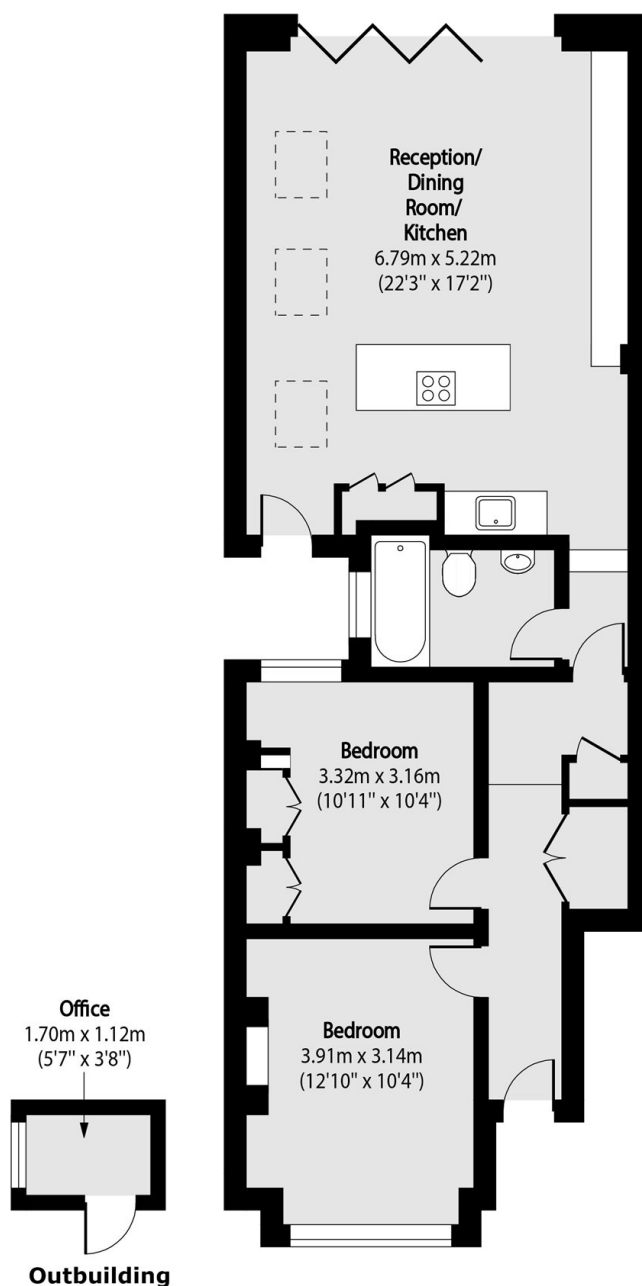
This immaculate two bedroom, garden flat has been renovated to a very high standard, benefitting from its own front door and open plan kitchen/living space. Bi-folding doors lead out to the private garden with separate garden office pod, ideal for those that work from home. The property is located in the Crabtree Conservation Area moments from the River.

Parfrey Street is ideally located for the river as well as the shops and cafe's on Fulham Palace Road. Transport links are within a short walk at Hammersmith Broadway and Barons Court.

Features

- Two Bedrooms
- One Bathroom
- Private Garden
- Open Plan
- Share of Freehold
- River Thames

Parfrey Street, London, W6



Total area (approx): 74.28 sq m (799 sq. ft)

Outbuilding area (approx): 1.87 sq m (20 sq. ft)