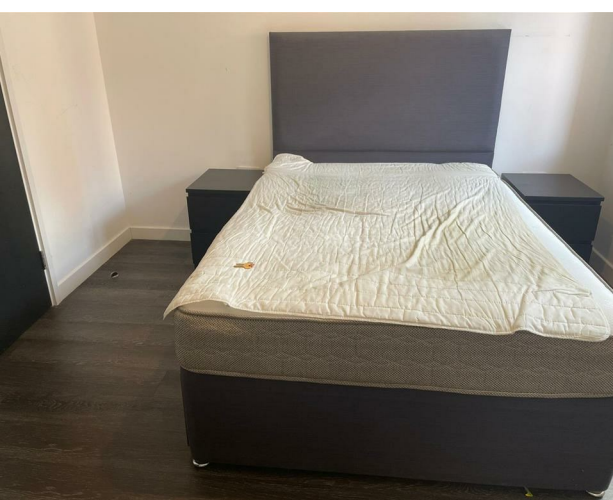
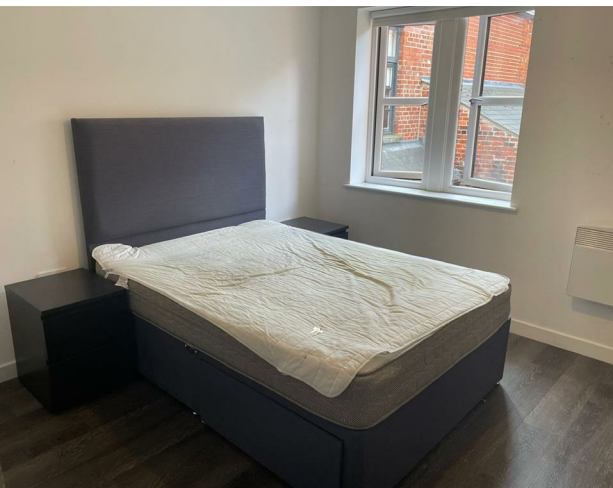


Flat 3, 20A Hyde Terrace, Leeds, LS2 9LN
£3,250 Per month

V&L
PROPERTIES



Flat 3, 20A Hyde Terrace, Leeds, LS2 9LN

£3,250 Per month

Council Tax Band:

Nestled in the vibrant area of Hyde Terrace, Leeds, this modern student accommodation offers an exceptional living experience. Built in 2017, this contemporary house spans an impressive 1,463 square feet and is designed to cater specifically to the needs of students.

The property boasts six well-appointed bedrooms, each featuring its own ensuite bathroom, ensuring privacy and convenience for all residents. The shared kitchen and communal area provide a welcoming space for socialising and cooking, fostering a sense of community among housemates.

Location is key, and this property does not disappoint. It is ideally situated just a three-minute walk from Leeds Dental School, five minutes from Leeds Medical University, and a mere nine minutes from the Leeds General Infirmary. This prime positioning makes it an excellent choice for students pursuing their studies in these esteemed institutions.





22 Regent Street
 Leeds
 LS2 7QA
 01133 225737
info@vgl-properties.co.uk
vgl-properties.co.uk

Energy Efficiency Rating		Current	Potential
<i>Very energy efficient - lower running costs</i>			
(92 plus) A			
(81-91) B			
(69-80) C		75	
(55-68) D			
(39-54) E			
(21-38) F			
(1-20) G			
<i>Not energy efficient - higher running costs</i>			
England & Wales		EU Directive 2002/91/EC 