

first for homes

first for property in life - [firstforhomes.co.uk](https://www.firstforhomes.co.uk)

Contact Allan England's Team

01592 752 944



Main Road, East Wemyss

Offers over £94,995

Main Road, East Wemyss

We Are Delighted To Present This Lovely 2-bed 1st Floor Apartment Situated Within Desirable Village of East Wemyss!

Allan England's award winning team at first for homes are proud to welcome to the market this well-presented 2 bed 1st floor floor Apartment situated within the Village of East Wemyss. The property forms an ideal first-time purchase offering move-in condition living accommodation comprising: entrance hall, Inviting lounge with space for table and chairs, modern kitchen, 2 bedrooms and modern shower room. Small shared courtyard to rear. Street parking. New Worcester boiler Sept 2024. Early viewing is essential to ensure you don't miss out!

HOME REPORT VALUE £100,000

EPC RATING - C

COUNCIL TAX BAND - A

Call first for homes - first for trust... first for service... first for aftercare!



SITUATION - East Wemyss is situated near the mouth of the River Leven on the Firth of Forth. The Town lies approximately 8 miles East of Glenrothes and 5 miles of Kirkcaldy and has local shopping areas, schooling and recreational facilities including golf courses and leisure facilities available in the nearby Leven. The A955 links the Town to Kirkcaldy which in turn links with the A92 to Dunfermline and Edinburgh.

INFORMATION - These particulars are prepared on the basis of information provided by our clients. We have not tested the electrical system or appliances, nor where applicable, any central heating system. All sizes are recorded by electronic tape measurements to give an indicative, approximate size only. Prospective purchasers should make their own enquiries - no warranty is given or implied. This schedule is not intended to, and does not form any contract.



SITUATION – East Wemyss

ENTRANCE HALL

LOUNGE 14'2" x 13'3" approx. (4.34m x 4.06m approx.)

KITCHEN 8'7" x 8'3" approx. (2.63m x 2.54m approx.)

BEDROOM 1

14'9" x 11'9" (approx.) (4.52m x 3.60m (approx.))

BEDROOM 2

12'0" x 7'4" approx. (3.66m x 2.26m approx.)

SHOWER ROOM

SMALL CHIPPED GARDEN AREA TO REAR

STREET PARKING

INFORMATION



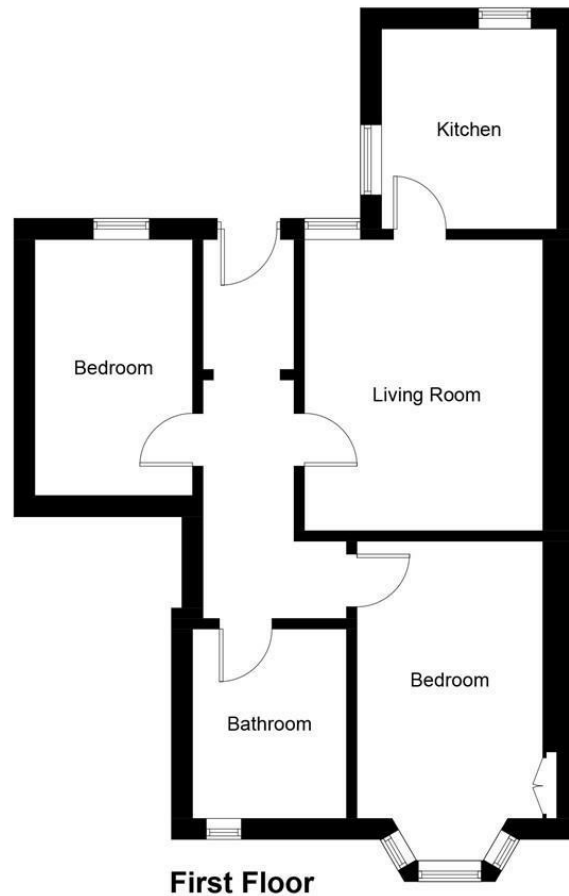


Illustration for identification purposes only, measurements are approximate, not to scale. Fourlabs.co © (ID1283594)

Information

These particulars are prepared on the basis of information provided by our clients. We have not tested the electrical system or any electrical appliances, nor where applicable, any central heating system. All sizes are recorded by electronic tape measurement to give an indicative, approximate size only. Prospective purchasers should make their own enquiries – no warranty is given or implied. This schedule is not intended to, and does not form any contract.

FREE Valuation

Selling Your Home?

Choose first for homes - a highly experienced estate agency team you can trust to sell your home at the highest possible price. Offering fantastic savings on selling fees, with no compromise on service, free professional photography highlighting your home in its best light, first for homes will be your first choice. Contact us today to arrange your appointment.



first for trust



first for service



first for aftercare

first for homes
first for property in life - firstforhomes.co.uk

Contact Allan England's Team
01592 752 944

32 North Street, Glenrothes, Fife KY7 5NA
Fax: 01592 807947
sales@firstforhomes.co.uk
www.firstforhomes.co.uk