

Lightowler Close Cherry Burton Beverley HU17 7FR

£635,000

🛏️ 4 🍽️ 2 🚗 3



REFERENCE BA0665 This is a stunning family detached home built by Peter Ward homes in about 2020 and subsequently upgraded by my clients. The property occupies a good size plot within this small and select development in this highly desirable village and offers well planned and very well proportioned family space throughout. The ground floor offers a spacious Reception area, cloakroom, study/music room, a wonderful lounge which overlooks and gives access to the private rear garden and undoubtedly the live in kitchen/dining room will provide a very pleasant space for the whole family. In addition there is a utility and cloak room. The first floor offers four double bedrooms with the Master having en suite shower room and dressing room and a family bathroom off the landing. The rear garden is not overlooked, has an Oak framed Gazebo and 8person hot-tub. The double garage accommodates two vehicles as does the driveway and there is an E.V point and solar panels

- Small Exclusive Development
- Very Good Energy Efficiency (B)
- Two Reception Rooms
- Utility room
- Ensuite/Dressing Room/Family Bathroom
- Generously Proportioned Rooms Throughout
- Solar Panels
- Fantastic Family live in Kitchen/Dining Room
- Four double Bedrooms
- Private Garden



3 Lightowler Close, HU17

Approximate Gross Internal Floor Area = 180.2 sq m / 1940 sq ft

Garage Area = 30.0 sq m / 324 sq ft

Total Area = 210.2 sq m / 2264 sq ft

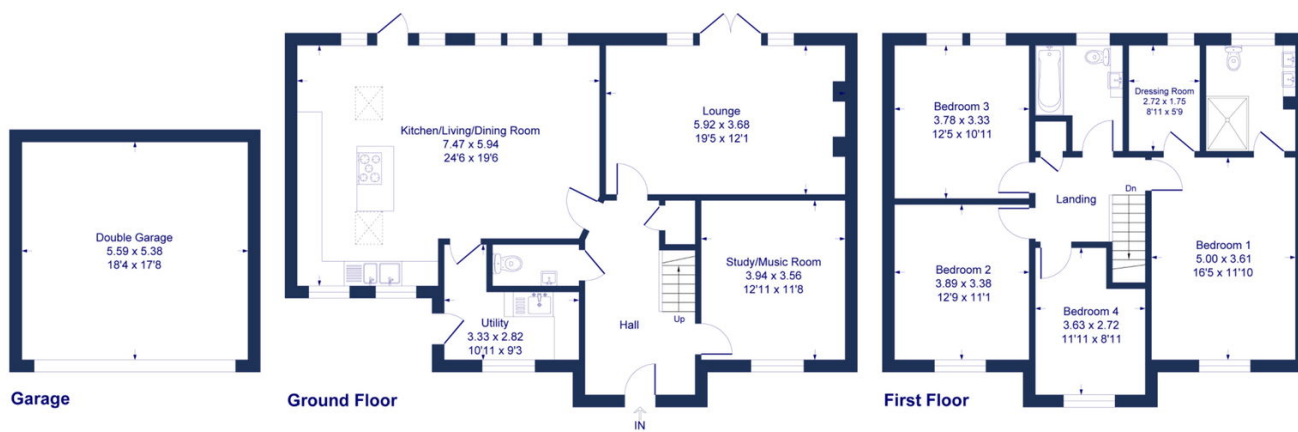


Illustration for identification purposes only, measurements are approximate, not to scale.