



## Weymouth Street, W1G

£1,395,000

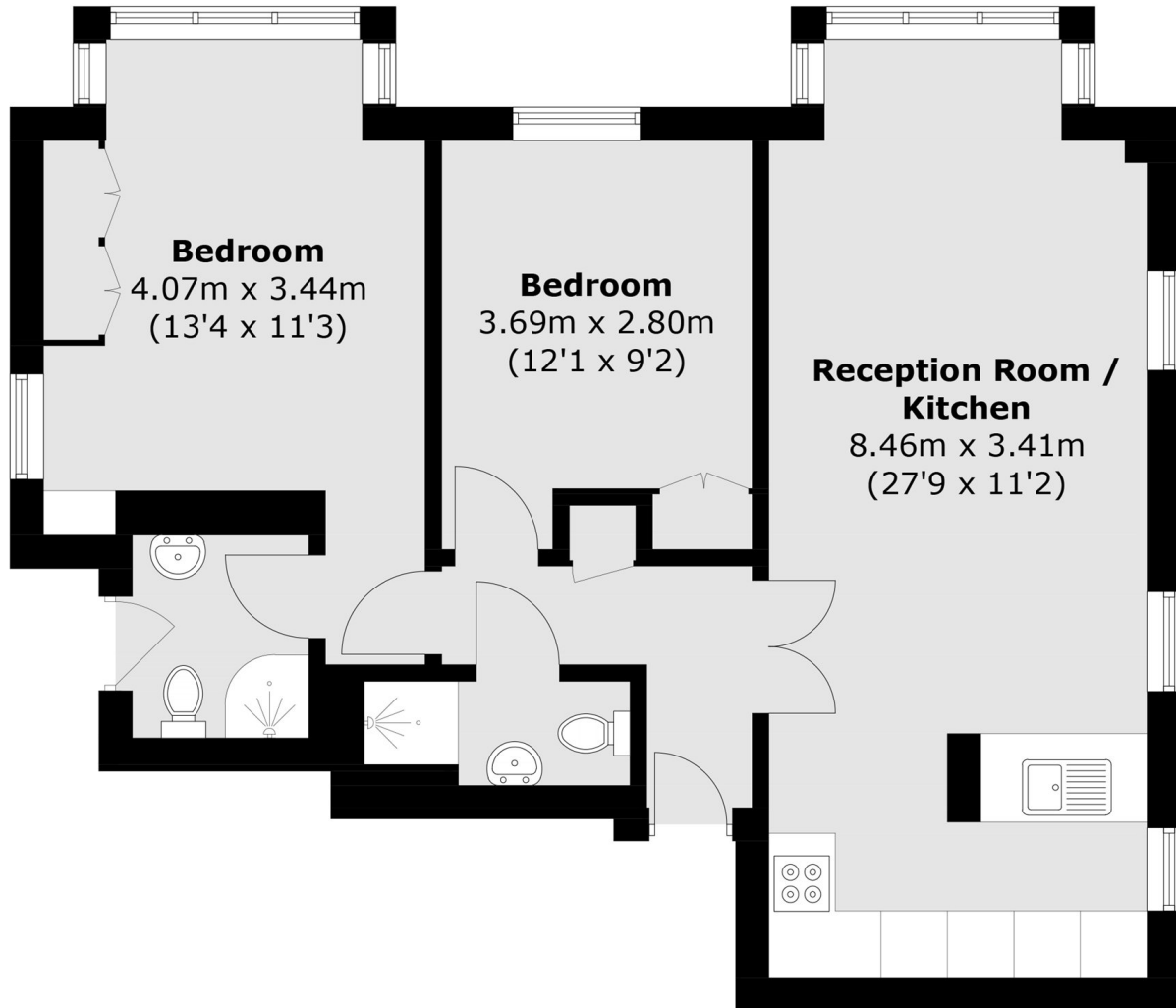
This two bedroom, two bathroom flat, located in the heart of Marylebone Village boasts generous proportions in all rooms whilst benefitting from wood flooring and contemporary furnishing. With no onward chain and great running costs, this property would make an ideal Buy-to-Let or second home.

Moments away from the many shops and amenities of Marylebone High Street and benefits from numerous transport links from Baker Street, Marylebone, Bond Street, Oxford Circus and Great Portland Street stations.

### Features

- Two Bedrooms
- Two Bathrooms
- No Onward Chain
- Lift Access
- Second Floor
- Marylebone Village
- Open Plan Kitchen/Living Room

# Weymouth Street, London, W1G



## Third Floor

Total area (approx.): 65.4 sq. m (703.9 sq. ft)