



Campkin Gardens, St. Leonards-On-Sea TN37 7FD

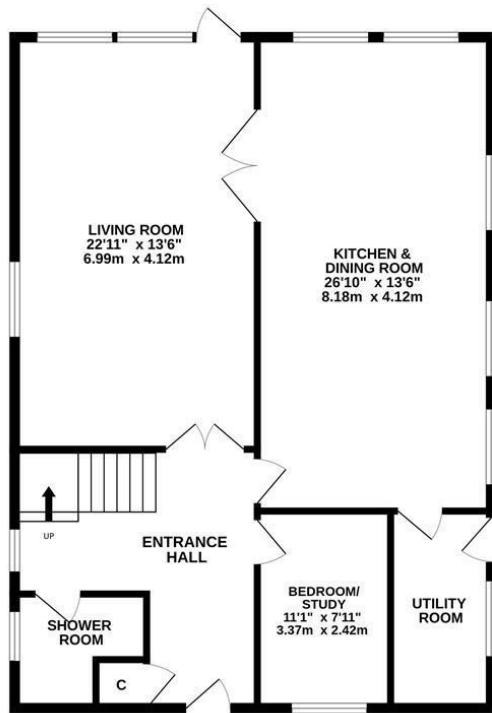
Offers in excess of £700,000



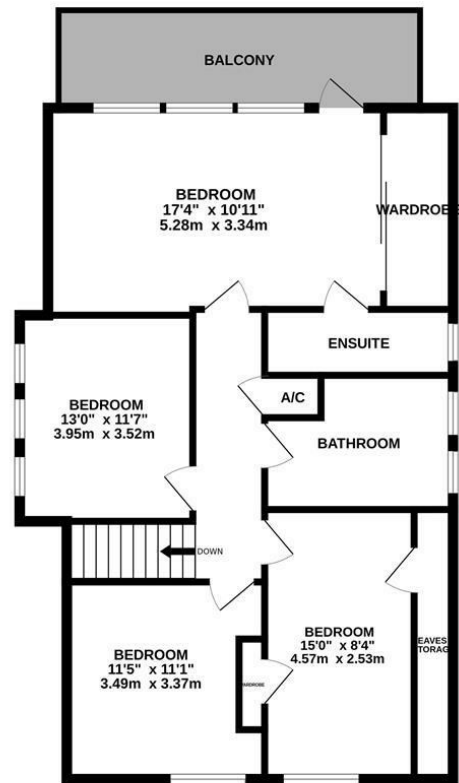
A deceptively spacious four/five bedroom detached family home with a DETACHED DOUBLE GARAGE situated within a small gated community on the Northern outskirts of St. Leonards, within easy reach of the Historic Town of Battle. Battle provides a collection of local independent shops, excellent schooling, traditional country pubs and a mainline railway station with connections to London. There are also a variety of supermarkets a short drive away.

This attractive property is a SCANDIA-HUS DESIGN featuring superior levels of insulation and triple glazing throughout with the added benefit of SOLAR PANELS, making it extremely energy efficient. The accommodation spans two well thought-out floors offering IMPRESSIVE PROPORTIONS and large windows which allow the natural light to stream through. You enter in to a large, welcoming entrance hallway with a downstairs cloakroom and shower room. There is a generous, DUAL ASPECT

GROUND FLOOR



1ST FLOOR



Whilst every attempt has been made to ensure the accuracy of the floorplan contained here, measurements of doors, windows, rooms and any other items are approximate and no responsibility is taken for any error, omission or mis-statement. This plan is for illustrative purposes only and should be used as such by any prospective purchaser. The services, systems and appliances shown have not been tested and no guarantee as to their operability or efficiency can be given.
Made with Metropix ©2025

