

**Guide price £700,000**

**FREEHOLD**

**Smythes Green, Essex, CO5**

**Bedrooms : 5**

**Bathrooms : 3**

**Reception Rooms : 1**

**CHAIN FREE**

**EXCLUSIVE DEVELOPMENT**

**10 YEAR BUILDING  
WARRANTY**

**5 BEDROOMS**

**THREE BATHROOMS**

**ARRANGED OVER THREE  
FLOORS**

**Ramsey Moore**  
294 Heathway, Dagenham, Essex, RM10 8LU  
dagenham@ramseymoore.co.uk | 02085366600  
Website: <https://www.ramseymoore.co.uk/>



**CHAIN FREE.**

GUIDE PRICE £700,00 - £750,000

**Ramsey Moore are privileged to offer for sale this bespoke exclusive development of only Three 5 bed detached houses.**

**Each property has been finished to such a high standard and come included with a 10 year building warranty.**

**Are you looking for a rural but vibrant location? The developers have not held back on these plots! They are set back from the main road in a quiet cul - de - sac location offering peace and quiet to you and your family! these really are the houses that keep on giving! If you are hoping for privacy, the rear gardens (Soon to be landscaped) are reaching 70ft (Approx) and are unoverlooked providing peace and quiet all year round.**

**Having been cleverly thought out these houses provide large living accommodation set out over three floors, with each floor having bathroom facilities and other fantastic quirks.**

**Wait until you see the open plan kitchen/diner, with a island all the family will be able to enjoy and a view not to be taken for granted.**

**These properties can be the commuters dream, located within 10 minutes to Kelvedon Railway Station providing easy access into London Liverpool street and surrounding areas.**

**Call our sales team today to get your exclusive internal viewing on one of these outstanding family homes.**

#### **Entrance**

Entrance via multi lock composite door leading to hallway

#### **Entrance Hallway**

Doors to all rooms, Underfloor heating, Wood laminate flooring and Stairs to first floor

#### **Reception** 4.70m x 3.18m (15.42ft x 10.43ft)

Double glazed UPVC window to front and side aspect, Spotlights, Various socket points, Underfloor heating and carpet laid.

#### **Kitchen / Diner** 7.40m x 6.40m (24.28ft x 21.00ft)

Double glazed UPVC windows to rear and side aspect, Byfold doors to rear aspect, x3 Chandelier pendants, Kitchen island with marble work surfaces, Sink with mixer & Reginox Hot and cold filtered tap, X2 integrated electric ovens, integrated Fridge & Freezer, Integrated Dishwasher, Integrated washing machine, Matching eye and base level units with marble work tops over, Slim line electric hob with Extractor over, Underfloor heating, Tiled splash back, Tiled flooring and entrance to utility room.

#### **Bedroom One** 4.18m x 3.17m (13.71ft x 10.40ft)

Double Glazed UPVC window to rear aspect, Wall mounted radiator, Various socket points, Carpet laid and entrance door to wardrobe and En suite.

#### **En suite** 2.38m x 2.15m (7.81ft x 7.05ft)

Double glazed window to side aspect, Low level WC, Wash hand basin with mixer taps, Glass surround shower, Wall mounted mirror with vanity unit, Wall mounted towel rail and tiled flooring.

#### **Bedroom Two** 3.29m x 3.18m (10.79ft x 10.43ft)

Double glazed UPVC window to rear aspect, Wall mounted radiator, Various socket points and carpet laid.

#### **Bedroom Three** 4.13m x 3.27m (13.55ft x 10.73ft)

Double glazed UPVC window to front aspect, Various socket points, Wall mounted radiator and carpet laid.

#### **Family Bathroom** 2.25m x 1.86m (7.38ft x 6.10ft)

Spotlights, Double glazed windows to rear aspect, L shaped bath with x2 shower attachments over, Glass surround, Low level WC, Wash hand basin, Vanity unit (Built In), Wall mounted mirror, Wall towel rail and tiles laid.

**Bedroom 4** *7.90m x 3.77m (25.92ft x 12.37ft)*

x2 Velux windows to side aspect, x1 Double glazed window to rear aspect, X2 wall mounted radiators, Spotlights, Various socket points and carpet laid.

**Bedroom 5 / Office** *2.87m x 3.06m (9.42ft x 10.04ft)*

UPVC Double glazed window to rear aspect, Spotlights, Various socket points, Wall mounted radiator and wood laminate flooring

**Shower room** *1.40m x 2.01m (4.59ft x 6.59ft)*

Velux window to side aspect, Spotlights, Marble effect tiled splash back, Low level WC, Wash hand basin, Glass surround shower cubicle with rainforest shower attachments and tiled flooring

**Rear Garden**

Soon to be landscaped

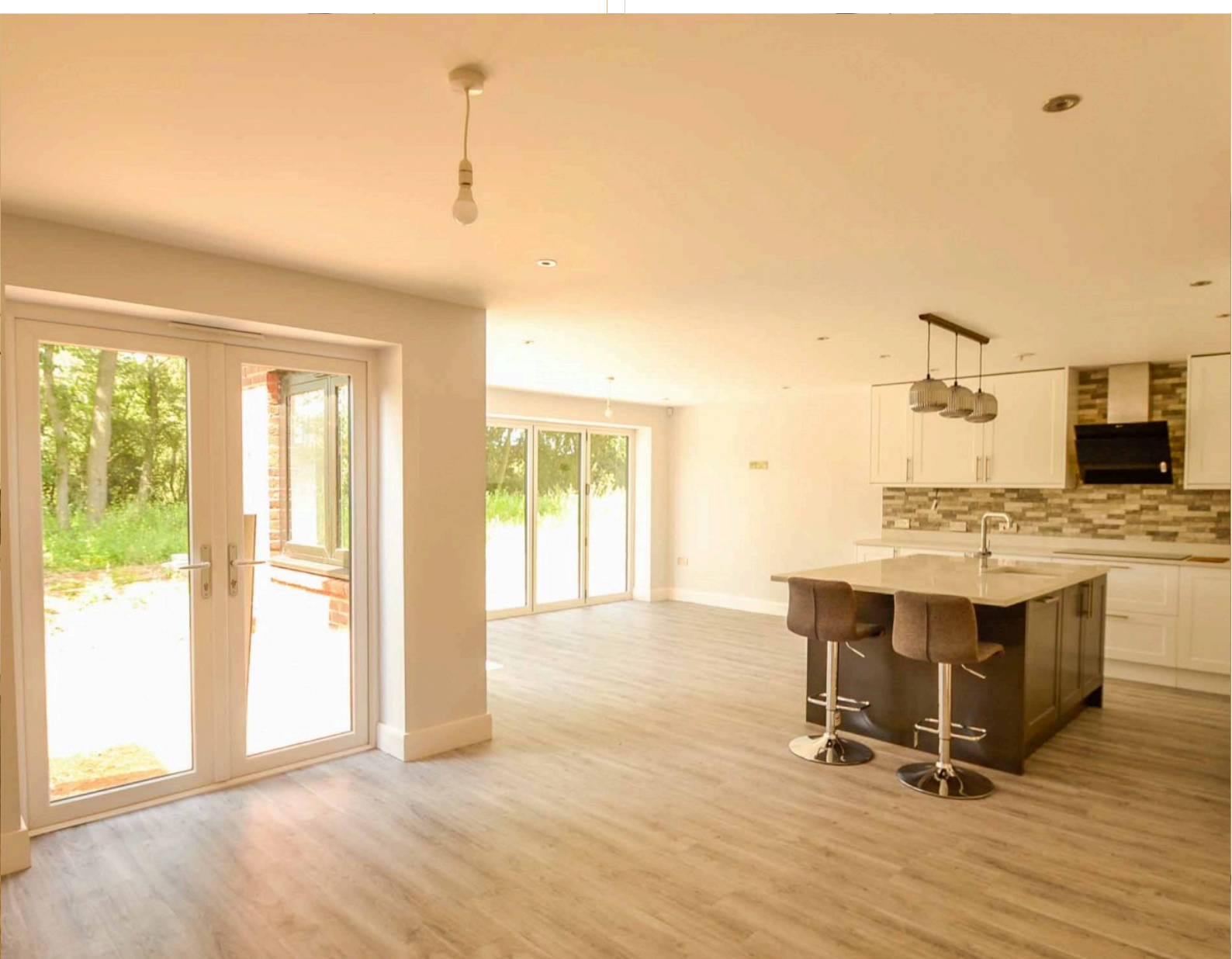
**Ramsey Moore**

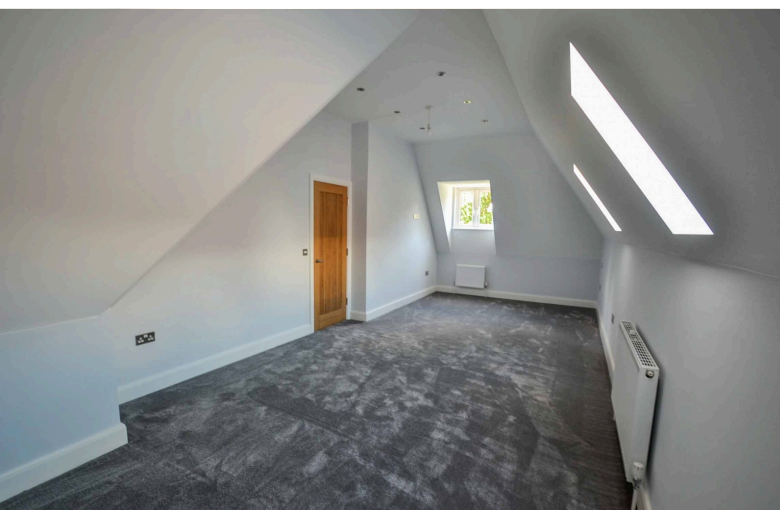
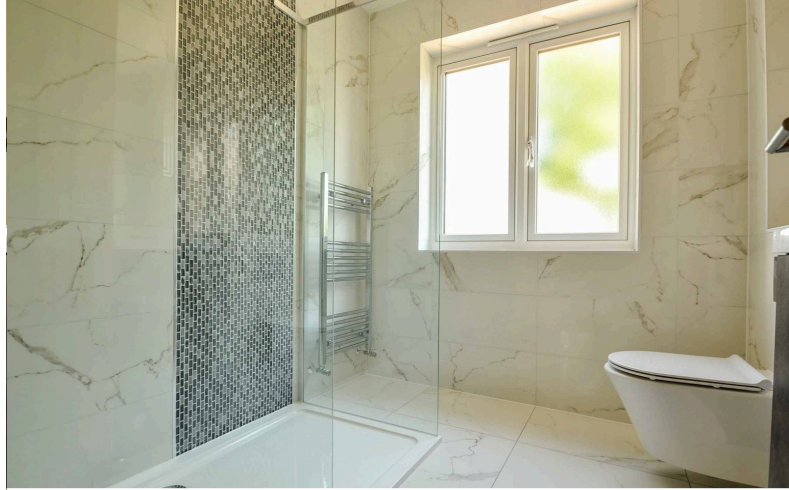
294 Heathway, Dagenham, Essex, RM10 8LU

**dagenham@ramseymoore.co.uk | 02085366600**

Website: <https://www.ramseymoore.co.uk/>







**Ramsey Moore**  
294 Heathway, Dagenham, Essex, RM10 8LU  
[dagenham@ramseymoore.co.uk](mailto:dagenham@ramseymoore.co.uk) | 02085366600  
Website: <https://www.ramseymoore.co.uk/>



