



Walker Point Way

£125,000

- Well Presented Modern Apartment
- Allocated Parking
- Open Plan Lounge/Kitchen
- One Double Bedroom
- Close to Local Amenities
- EPC Rating: B



Pinkmove

01633 746088
team@pinkmove.co.uk



About the property

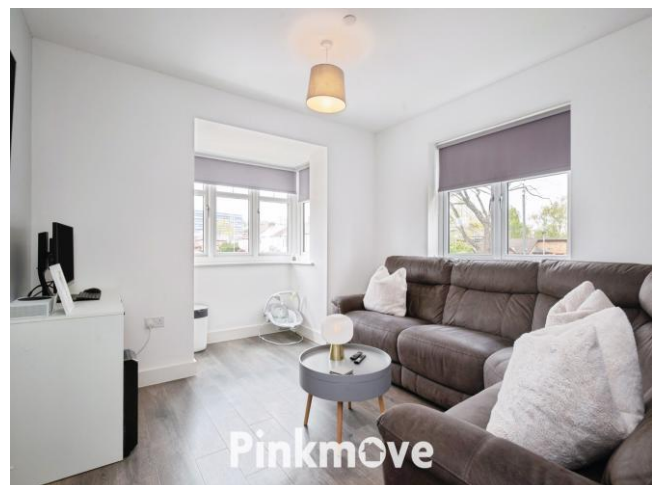
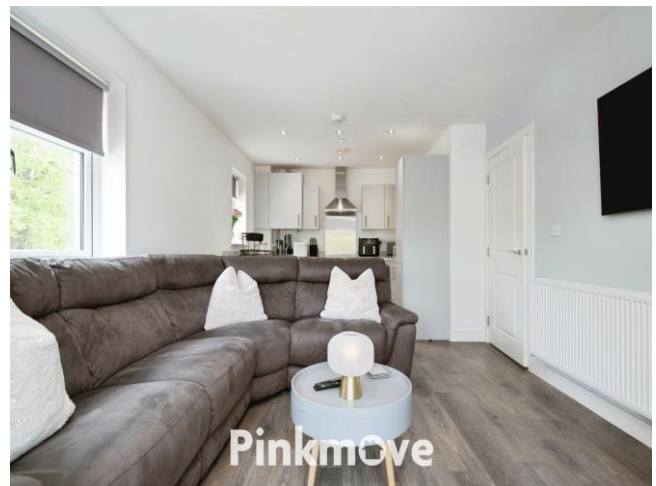
Discover your perfect urban retreat in this stylish one-bedroom apartment, where contemporary design meets everyday convenience.

The open-plan living area seamlessly unites lounge and kitchen, creating a bright, social space that's perfect for unwinding after work or entertaining friends. Sleek cabinetry, integrated appliances, and generous worktops ensure cooking feels effortless and the airy layout makes every gathering feel relaxed and welcoming.

When it's time to rest, retreat to the spacious double bedroom, flooded with natural light and offering a serene haven for a great night's sleep. The fully tiled, modern bathroom adds a touch of luxury with its clean lines and premium fixtures—no detail has been overlooked.

Located just minutes from Newport's vibrant city centre, this home boasts easy access to shops, cafes, and transport links, making every commute and weekend adventure stress-free. You'll also benefit from top-rated schools and local amenities right on your doorstep.

An allocated parking space completes this exceptional package—a true rarity in city living. Whether you're buying your first home or expanding your investment portfolio, this turnkey apartment is ready to impress. Don't miss out—make it yours today!





Accommodation

Hall

Lounge / Kitchen

9' 7" x 19' 6" (2.92m x 5.94m)

Bedroom

13' 1" x 12' 4" (3.99m x 3.76m)

Max Measurements

Bathroom

7' 2" x 5' 2" (2.18m x 1.57m)

Max Measurements

01633 746088

team@pinkmove.co.uk

Pinkmove

Floorplan



Total floor area 48.3 sq.m. (520 sq.ft.) approx

This floor plan is for illustrative purposes only. It is not drawn to scale. Any measurements, floor areas (including any total floor area), openings and orientation are approximate. No details are guaranteed, they cannot be relied upon for any purpose and they do not form part of any agreement. No liability is taken for any error, omission or misstatement. A party must rely upon its own inspection(s). Powered by www.localagent.com

Pinkmove

Important Information

Note while we endeavour to make our sales details accurate and reliable, if there is any point which is of particular interest to you, please contact the office and we will be pleased to confirm the position for you. We have not personally tested any apparatus, equipment, fixtures, fittings or services and cannot verify they are in working order or fit for their purposes. Nothing in these particulars is intended to indicate that carpets or curtains, furnishings or fittings, electrical goods (whether wired or not). Gas fires or light fittings or any other fixtures not expressly included form part of the property offered for sale. This computer generated Floorplan, if applicable, is intended as a general guide to the layout and design of the property. It is not to scale and should not be relied upon for dimensions. Tenure: We cannot confirm the tenure of the property as we have not had access to the legal documents. The buyer is advised to obtain verification from their solicitor or surveyor.

Peter Alan Limited is registered in England and Wales under company number 2073153, Registered Office is Cumbria House, 16-20 Hockliffe Street, Leighton Buzzard, Bedfordshire, LU7 1GN. VAT Registration Number is 500 2481 05. For activities relating to regulated mortgages and non-investment insurance contracts, Peter Alan Limited is an appointed representative of Connells Limited which is authorised and regulated by the Financial Conduct Authority. Connells Limited's Financial Services Register number is 302221. Most buy-to-let

